

# ***Hustler TrimStar 36" CE Parts Manual***



**HUSTLER®**  
.....

*Hustler Turf Equipment*

.....

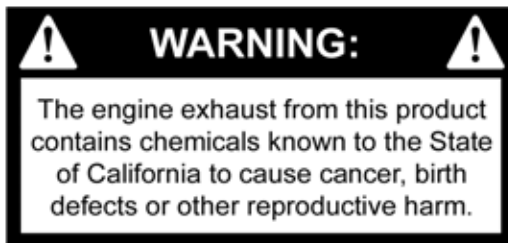
*P.O. Box 7000*

...

*Hesston, Kansas*

•

67062-2097



**NOTICE OF REQUIREMENT OF SPARK ARRESTER MUFFLER**

This equipment may create sparks that can start fires around dry vegetation. California Public Resources Code Section 4442.6 provides that it is unlawful to use or operate an internal combustion engine on any forest-covered, brush-covered, or grass-covered land unless the engine is equipped with a spark arrester maintained in effective working order. A spark arrester is a device constructed of nonflammable materials specifically for the purpose of removing and retaining carbon and other flammable particles over 0.0232 of an inch in size from the exhaust flow of an internal combustion engine that uses hydrocarbon fuels or which is qualified and rated by the United States Forest Service. Other states or federal areas may have similar laws. The Operator Should Contact Local Fire Agencies For Laws or Regulations Relating to Fire Prevention Requirements. **THIS EQUIPMENT DOES NOT HAVE A SPARK ARRESTER AND YOU SHOULD CONTACT YOUR AUTHORIZED DEALER FOR THE PURCHASE OF A SPARK ARRESTER.**

Inspect spark arrester daily; replace every 500 hours or as needed.

The Engine Owner's Manual provides information regarding the U.S. Environmental Protection Agency (EPA) and the California Emission Control Regulation of emission systems, maintenance and warranty.

Keep Engine Owner's Manual with your unit. Should the Engine Owner's Manual become damaged or illegible, replace immediately. Replacements may be ordered per the information found in the Product Information section of the owner's manual.

---

# Table of Contents

<b>Section 1</b>	
General Information . . . . .	1-1
<b>Section 2</b>	
36" Frame . . . . .	2-2
Frame Decals . . . . .	2-4
36" Hydraulic System . . . . .	2-6
<b>Section 3</b>	
36" Deck Lift . . . . .	3-2
36" Deck Mounting . . . . .	3-4
36" Cover . . . . .	3-6
<b>Section 4</b>	
Engine, 15HP KAW. . . . .	4-2
Fuel System . . . . .	4-4
Instrument Panel . . . . .	4-6
Throttle . . . . .	4-12
36" Brake . . . . .	4-14
<b>Section 5</b>	
36" Wheels & Tires . . . . .	5-2
Caster Wheel Breakdown . . . . .	5-4
Drive Wheel Breakdown . . . . .	5-5
<b>Section 6</b>	
36" Deck Decals . . . . .	6-2
36" Deck Pulleys & Spindles . . . . .	6-4
36" Deck . . . . .	6-6
Spindle Assembly—783506 . . . . .	6-8
Index . . . . .	i-1



# Section 1

## General Information

This Manual covers TrimStar model **929232CE**

## Frequently Ordered Parts

<b>PART NO.</b>	<b>DESCRIPTION</b>
601838	PUMP DRIVE BELT, A 58.5" EL
601786	DECK BELT, A 89.50 EL
794214	BLADE,20.50"-MUL-F-CW
794206	BLADE,13.75"-MUL-F-CW
068478	IN-LINE FUEL FILTER
797852	KAWASAKI KAI AIR FILTER PRECLEANER
797860	KAWASAKI KAI AIR FILTER CARTRIDGE
772079	ENGINE OIL FILTER

---

## Service Literature

<b>PART NO.</b>	<b>DESCRIPTION</b>
111251CE	TRIMSTAR OWNER'S MANUAL
797787	KAWASAKI KAI 15HP ENGINE MANUAL

---

*Note:* When ordering parts, you must use the part number as shown for each part, not the index number. Always give the model and serial number to your parts and service representative.

*Note:* Items sold in bulk such as seals and hoses are sold by the foot.

<b>PART NO.</b>	<b>DESCRIPTION</b>
033001	FLEXIBLE TRIM
787713	HOSE, 0.50" LOW PRESSURE
015818	FUEL LINE

---

## Using this manual

*Illustrations used were current at the time of printing, but subsequent production changes may cause your machine to vary slightly in detail. Excel Industries, Inc. reserves the right to redesign and change the machine as deemed necessary, without notification. If a change has been made to your machine which is not reflected in this parts manual, see your Hustler dealer for current information and parts.*

## Options Available From Your Dealer

<b>PART NO.</b>	<b>DESCRIPTION</b>
107654	36" TRIMSTAR HYDRO MULCH KIT
600900	BLADE, F13.75"-L-F-CW
600901	BLADE, F20.50"-L-F-CW
102125	ROLL-ON STRIPING SULKY
929299	TRIMSTAR SIDE CATCHER
111478	KIT, 36/42 ADAPTER
602689	TIRE/WHEEL 18 X 6.50-8 KNOB

## Hardware Description Codes & Abbreviations

The following codes are used throughout this parts manual. Refer to this list when ordering parts.

<b>ABBREVIATION</b>	<b>DESCRIPTION</b>	<b>ABBREVIATION</b>	<b>DESCRIPTION</b>
CB	CARRIAGE BOLT	MB	MACHINE BUSHING
CE	CLEVIS PIN	MS	MACHINE SCREW
CP	COTTER PIN	NT	NUT
CS	CAP SCREW	SC	SELF TAPPING CAP SCREW
CW	CUP WASHER	SH	SOCKET HEAD
FDRW	FENDER WASHER	SB	SHOULDER BOLT
FW	FLAT WASHER	SS	SET SCREW
HX	HEX HEAD	OD	OUTSIDE DIAMETER
LW	LOCK WASHER	ID	INSIDE DIAMETER

## Standard Torques

The following chart lists the standard torque values for the threaded fasteners found in this manual. Torque all cap screws, nuts and set screws to these values unless a different torque is shown in the Notes section next to the fastener.

<b>SIZE</b>	<b>FT-LBS</b>	<b>NM</b>	<b>SIZE</b>	<b>FT-LBS</b>	<b>NM</b>
.250	8.2	11.1	M3	1	1.3
.312	17	23	M4	2.2	3
.375	30	40	M5	4.5	6.1
.438	48	65	M6	7.7	10.4
.500	73	99	M8	18.5	25
.562	105	143	M10	37	50
.625	145	200	M12	64	87
.750	260	350	M14	80	108.5
.875	420	565	M16	160	215
1.00	625	850	M20	320	435
			M24	555	750

### **NOTE:**

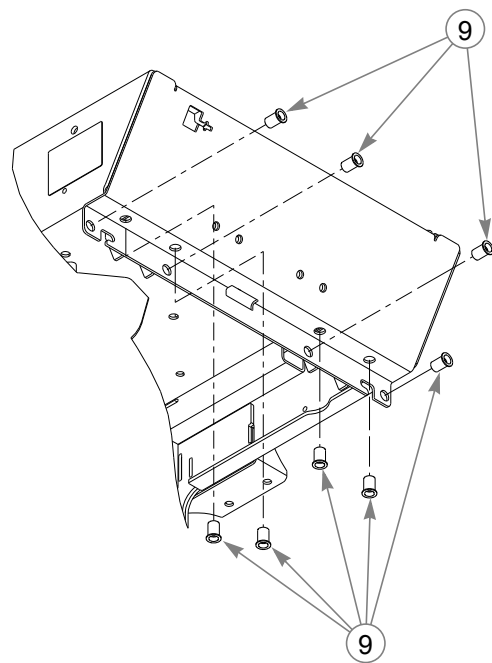
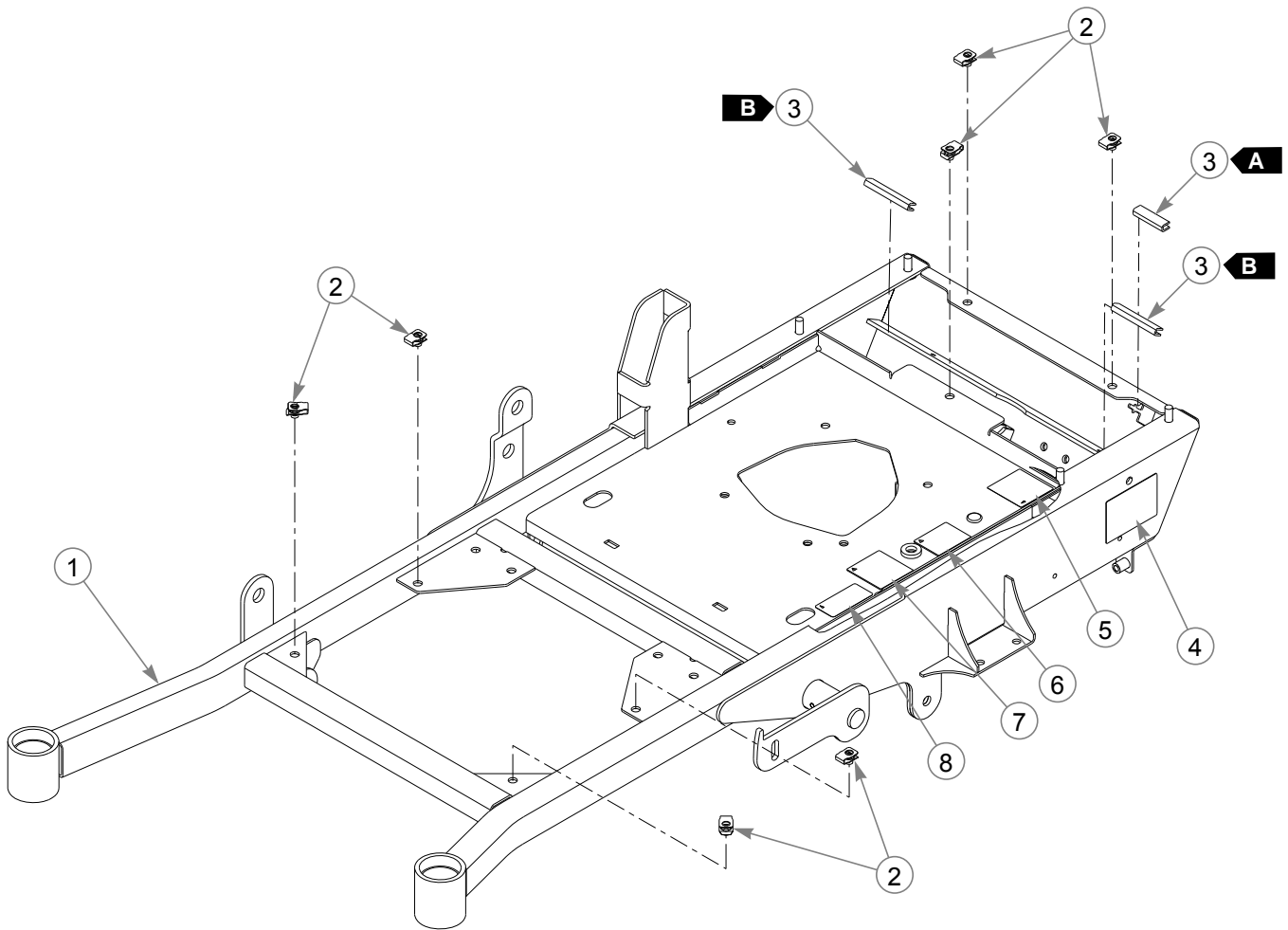
**Loctite® 592 to be used on all pipe threads.  
Lubricate all grease zerks.**

---

## Section 2

36" Frame .....	2-2
Frame Decals .....	2-4
36" Hydraulic System .....	2-6

# 36" Frame



---



## **36" & 48" Frame**

INDEX NO.	PART NO.	QTY.	DESCRIPTION
1	551093	1	36" FRAME (WITH DECALS & HARDWARE)
	551094	1	48" FRAME (WITH DECALS & HARDWARE)
2	601069	7	CN .312-18 X .200 MAX THK
3	033001	21 CM	TRIM
4	N/A	1	TURF PRODUCTS SERIAL NO. PLATE
5	797647	1	BELT ROUTING DECAL
6	776310	1	CE MARK DECAL
7	794834CE	1	CE 100 DBA LIMIT DECAL
8	602041	1	HOT DECAL
9	808485	8	RIVET NUT, 5/16-18 THREAD

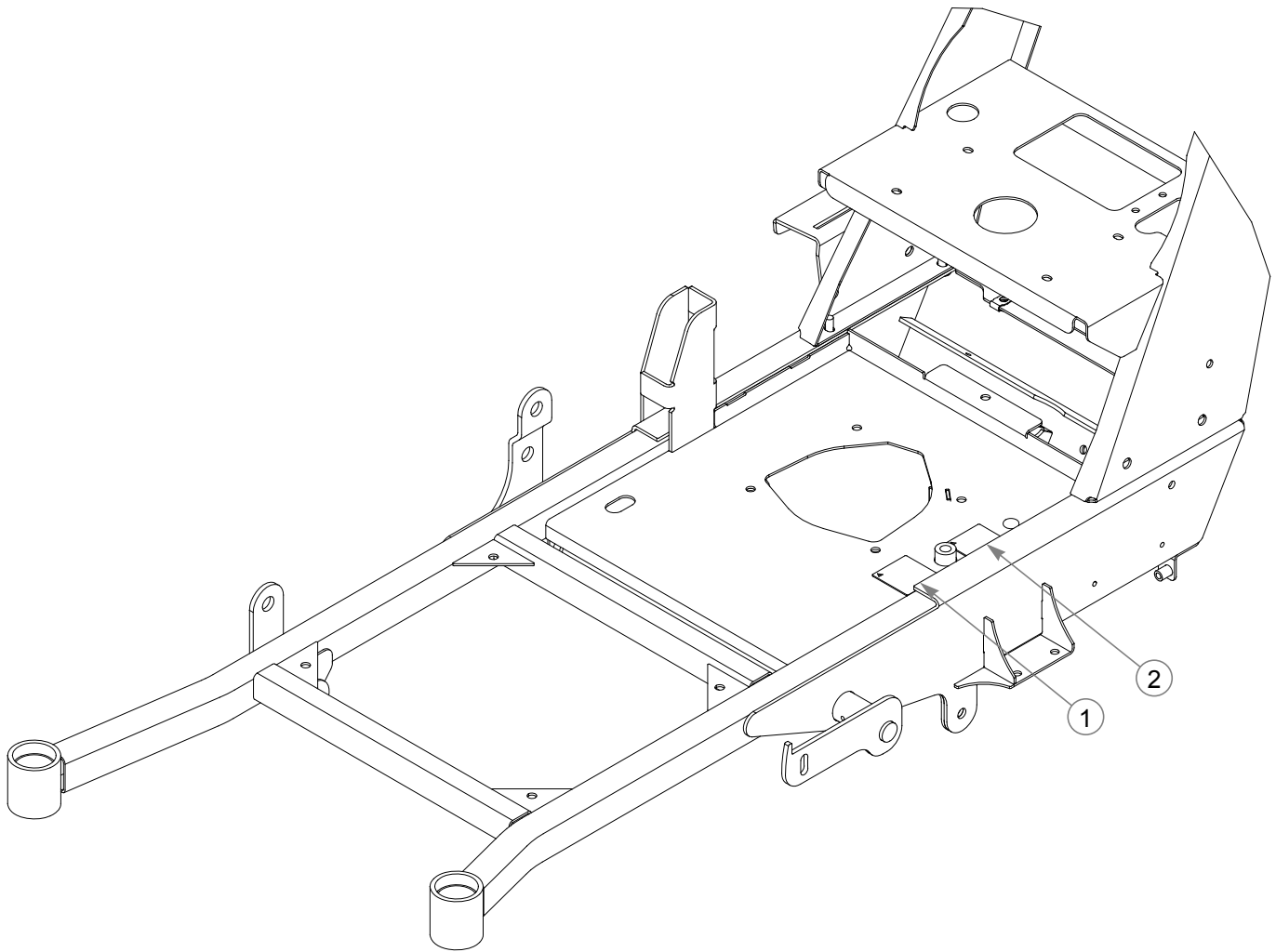
---

### **NOTES:**

1. In the event the serial number tag becomes damaged or illegible, please contact your dealer to order a replacement.

TRIM LENGTHS	
<b>A</b> 	5 CM
<b>B</b> 	8 CM

# Frame Decals



---

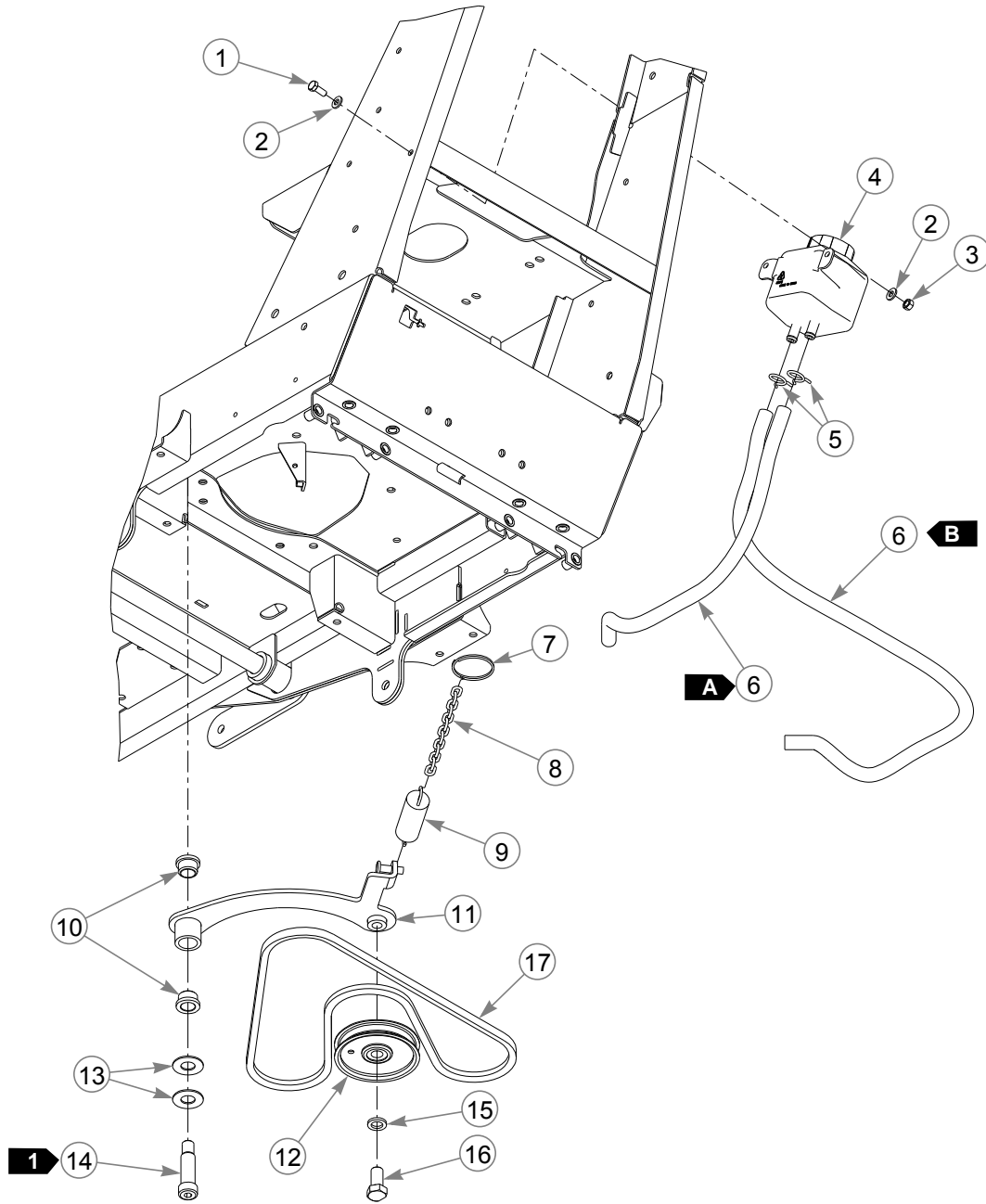
## **Frame Decals**

INDEX NO.	PART NO.	QTY.	DESCRIPTION
1	794834CE	1	100 DBA LIMIT CE DECAL
2	776310	1	CE MARK DECAL

---

### **NOTES:**

# 36" Hydraulic System



# 36" Hydraulic System

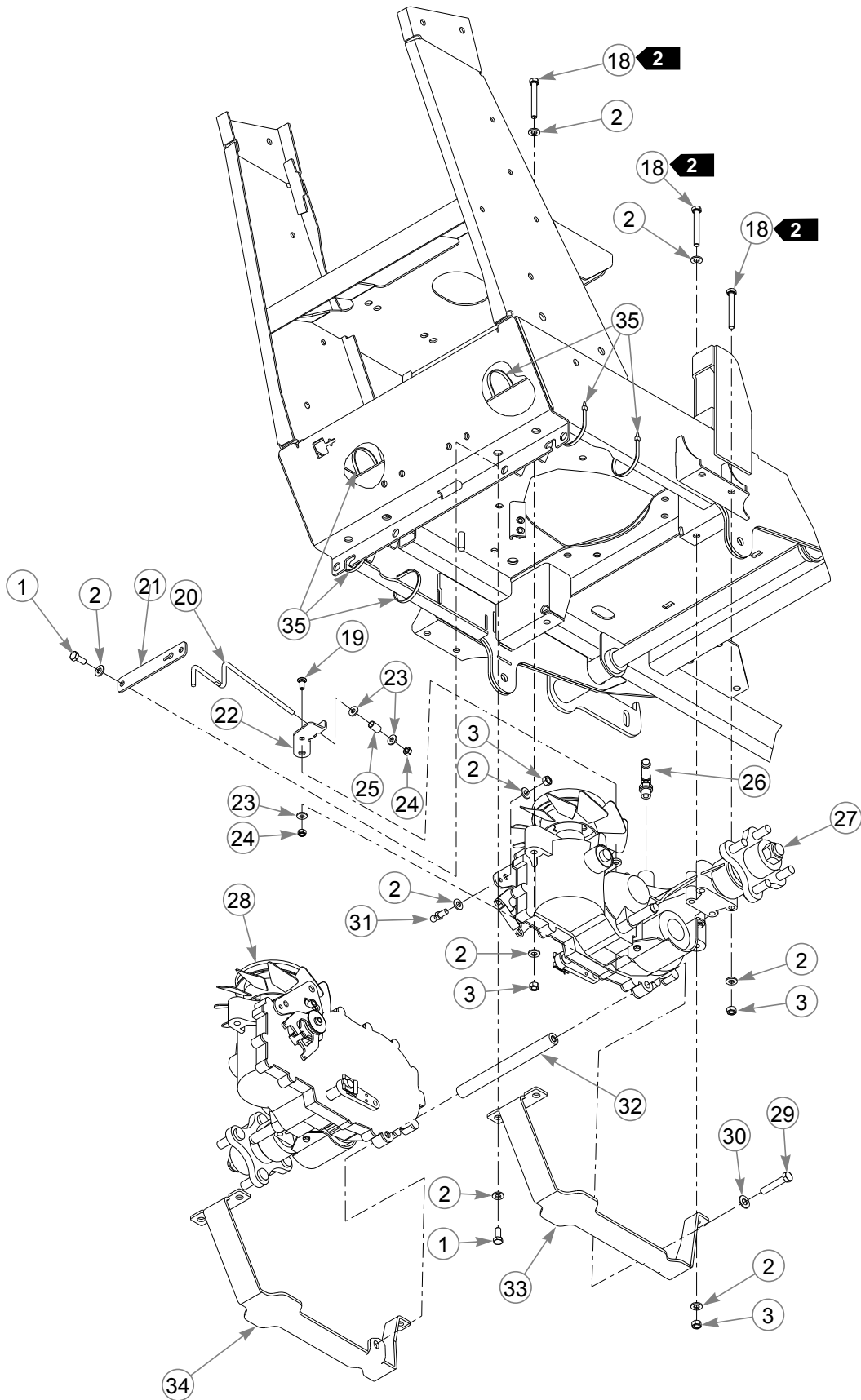
INDEX NO.	PART NO.	QTY.	DESCRIPTION
1	034280	10	CS .312-18 X .750 HX G5
2	768523	28	FW .343 X .687 X .051/.080H
3	034272	12	NT .312-18 HX G5 ZNYC
4	601996	1	EXPANSION TANK
5	601001	4	SPRING CLAMP
6	787713	151 CM	HOSE, 0.50" LOW PRESSURE
7	778746	1	RING, 2" ID SPLIT
8	259812	1	CHAIN
9	036384	1	SPRING 1/4 COIL PL 1.23
10	781153	2	BUSHING
11	110551	1	IDLER ARM
12	786848	1	IDLER PULLEY
13	025296	2	FW .760 X 1.625 X .08 ZNYC
14	601084	1	SB .750 X 2.000 SH.625-11
15	028118	1	FW .625 X 1.00 X .134 ZNYC
16	781872	1	CS .625-11 X 1.25 HX G5 Z
17	601838	1	BELT, A SEC 58.5" EL

## NOTES:

1. Torque to 160 N-m.

HYDRAULIC LINE LENGTHS		
<b>A</b>	56 CM	EXPANSION TANK TO LS TRANSMISSION
<b>B</b>	95 CM	EXPANSION TANK TO RS TRANSMISSION

# 36" Hydraulic System



# 36" Hydraulic System

INDEX NO.	PART NO.	QTY.	DESCRIPTION
18	710087	8	CS .312-18 X 2.500 HX G5
19	601503	2	CB .250-20 X .625 ZNYC
20	602228	2	TOW LINK ROD
21	111157	2	TOW VALVE PLATE
22	111617	1	RS TOW VALVE BRACKET
	111616	1	LS TOW VALVE BRACKET (NOT SHOWN)
23	768515	6	FW .281 X .625 X .051/.080H
24	068551	4	NT .250-20 HXZY NL
25	041988	2	SPRING
26	601219	2	FTG, 90 - 9/16 SAE
27	601683	1	RS TRANSMISSION
28	601682	1	LS TRANSMISSION
29	016410	2	CS .375-16 X 2.00 G5 ZNYC
30	767954	2	FW .406 X .812 X .060 SAE
31	781922	2	BALL STUD
32	110537	1	SPACER TUBE
33	110731	1	RS CHARGE PUMP COVER
34	110730	1	LS CHARGE PUMP COVER
35	000331	6	WIRE TIE, SMALL/SHORT

## NOTES:

2. Torque to 23 N-m.
3. Service parts:

PART NO.	DESCRIPTION	PART NO.	DESCRIPTION
600767	OVERFLOW TANK CAP	601221	BRAKE ARM
600972	BRAKE ARM RETAINER CLIP	601433	4-BOLT HUB KIT
600974	RIGHT FILTER GUARD	602094	FAN/PULLEY KIT
600975	LEFT FILTER GUARD	602208	EXTENSION SPRING
600976	OIL FILTER		

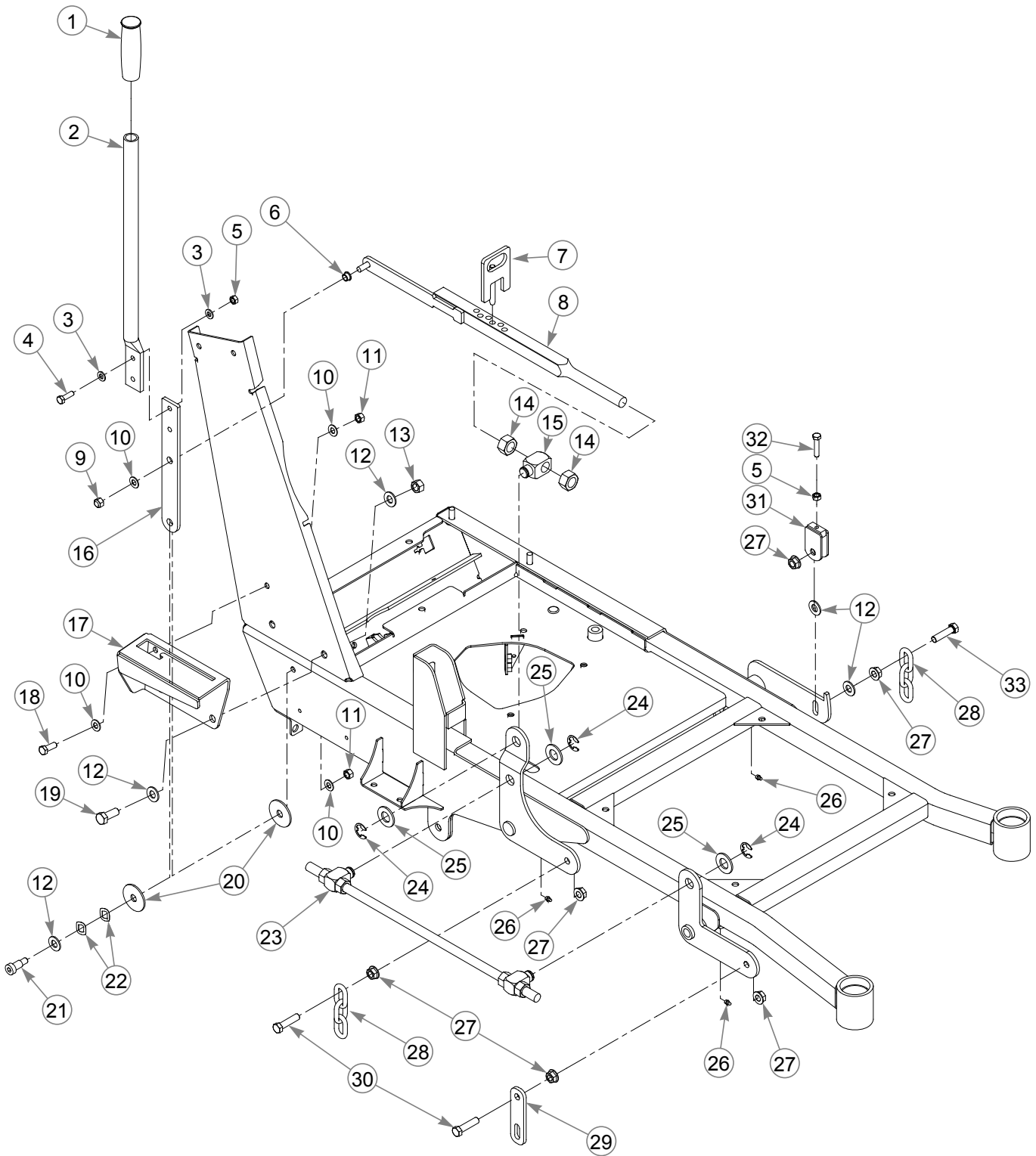


---

## Section 3

36" Deck Lift . . . . .	3-2
36" Deck Mounting . . . . .	3-4
36" Cover . . . . .	3-6

# 36" Deck Lift



---

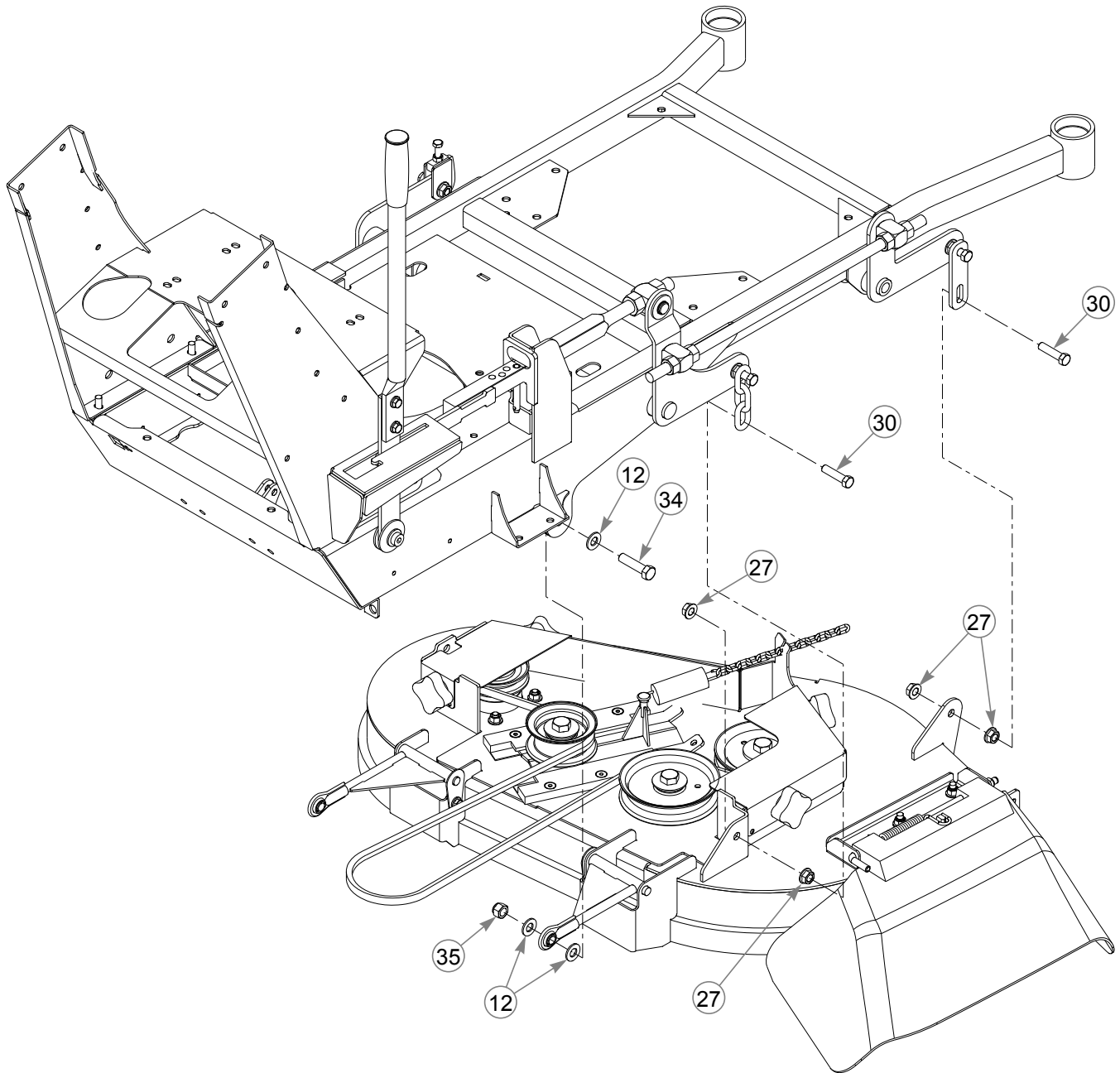
## **36" Deck Lift**

INDEX NO.	PART NO.	QTY.	DESCRIPTION
1	792317	1	GRIP
2	110570	1	DECK LIFT HANDLE
3	768523	4	FW .343 X .687 X .051/.080H
4	036236	2	CS .312-18 X 1.000 HX G5
5	034272	3	NT .312-18 HX G5 ZNYC
6	765339	1	BUSHING
7	348284	1	HEIGHT ADJ STOP
8	110529	1	DECK INDICATOR
9	086660	1	NT .375-16 HXZY NL
10	767954	4	FW .406 X .812 X .060 SAE
11	054502	2	NT .375-16 HX GRD 5 ZNY
12	767962	13	FW .531 X 1.063 X .090 SAE
13	008193	2	NT .500-13 HX G5 ZNYC
14	008417	2	NT .750-10 HX G5 ZNYC
15	781930	1	DECK LIFT BLOCK
16	110530	1	LOWER HANDLE
17	550073	1	DECK LIFT COVER
18	036244	1	CS .375-16 X 1.000 HX G5
19	705954	2	CS .500-13 X 1.25 HX G5 Z
20	263517	2	BEARING DISC
21	728550	1	SB .50 X .75SH .375-16TD
22	601953	2	WAVY WASHER
23	601942	1	DECK LIFT ROD
24	781294	3	E CLIP, 1.00 X .625 X .05
25	601681	3	FW .781 X 1.50 X .120 ZNYC
26	015495	3	GREASE FITTING STRAIGHT
27	704643	12	NT .437-14 HX FLG ZN
28	360131	2	DECK LIFT CHAIN
29	111538	1	DECK LIFT LINK
30	055749	5	CS .437-14 X 1.750 HX G5
31	348458	1	YOKE, DECK LEVELER
32	756270	1	CS .312-18 X 1.50 FLTHR G
33	781831	1	CS .437-14 X 1.750 FULTH

---

### **NOTES:**

# 36" Deck Mounting



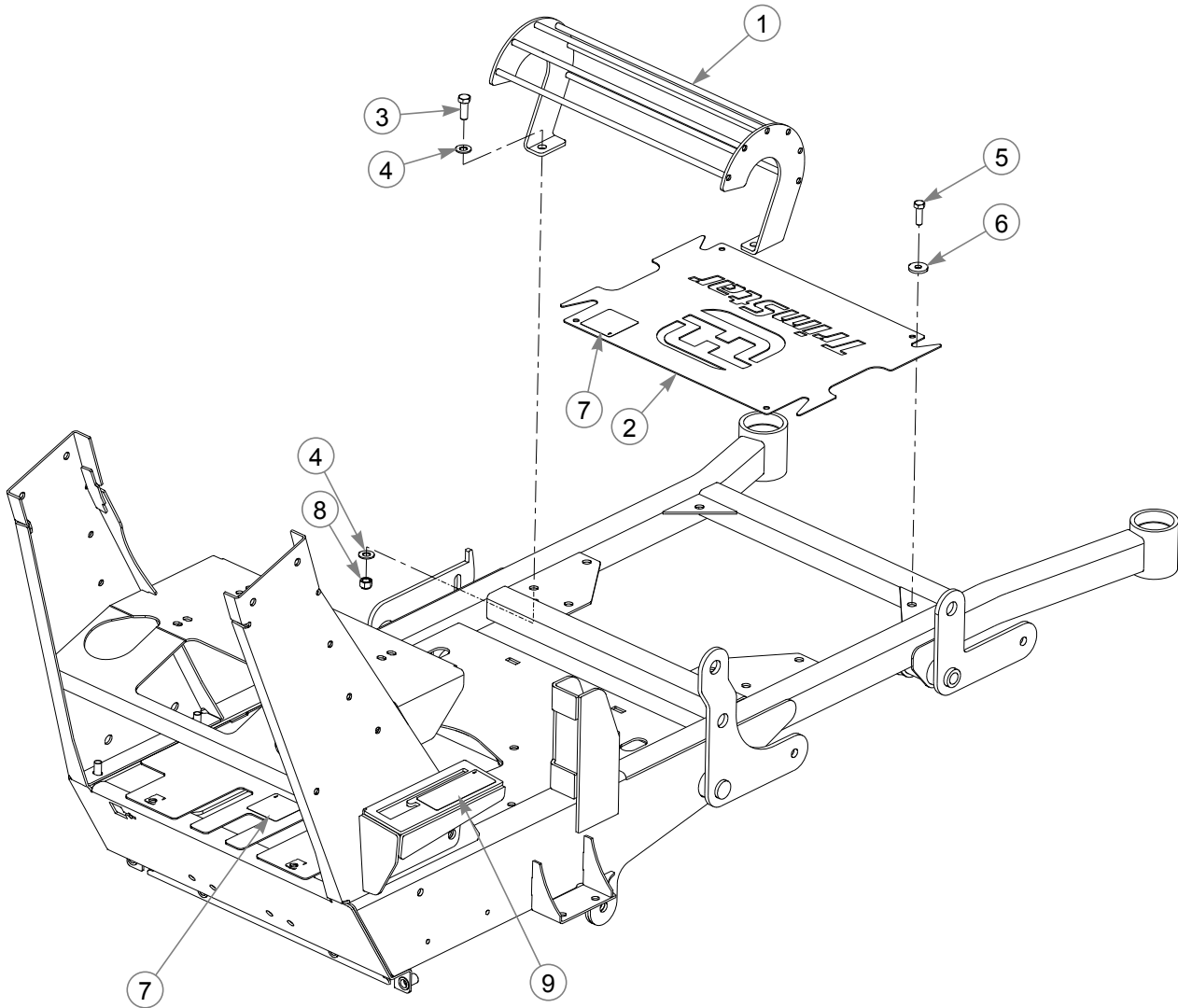
INDEX NO.	PART NO.	QTY.	DESCRIPTION
34	078949	2	CS .500-13 X 2.00 GR ZN
35	781567	2	NT .50-13 HX LK NY

**NOTES:**

---

**This page intentionally left blank.**

# 36" Cover



---

## **36" Cover**

INDEX NO.	PART NO.	QTY.	DESCRIPTION
1	114509	1	HEAT SHIELD
2	114002	1	DECK COVER
3	036244	2	CS .375-16 X 1.000 HX G5
4	767954	4	FW .406 X .812 X .060 SAE
5	036236	4	CS .312-18 X 1.000 HX G5
6	712927	4	FW .344 X 1.00 X.12 HRD Z
7	602562	2	NO SERVICE DECAL
8	086660	2	NT .375-16 HXZY NL
9	602061	1	DECK HEIGHT IND DECAL

---

### **NOTES:**

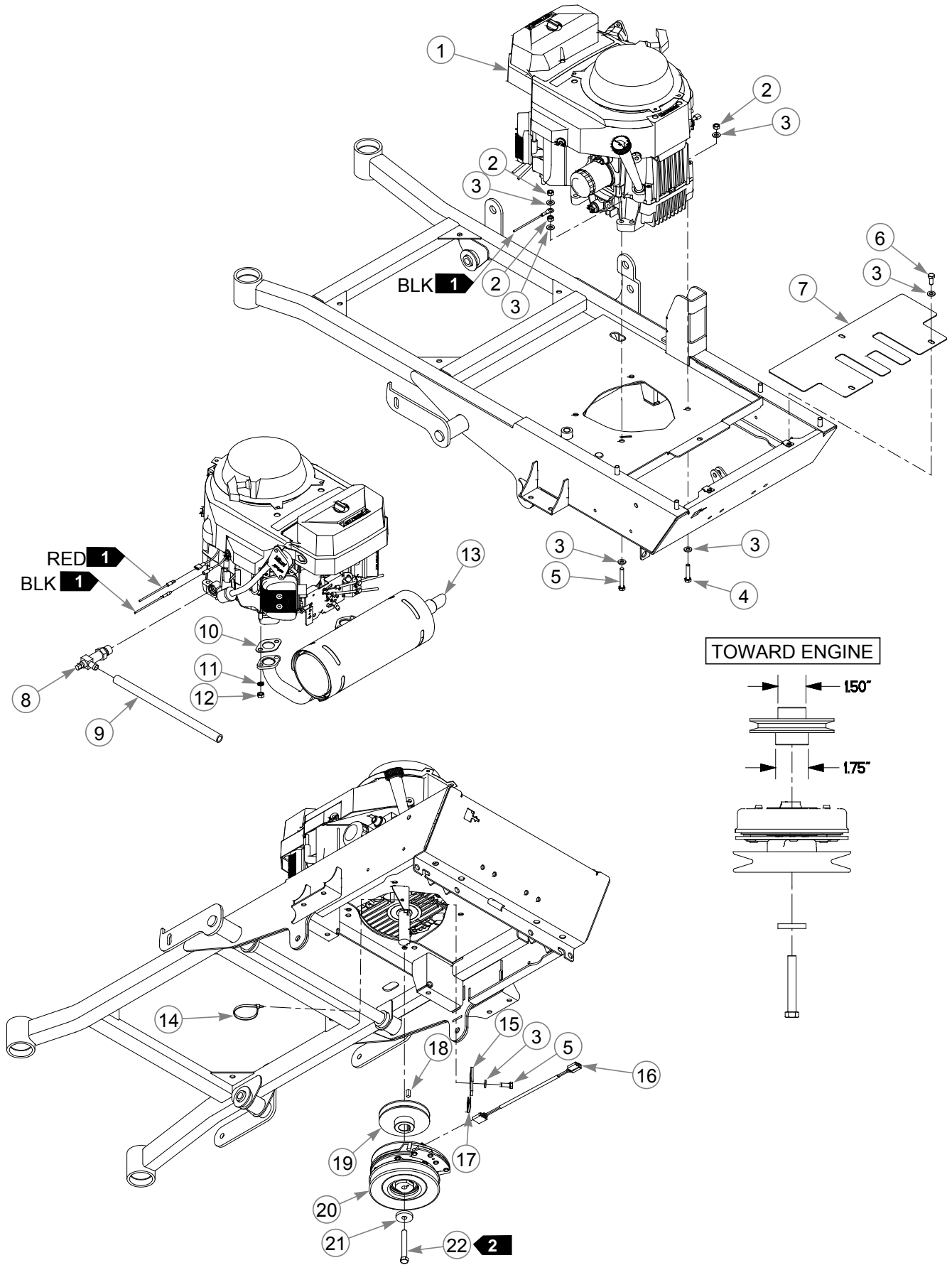


---

## Section 4

Engine, 15HP KAW . . . . .	4-2
Fuel System . . . . .	4-4
Instrument Panel . . . . .	4-6
Throttle . . . . .	4-12
36" Brake . . . . .	4-14

# Engine, 15HP KAW



---

## **Engine, 15HP KAW**

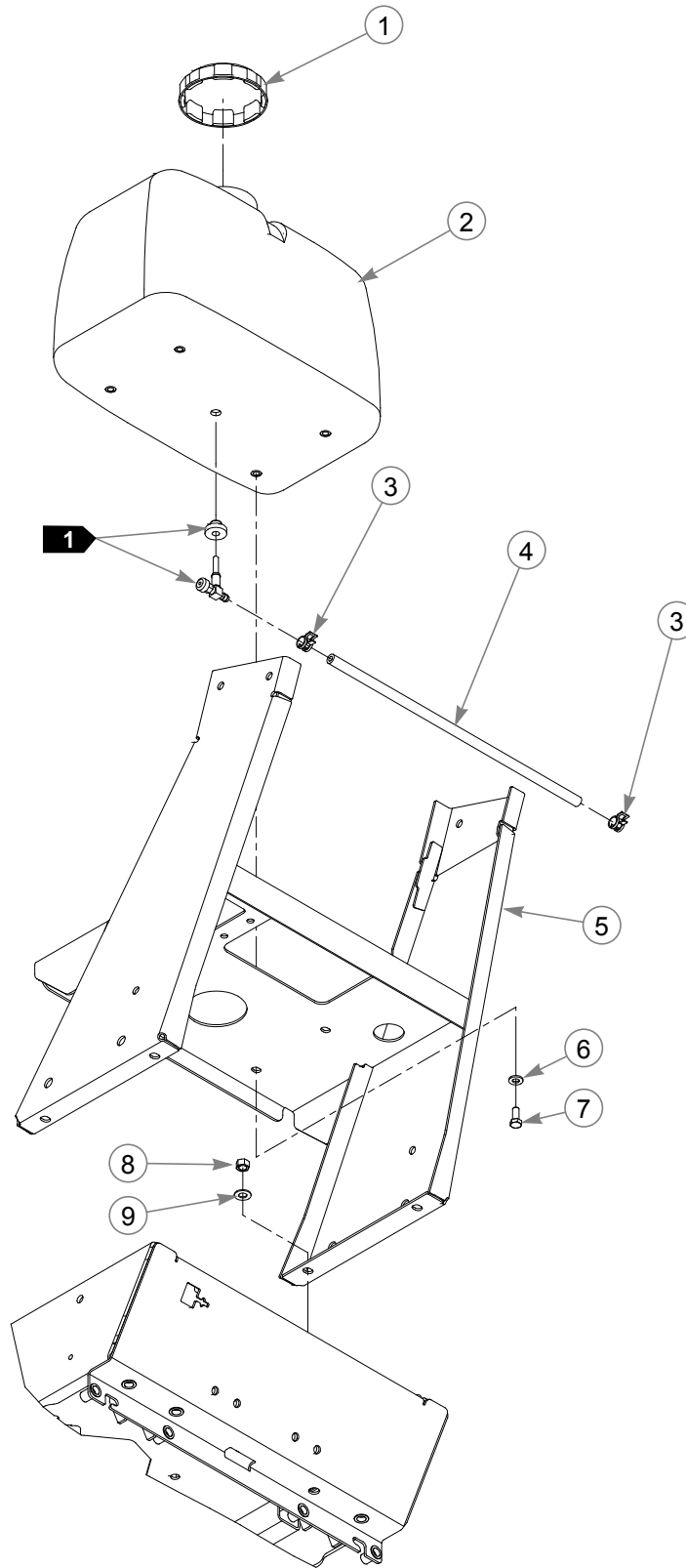
INDEX NO.	PART NO.	QTY.	DESCRIPTION
1	791343	1	ENGINE, KAWASAKI 15HP
2	034272	5	NT .312-18 HX G5 ZNYC
3	768523	15	FW .343X.687X.051/.080H
4	052837	4	CS .312-18X1.500 HX G5
5	064345	1	CS .312-18X2.000 HX G5
6	034280	5	CS .312-18X .750 HX G5
7	110736	1	ENGINE PLATE COVER
8	796524	1	VALVE,OIL DRAIN M20X2.5
9	787713	1	HOSE, 0.50" LOW PRESSURE, 13" LONG
10	791558	2	GASKET, EXHAUST 15&17HP
11	017004	4	LW .312 MED SPRING ZNYC
12	782664	4	NT M8-1.25 HX STAINLESS
13	601799	1	MUFFLER, 15HP KAW
14	000331	1	WIRE TIE, SMALL/SHORT
15	111557	1	CLUTCH ANCHOR PLATE
16	791251	1	HARNES, CLUTCH PIGTAIL
17	784918	1	BUMPER, RUBBER
18	712372	1	KEY 1/4 SQ X 0.66 LG(FS)
19	799429	1	PULLEY, A SEC, 4.5 OD
20	601325	1	CLUTCH, WARNER
21	763417	1	FW .454X1.50X.250
22	785048	1	CS .437-20X3.00 HX G5 Z

---

### **NOTES:**

1. Part of wiring harness .
2. Torque to 45-48 ft-lbs. Replace (do not reuse) capscrew if removed or loosened. Use only hand tools to install this fastener.
3. Engine oil capacity: See engine owner's manual.

# Fuel System



---

# **Fuel System**

INDEX NO.	PART NO.	QTY.	DESCRIPTION
1	779306	1	FUEL CAP,3.5"
2	792044	1	FUEL TANK
3	000323	2	CLIP
4	015818	1	FUEL LINE 17"
5	110511	1	CONSOLE SUPPORT
6	768523	4	FW .343X.687X.051/.080H
7	034280	4	CS .312-18X .750 HX G5
8	054502	4	NT .375-16 HX GRD 5 ZNY
9	767954	4	FW .406X .812 X.060 SAE

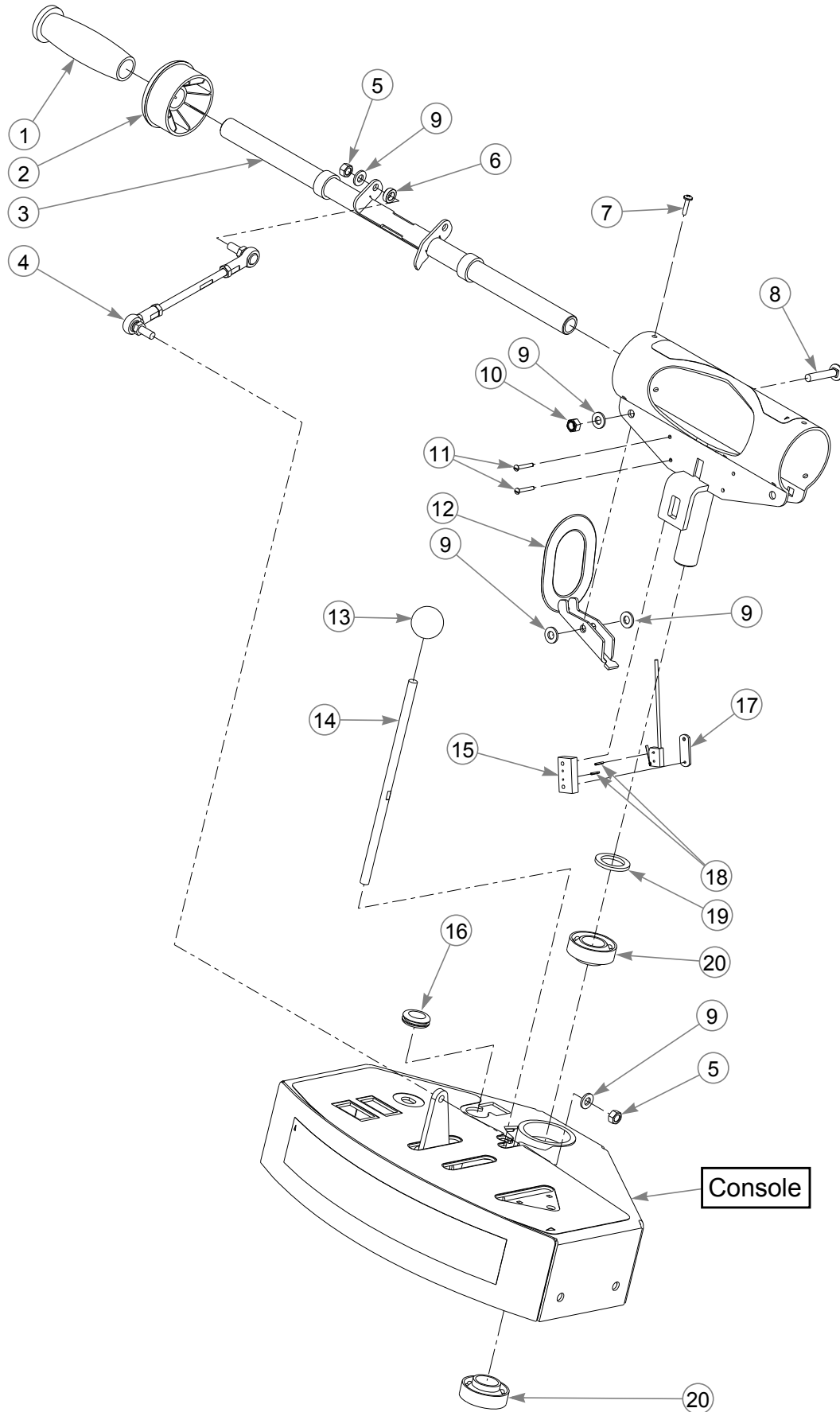
---

### **NOTES:NOTES:**

1. Valve and grommet included with new fuel tank.
2. Service parts available for the fuel tank:

PART NUMBER	DESCRIPTION	PART NUMBER	DESCRIPTION
785295	FLANGE GROMMET	783944	FUEL SHUT-OFF VALVE

# Instrument Panel



---

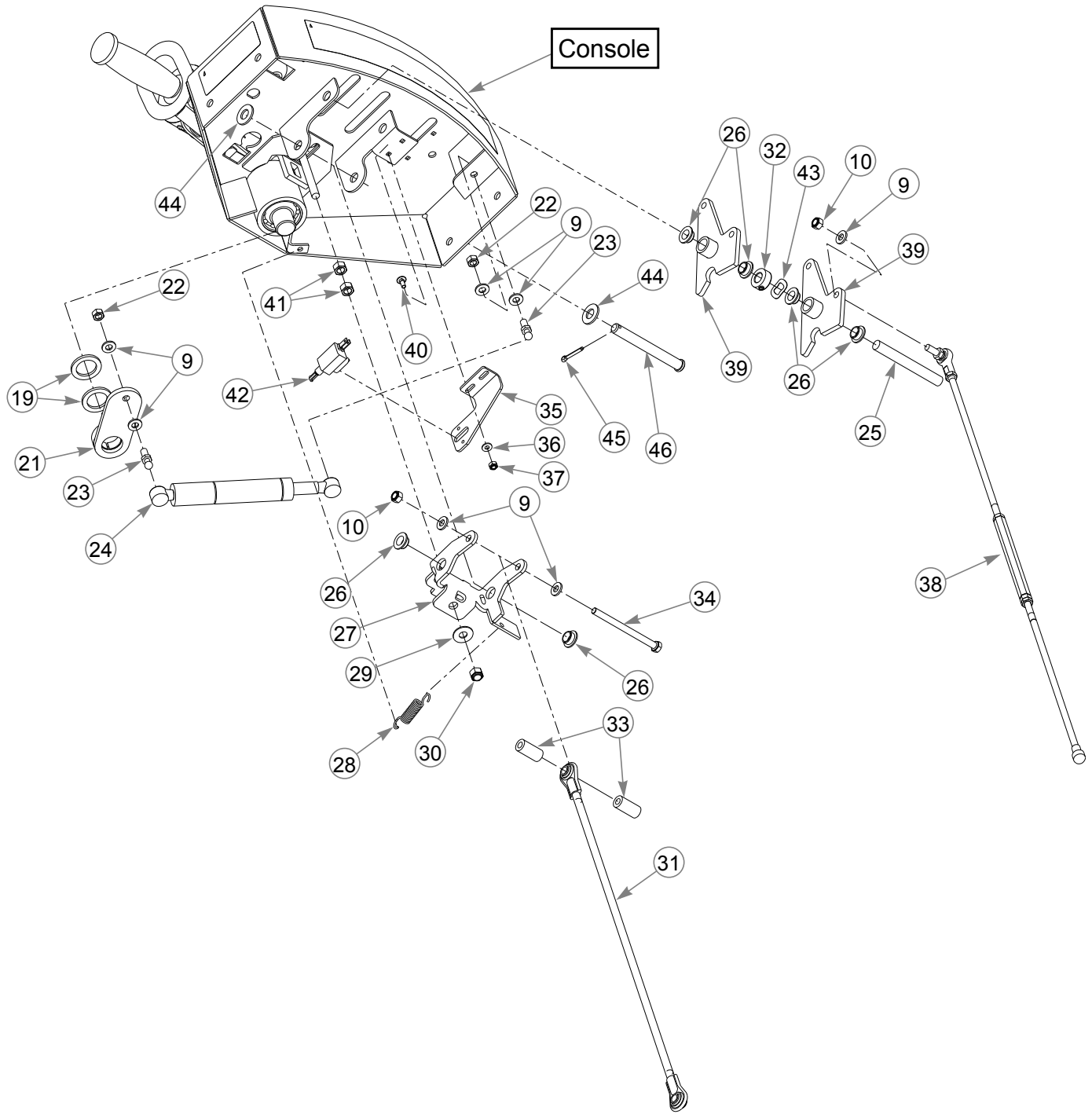
## **Instrument Panel**

INDEX NO.	PART NO.	QTY.	DESCRIPTION
1	771139	2	GRIP, .875 X 4.562 BLK
2	773556	2	STEERING BEARING
3	110766	1	STEERING BAR
4	785766	2	STEERING ROD, ADJUSTER
5	041152	4	NT .312-24 HX ZNYC
6	601839	2	PIVOT SPACER BUSHING
7	769299	6	SC #10 X .750 PHILLIPS T
8	779157	2	CB .312-18 X 1.750 SHTNK
9	768523	18	FW .343 X .687 X .051/.080H
10	058776	5	NT .312-18 HXZY NL
11	077842	4	MS # 6-32 X 1.000 RD SL
12	341826	2	OPC ARM
13	043299	1	KNOB
14	110645	1	NEUTRAL LOCK HANDLE ROD
15	342378	2	SWITCH SPACER
16	047456	1	GM .750 X .188 X 1.00 X .12
17	039693	2	WN #6-32 X 1.00 TP 1116
18	779165	4	RP .078 X .50 LONG ZN
19	045765	3	FW 1.030 X 1.500 X .134 ZN
20	784223	2	BEARING

---

### **NOTES:**

# Instrument Panel



---

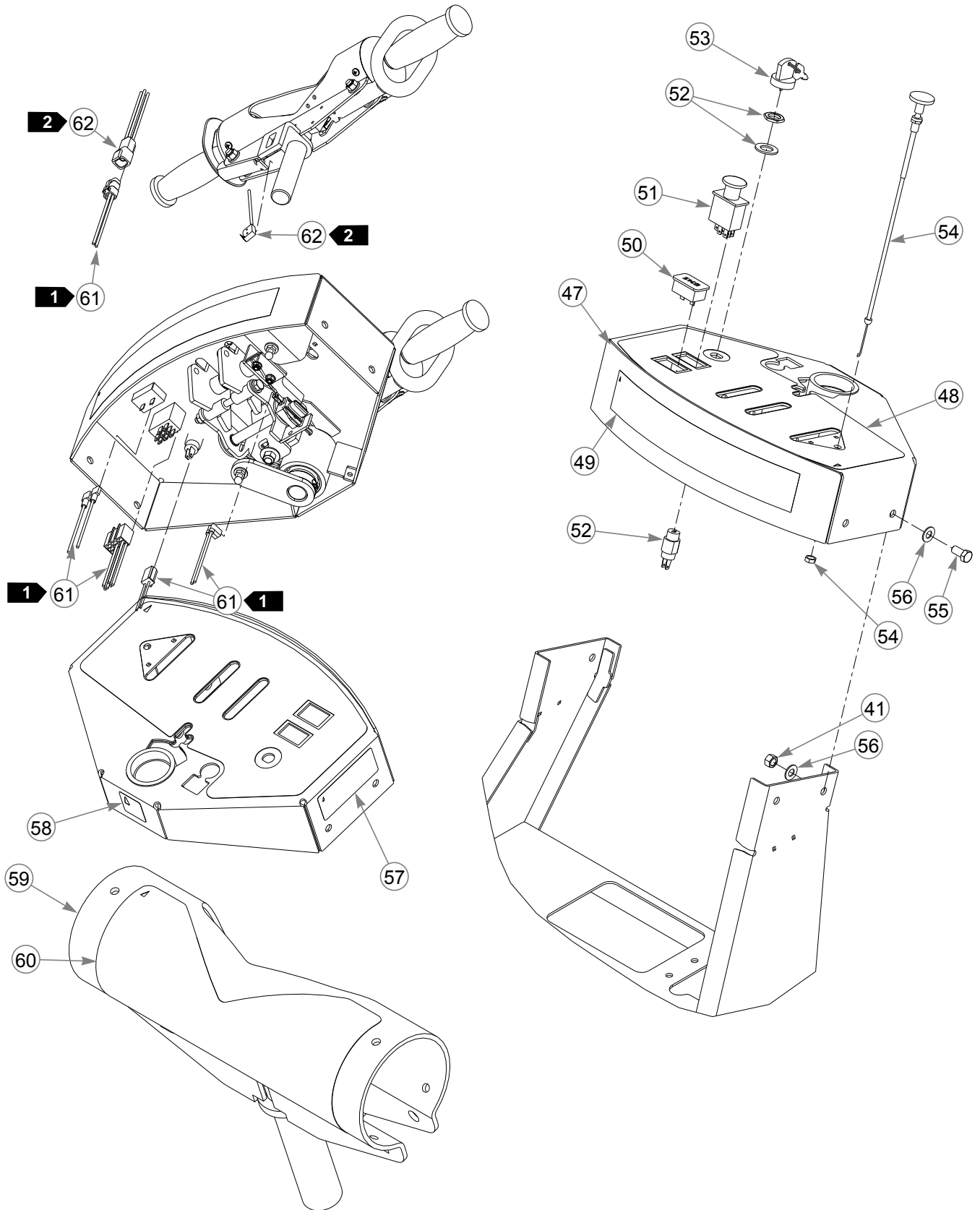
## **Instrument Panel**

INDEX NO.	PART NO.	QTY.	DESCRIPTION
21	314351	1	ARM
22	034272	2	NT .312-18 HX G5 ZNYC
23	781922	2	BALL STUD
24	788349	1	CENTERING DAMPER
25	305086	1	PIVOT PIN
26	768259	6	BUSHING
27	110932	1	NEUTRAL LOCK YOKE
28	034652	1	SPRING 2.5
29	076422	1	FW .406 X 1.000 X .06 ZNYC
30	086660	1	NT .375-16 HXZY NL
31	601798	1	BRAKE ROD ASSY
32	788554	1	LOCK COLLAR, .500 X 1.000
33	110647	2	NEUTRAL LOCK SPACER
34	785113	1	CS .312-18 X 4.250 HX G5
35	110646	1	NEUTRAL SWITCH BRACKET
36	704932	2	FW .219 X .500 X .048 ZNYC
37	059832	2	NT #10-24 HX NL ZN
38	601952	2	PUMP ADJUSTMENT ROD
39	110639	2	BELLCRANK
40	601098	2	CB 10-24 X .500 ZYNC
41	054502	6	NT .375-16 HX GRD 5 ZNY
42	792374	1	PLUNGER SNAP MOUNT SWITCH
43	601953	1	WASHER, WAVY .558 X 1.005
44	767962	2	FW .531 X 1.063 X .090 SAE
45	017251	1	CP .156D X 1.000 LG HML Z
46	073338	1	CE .500 X 4.50 .156 X 4.34

---

### **NOTES:**

# Instrument Panel



---

## **Instrument Panel**

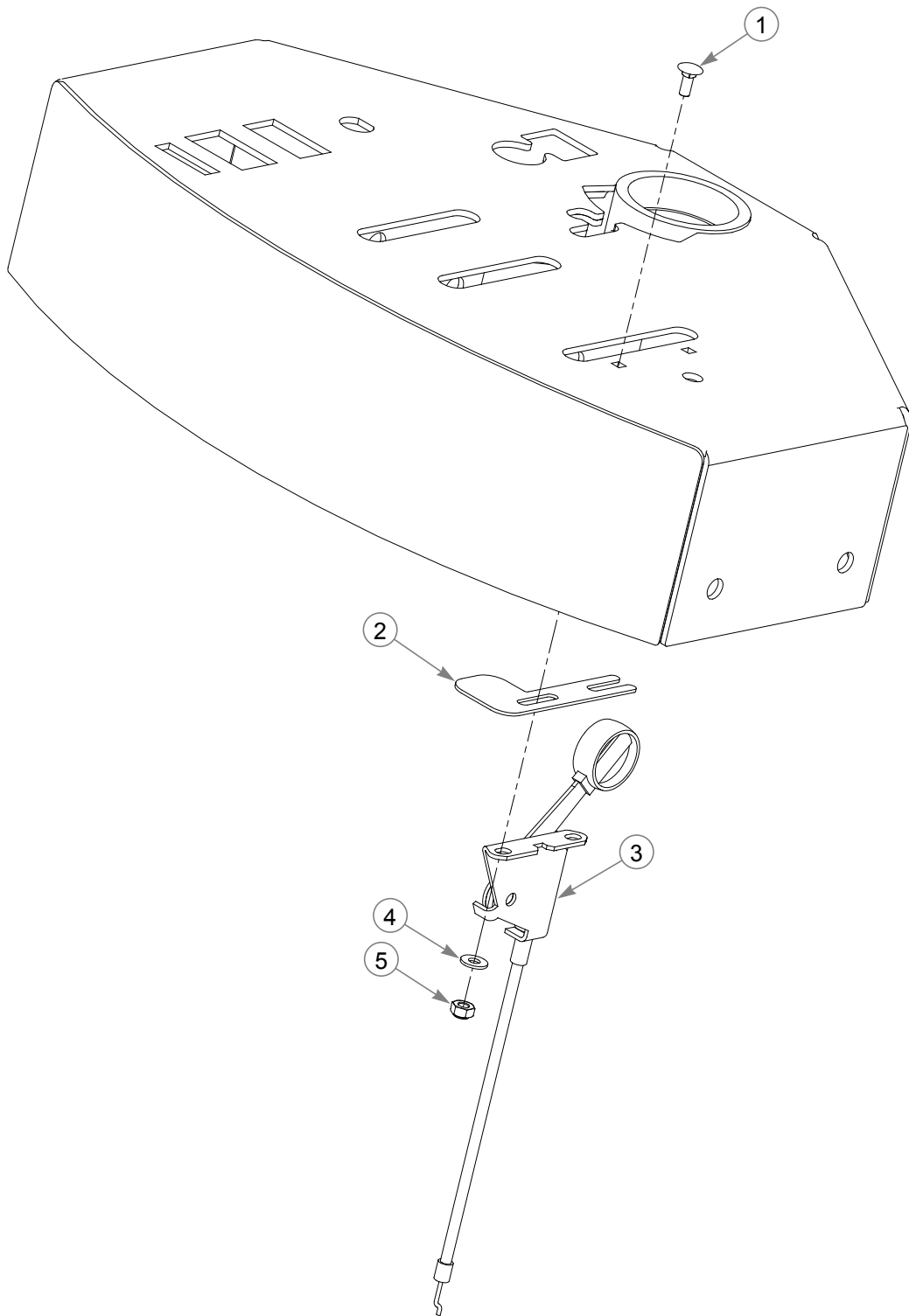
INDEX NO.	PART NO.	QTY.	DESCRIPTION
47	550072	1	CONSOLE TS SERV ASSY (WITH DECALS)
48	601934	1	INSTRUMENT PANEL DECAL
49	788828	1	ID DECAL
50	769166	1	HOUR METER
51	776476	1	PTO SWITCH
52	776518	1	IGN SWITCH
53	785808	1	KEY ASSEMBLY
54	601097	1	CHOKE CABLE
55	055822	4	CS .375-16 X .750 HX G5
56	767954	8	FW .406 X .812 X .060 SAE
57	601967	1	ENGINE COMPARTMENT DECAL
58	727172	1	MADE IN U.S.A. DECAL
59	550071	1	H-BAR TS SERV ASSY (WITH DECAL)
60	771030	1	H-BAR STEERING DECAL
61	603314	1	WIRE HARNESS
62	601972	1	WIRE HARNESS OPC

---

### **NOTES:**

1. Part of wire harness.
2. Part of wire harness OPC.

# Throttle



---

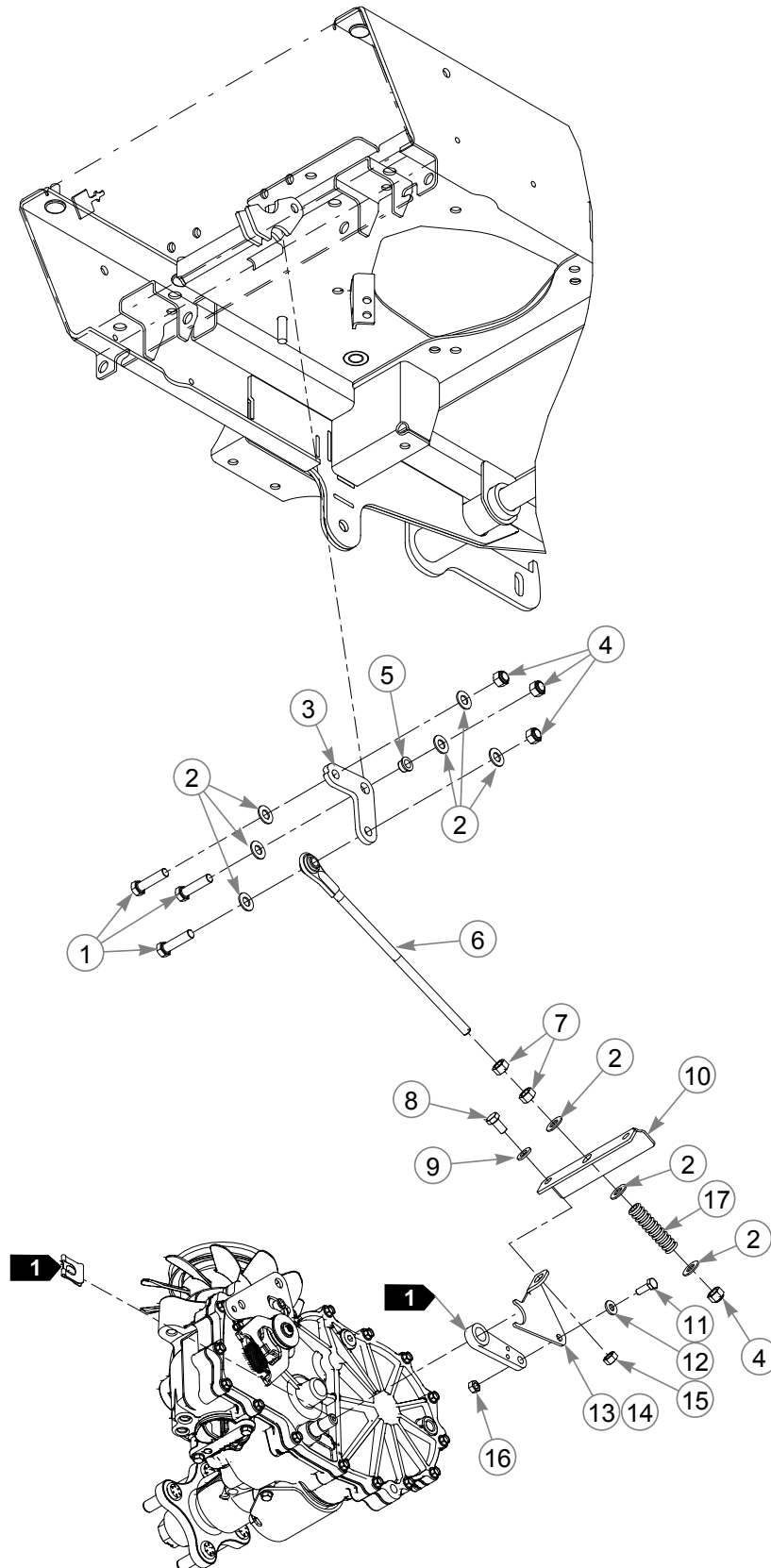
# **Throttle**

INDEX NO.	PART NO.	QTY.	DESCRIPTION
1	601098	2	CB 10-24 X .500 ZYNC
2	102707	1	CE THROTTLE STOP
3	778365	1	THROTTLE CABLE
4	704932	2	FW .219 X .500 X .048 ZNYC
5	059832	2	NT #10-24 HX NL ZN

---

## **NOTES:**

# 36" Brake



---

## **36" Brake**

INDEX NO.	PART NO.	QTY.	DESCRIPTION
1	080655	3	CS .375-16 X 1.500 HX G5
2	767954	9	FW .406 X .812 X .060 SAE
3	110539	1	LOWER BRAKE BELLCRANK
4	086660	4	NT .375-16 HXZY NL
5	765339	1	BUSHING
6	601710	1	LOWER BRAKE ROD ASSY
7	054502	2	NT .375-16 HX GRD 5 ZNY
8	064006	2	CS .312-18 X .625 HX G5
9	768523	2	FW .343 X .687 X .051/.080H
10	110538	1	BRAKE PULL BRACKET
11	055939	2	CS .250-20 X .750 HX G5
12	768515	2	FW .281 X .625 X .051/.080H
13	109202	1	RS BRAKE SPRING LINK
14	109203	1	LS BRAKE SPRING LINK
15	034272	2	NT .312-18 HX G5 ZNYC
16	024927	2	NT .250-20 HX GR.5 ZNYC
17	784421	1	BRAKE TENSION SPRING

---

### **NOTES:**

1. Supplied with transmission.

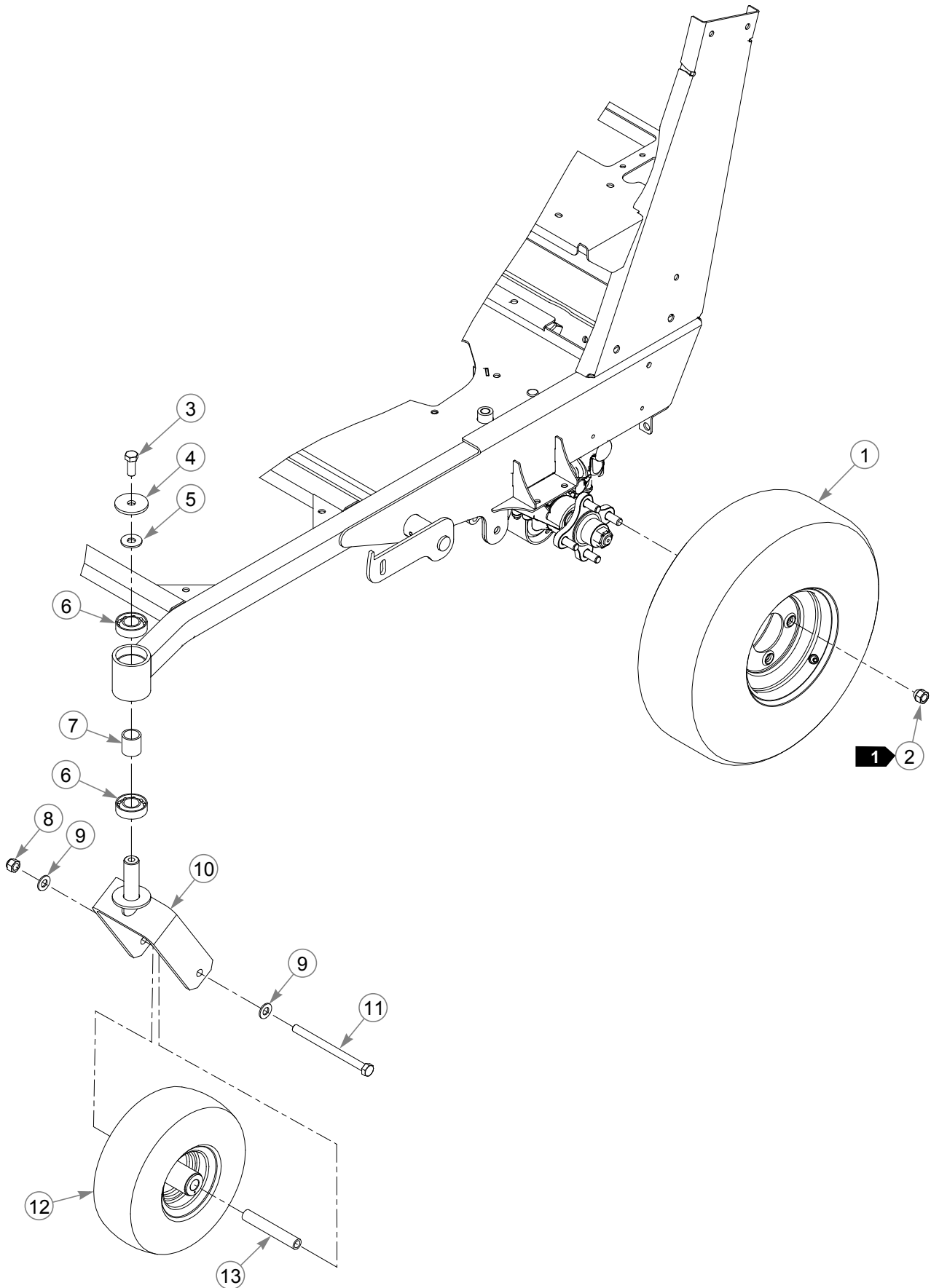


---

## Section 5

36" Wheels & Tires . . . . .	5-2
Caster Wheel Breakdown . . . . .	5-4
Drive Wheel Breakdown . . . . .	5-5

# 36" Wheels & Tires



---

## **36" Wheels & Tires**

INDEX NO.	PART NO.	QTY.	DESCRIPTION
1	785345	2	TIRE/WHEEL, 18 X 6.50-8
2	061077	8	WHEEL NUT
3	705954	2	CS .500-13 X 1.25 HX G5 Z
4	344267	2	FW .510 X 2.15 X .187 SPL
5	712976	2	FW .531 X 1.375 X .125 ZNY
6	784223	4	BEARING
7	784603	2	SPACER
8	781567	2	NT .50-13 HXZY NL
9	767962	4	FW .531 X 1.063 X .090 SAE
10	339689	2	CASTER FORK
11	042630	2	CS .500-13 X 6.50 HX G5 Z
12	788604	2	TIRE/WHEEL, 11 X 4-5
13	306969	2	GAGE WHEEL SPACER

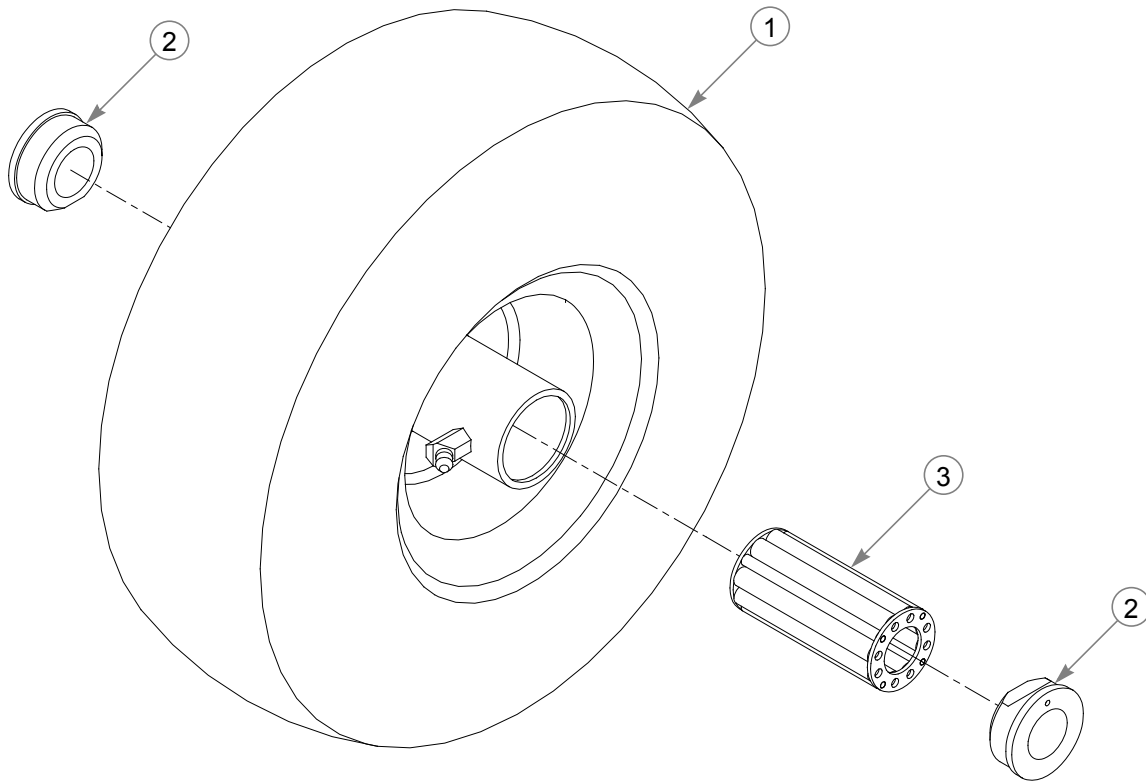
---

### **NOTES:**

1. Torque to 88-102 N-m.

---

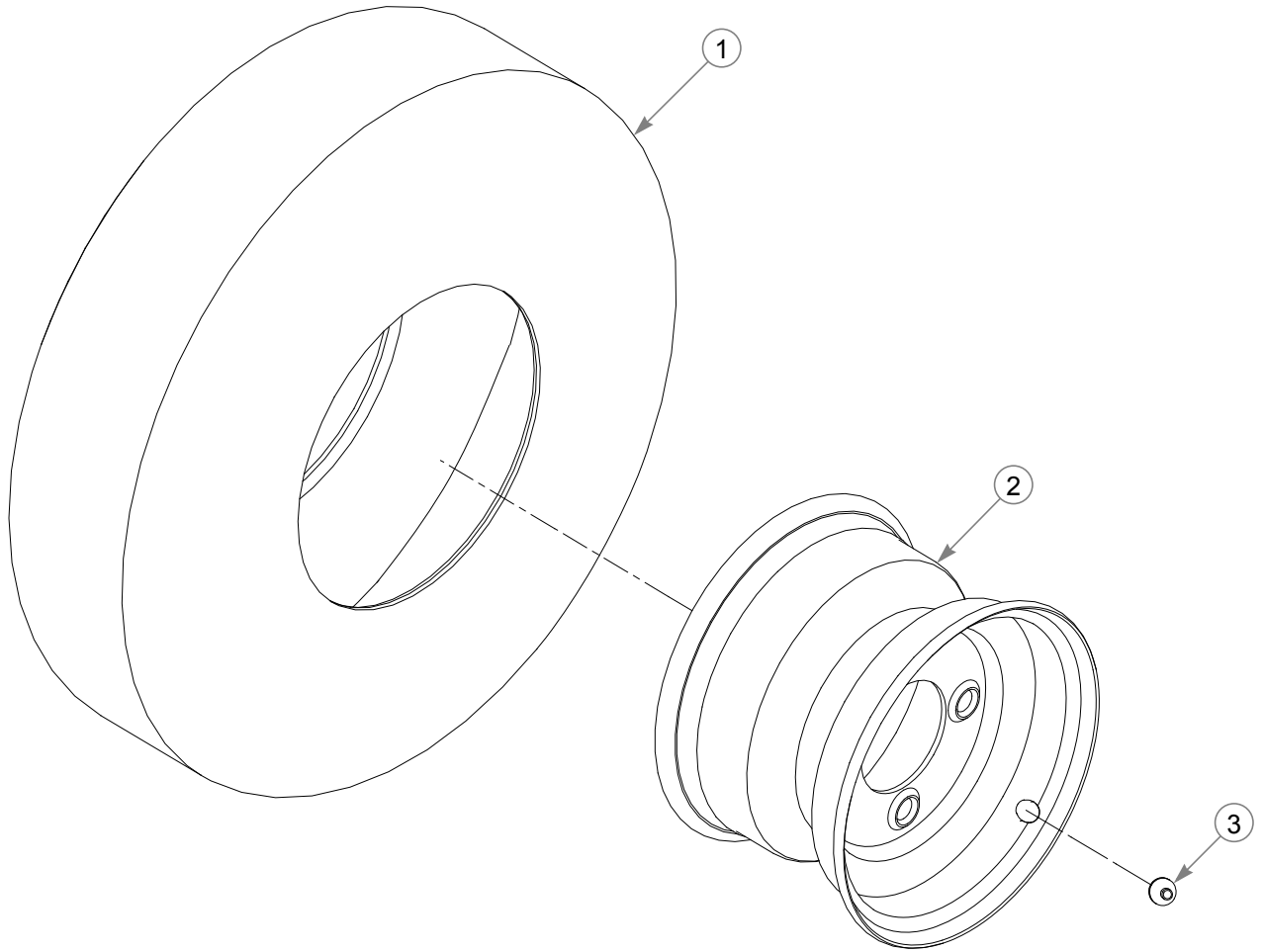
## Caster Wheel Breakdown



---

INDEX NO.	PART NO.	QTY.	DESCRIPTION
1	788604	1	TIRE/WHEEL ASSY 11X4-5
2	772806	2	BEARING CAP
3	772814	1	3/4" ROLLER BEARING

# Drive Wheel Breakdown



INDEX NO.	PART NO.	QTY.	DESCRIPTION
1	785337	2	TIRE 18 X 6.50-8 4 PLY
	600684	2	TIRE 20 X 10-10
2	785303	2	WHEEL 5.35
	600700	2	WHEEL 10 X 7 RIM, 4-4BC
3	019521	2	TIRE VALVE TR-412

## NOTES:

1. Tire & wheel usage:

785337 785303	36" mower
------------------	-----------

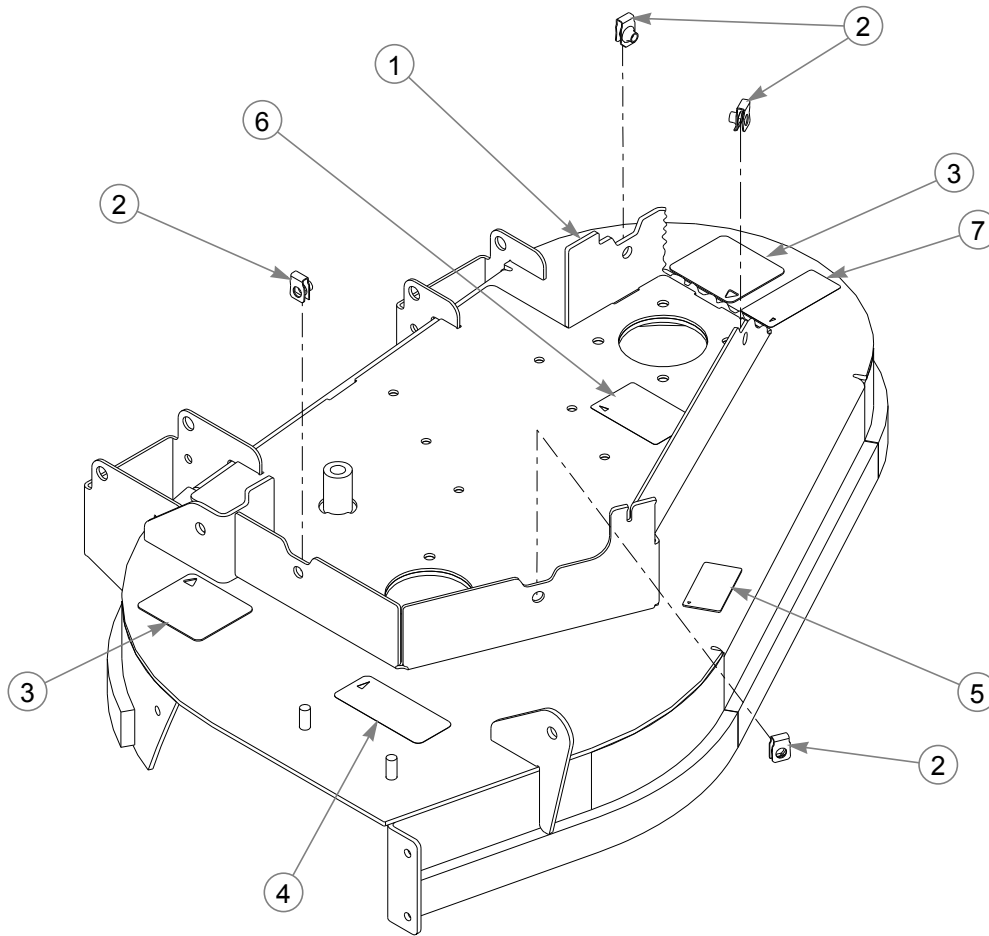


---

## Section 6

36" Deck Decals . . . . .	6-2
36" Deck Pulleys & Spindles . . . . .	6-4
36" Deck . . . . .	6-6
Spindle Assembly—783506 . . . . .	6-8

# 36" Deck Decals



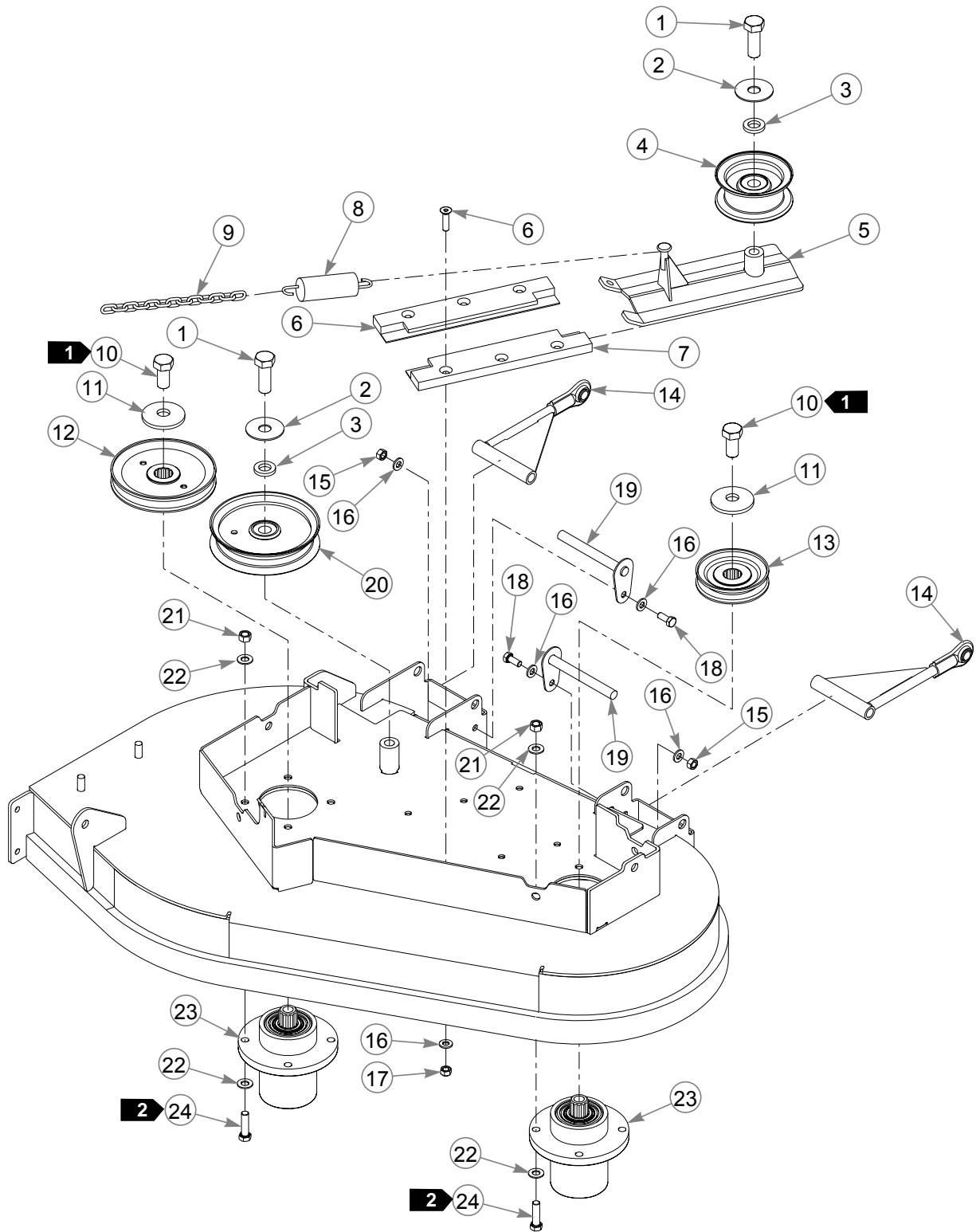
INDEX NO.	PART NO.	QTY.	DESCRIPTION
1	550229	1	36" DECK (WITH HARDWARE & DECALS)
2	601069	4	CN .312-18 X .200 MAX THK
3	601787	2	DECK WARNINGS DECAL
4	601796	1	DISCHARGE CHUTE DECAL
5	793513	1	36" DECK ID DECAL
6	602243	1	BELT ROUTING DECAL
7	601931	1	THROWN OBJECTS DECAL

**NOTES:**

---

**This page intentionally left blank.**

# 36" Deck Pulleys & Spindles



---

## **36" Deck Pulleys & Spindles**

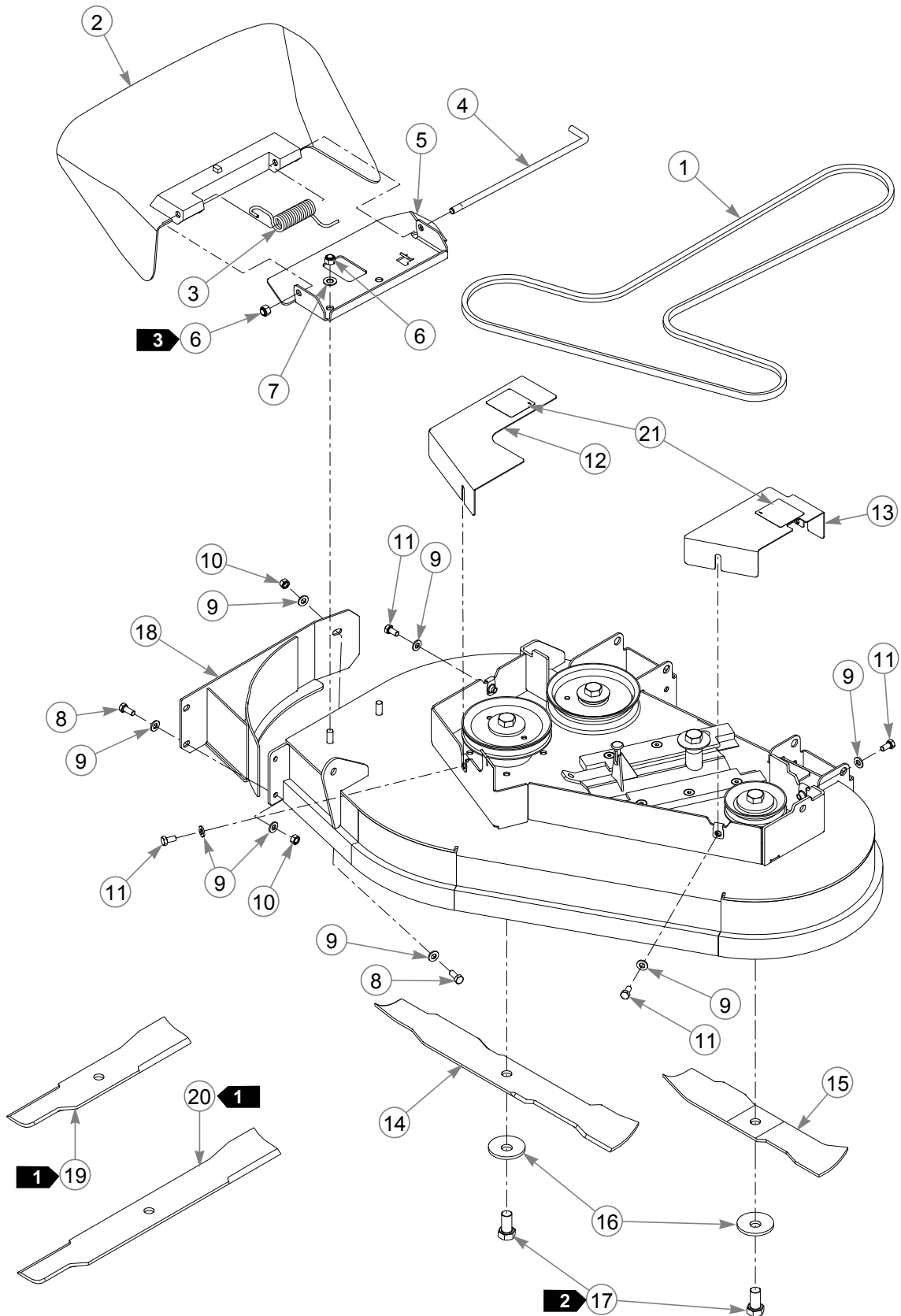
INDEX NO.	PART NO.	QTY.	DESCRIPTION
1	025007	2	CS .625-11 X 1.750 HX G5
2	046821	2	FW .656X 2.00 X .078 ZNYC
3	797449	2	FW .650 X 1.125 X .18 ZNYCG5
4	601162	1	IDLER PULLEY, 3.06"
5	105031	1	DECK IDLER
6	784199	6	CS .312-18 X 1.250 FLT SH
7	601434	2	IDLER SLIDE
8	036384	1	IDLER SPRING
9	259812	1	CHAIN
10	781872	2	CS .625-11 X 1.25 HX G5 Z
11	782474	2	CW .631 2.250 X .187 PNT
12	796656	1	PULLEY, 5.62 EOD, A-SEC
13	796664	1	PULLEY, 3.75 EOD, A-SEC
14	330225	2	PULLBAR
15	034272	2	NT .312-18 HX G5 ZNYC
16	768523	10	FW .343 X .687 X .051/.080H
17	058776	6	NT .312-18 HXZY NL
18	034280	2	CS .312-18 X .750 HX G5
19	322974	2	PULLBAR PIN
20	781856	1	IDLER PULLEY, NHI 5.00"
21	054502	8	NT .375-16 HX GRD 5 ZNY
22	767954	16	FW .406 X .812 X .060 SAE
23	783506	2	BLADE SPINDLE ASSEMBLY
24	005116	8	CS .375-16 X 1.375 HX G5

---

### **NOTES:**

1. Torque to 160 N-m.
2. Torque to 40 N-m.

# 36" Deck



---

## **36" Deck**

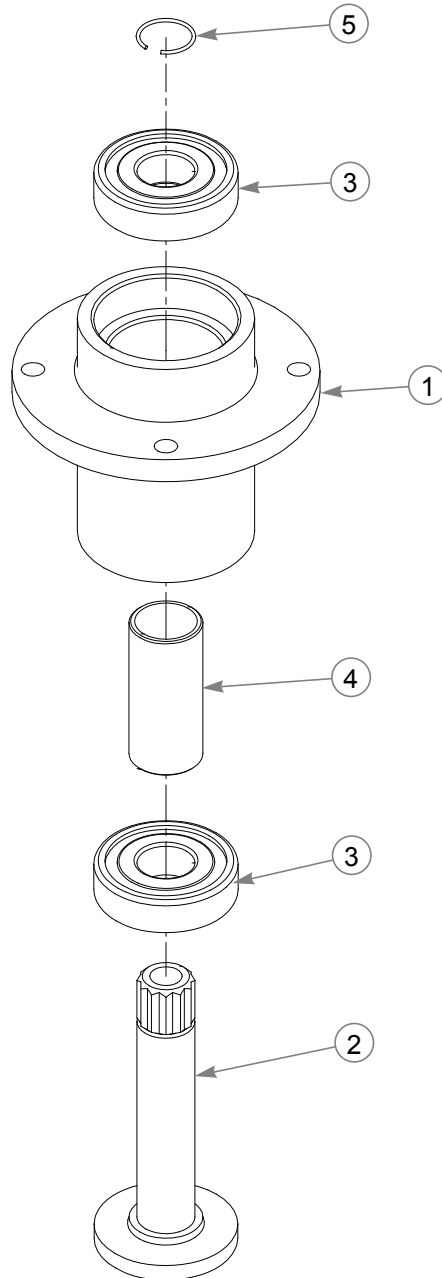
INDEX NO.	PART NO.	QTY.	DESCRIPTION
1	601786	1	BELT, A 89.50 EL
2	601806	1	DISCHARGE CHUTE
3	601824	1	TORSION SPRING
4	601843	1	CHUTE PIN
5	114793	1	CHUTE BRACKET
6	086660	3	NT .375-16 HXZY NL
7	767954	2	FW .406 X .812 X .060 SAE
8	034280	3	CS .312-18 X .750 HX G5
9	768523	10	FW .343 X .687 X .051/.080H
10	034272	3	NT .312-18 HX G5 ZNYC
11	064006	4	CS .312-18 X .625 HX G5
12	550475	1	RS PULLEY COVER (WITH DECAL)
13	550476	1	LS PULLEY COVER (WITH DECAL)
14	794214	1	BLADE, 20.50"-MUL-F-CW
15	794206	1	BLADE, 13.75"-MUL-F-CW
16	782474	2	CW .631 2.250 X .187 PNT
17	781872	2	CS .625-11 X 1.25 HX G5 Z
18	107655	1	MULCH BAFFLE
19	600900	1	BLADE, F13.75"-L-F-CW
20	600901	1	BLADE, F20.50"-L-F-CW
21	602562	2	NO SERVICE DECAL

---

### **NOTES:**

1. Blades to be used when side discharging.
2. Torque to 160 N-m.
3. Do not torque, the discharge chute must pivot freely.

# Spindle Assembly—783506



INDEX NO.	SERVICE PART NO.	QTY.	DESCRIPTION
1	783514	1	HOUSING, BLADE SPINDLE
2	783522	1	SHAFT, BLADE SPINDLE
3	783555	2	BEARING, BLADE SPINDLE
4	783530	1	SPACER, BLADE SPINDLE
5	783548	1	RING, BLADE SPINDLE RETAINER

# Numerical Index

Part No.	Page No.	Part No.	Page No.	Part No.	Page No.
<b>Index</b>					
<b>Part Numbers</b>					
000323	4-5	109202	4-15	601097	4-11
000331	4-3	109203	4-15	601098	4-9, 4-13
005116	6-5	110511	4-5	601162	6-5
008193	3-3	110529	3-3	601221	2-9
008417	3-3	110530	3-3	601325	4-3
015495	3-3	110538	4-15	601433	2-9
015818	1-1, 4-5	110539	4-15	601434	6-5
017004	4-3	110570	3-3	601681	3-3
017251	4-9	110639	4-9	601710	4-15
019521	5-5	110645	4-7	601786	1-1, 6-7
024927	4-15	110646	4-9	601787	6-2
025007	6-5	110647	4-9	601796	6-2
033001	1-1, 2-3	110736	4-3	601798	4-9
034272	3-3, 4-3, 4-9, 4-15, 6-5, 6-7	110766	4-7	601799	4-3
034280	4-3, 4-5, 6-5, 6-7	110932	4-9	601806	6-7
034652	4-9	111251CE	1-1	601824	6-7
036236	3-3, 3-7	111478	1-2	601838	1-1
036244	3-3, 3-7	111538	3-3	601839	4-7
036384	6-5	111557	4-3	601843	6-7
039693	4-7	114002	3-7	601931	6-2
041152	4-7	114509	3-7	601934	4-11
042630	5-3	114793	6-7	601942	3-3
043299	4-7	259812	6-5	601952	4-9
045765	4-7	263517	3-3	601953	3-3, 4-9
046821	6-5	305086	4-9	601967	4-11
047456	4-7	306969	5-3	601972	4-11
052837	4-3	314351	4-9	602041	2-3
054502	3-3, 4-5, 4-9, 4-15, 6-5	322974	6-5	602061	3-7
055749	3-3	330225	6-5	602094	2-9
055822	4-11	339689	5-3	602208	2-9
055939	4-15	341826	4-7	602243	6-2
058776	4-7, 6-5	342378	4-7	602562	3-7, 6-7
059832	4-9, 4-13	344267	5-3	602689	1-2
061077	5-3	348284	3-3	603314	4-11
064006	4-15, 6-7	348458	3-3	704643	3-3
064345	4-3	360131	3-3	704932	4-9, 4-13
068478	1-1	550071	4-11	705954	3-3, 5-3
073338	4-9	550072	4-11	712372	4-3
076422	4-9	550073	3-3	712927	3-7
077842	4-7	550229	6-2	712976	5-3
078949	3-4	551093	2-3	727172	4-11
080655	4-15	551094	2-3	728550	3-3
086660	3-3, 3-7, 4-9, 4-15, 6-7	600684	5-5	756270	3-3
102125	1-2	600700	5-5	763417	4-3
102707	4-13	600767	2-9	765339	3-3, 4-15
105031	6-5	600900	1-2, 6-7	767954	3-3, 3-7, 4-5, 4-11, 4-15, 6-5, 6-7
107654	1-2	600901	1-2, 6-7	767962	3-3, 4-9, 5-3
107655	6-7	600972	2-9	768259	4-9
		600974	2-9	768515	4-15
		600975	2-9	768523	3-3, 4-3, 4-5, 4-7, 4-15, 6-5, 6-7
		600976	2-9		
		601069	2-3, 6-2		

Part No.	Page No.	Part No.	Page No.	Part No.	Page No.
769166	4-11	783506	6-5	788828	4-11
769299	4-7	783514	6-8	791251	4-3
771030	4-11	783522	6-8	791343	4-3
771139	4-7	783530	6-8	791558	4-3
772079	1-1	783548	6-8	792044	4-5
772806	5-4	783555	6-8	792317	3-3
772814	5-4	783944	4-5	792374	4-9
773556	4-7	784199	6-5	793513	6-2
776310	2-3, 2-5	784223	4-7, 5-3	794206	1-1, 6-7
776476	4-11	784421	4-15	794214	1-1, 6-7
776518	4-11	784603	5-3	794834CE	2-3, 2-5
778365	4-13	784918	4-3	796524	4-3
779157	4-7	785048	4-3	796656	6-5
779165	4-7	785113	4-9	796664	6-5
779306	4-5	785295	4-5	797449	6-5
781294	3-3	785303	5-5	797647	2-3
781567	3-4, 5-3	785337	5-5	797787	1-1
781831	3-3	785345	5-3	797852	1-1
781856	6-5	785766	4-7	797860	1-1
781872	6-5, 6-7	785808	4-11	799429	4-3
781922	4-9	787713	1-1, 4-3	808485	2-3
781930	3-3	788349	4-9	929232CE	1-1
782474	6-5, 6-7	788554	4-9	929299	1-2
782664	4-3	788604	5-3, 5-4		