

Parts catalogue

Transporter

(EXPORT MODEL)

LS300

MODEL	CODE NO.
LS300	80-1923-??-??

CONTENTS

Fig.1	HANDLE -----	1
Fig.2	FRAME -----	3
Fig.3	TRANSMISSION-----	7
Fig.4	TRANSMISSION OUT SIDE -----	9
Fig.5	PLATFORM-----	11
Fig.6	CRAWLER-----	13

OREC CO.,LTD.

Update : February 2004

Fig.1 HANDLE

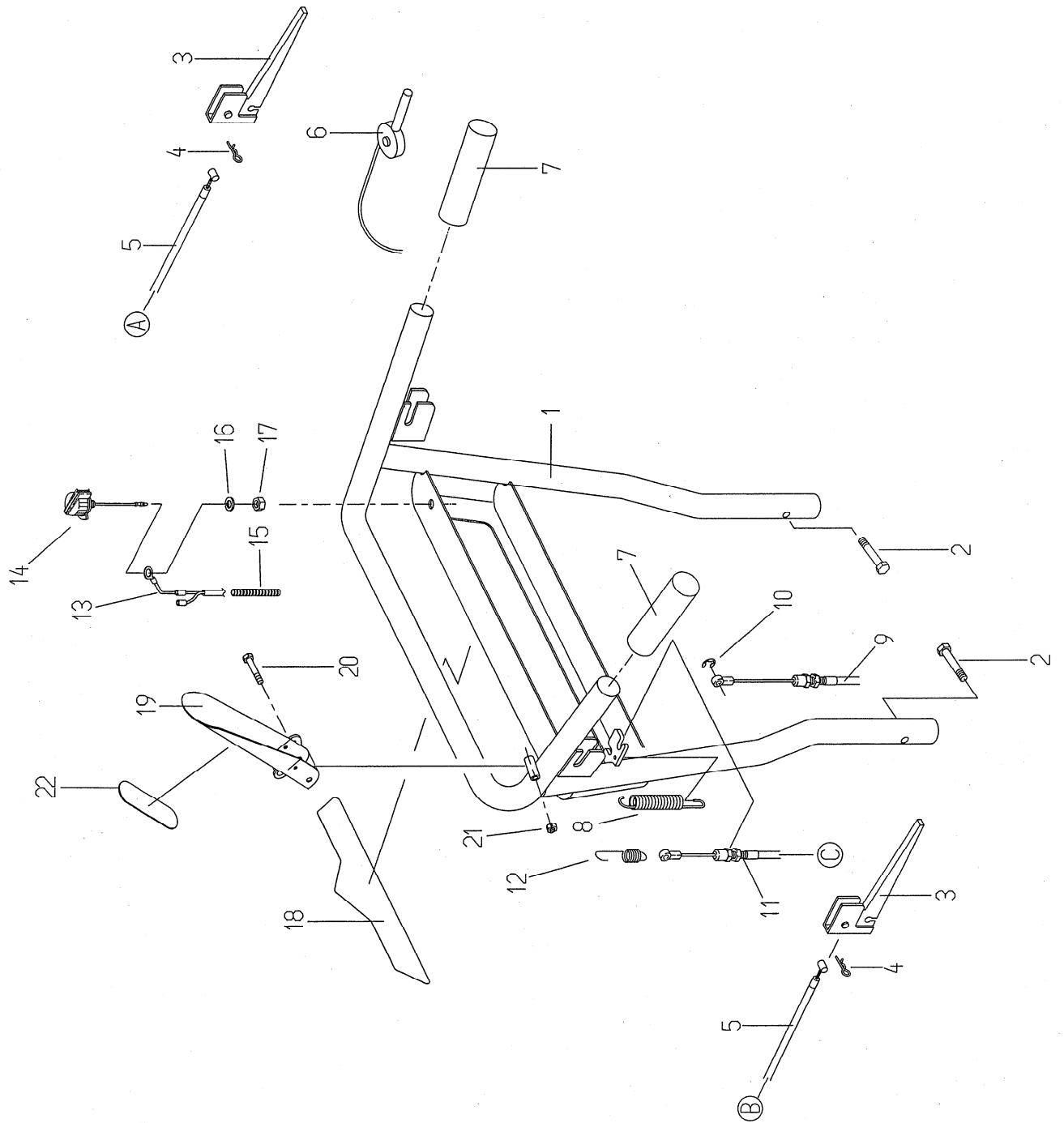


Fig.1 HANDLE

Ref.	Parts No.	Parts Name	Quantity LS300 GM132	Remarks
1	80-1923-A01-10	Handle CMP	1	
2	80-1021-227-00	Handle Fix Bolt M8*45	2	
3	83-1761-457-00	Lever	2	
4	89-2131-080002	Snap Pin 8	2	
5	80-1920-962-00	Side Clutch Wire	2	
6	83-1923-951-10	Throttle Wire	1	
7	83-1560-414-00	Handle Grip 27	2	
8	80-1920-A04-00	Clutch Lever Return Spring	1	
9	80-1923-961-00	Driving Clutch Wire	1	
10	89-2521-000050	E Type Ring 5	1	
11	80-1920-A07-00	Brake Wire	1	
12	80-1920-A05-00	Brake Return Spring	1	
13	80-1923-288-00	Engine Stop Wire Harness	1	
14	80-1260-281-00	Engine Stop Switch	1	
15	80-1920-389-00	Spiral Tube	1	
16	89-1750-080002	Spring Washer 8	1	
17	89-1513-080042	Hexagonal Nut(3 sorts) M8	1	
18	80-1920-901-00	Plate	1	
19	80-1920-A02-00	Driving Clutch Lever	1	
20	89-1113-060452	Hexagonal Bolt(8T) M6*45	1	
21	89-1553-060002	U Nut(with Cap) M6	1	
22	80-1920-A09-00	Label, Driving	1	

***1)Interchangeable**

***2)Serial Number : ~UB99A00161**

***3)Serial Number : UB99D00001~**

***4)Serial Number : ~UB99D00024**

***5)Serial Number : UB99M00025~**

Fig.2 FRAME

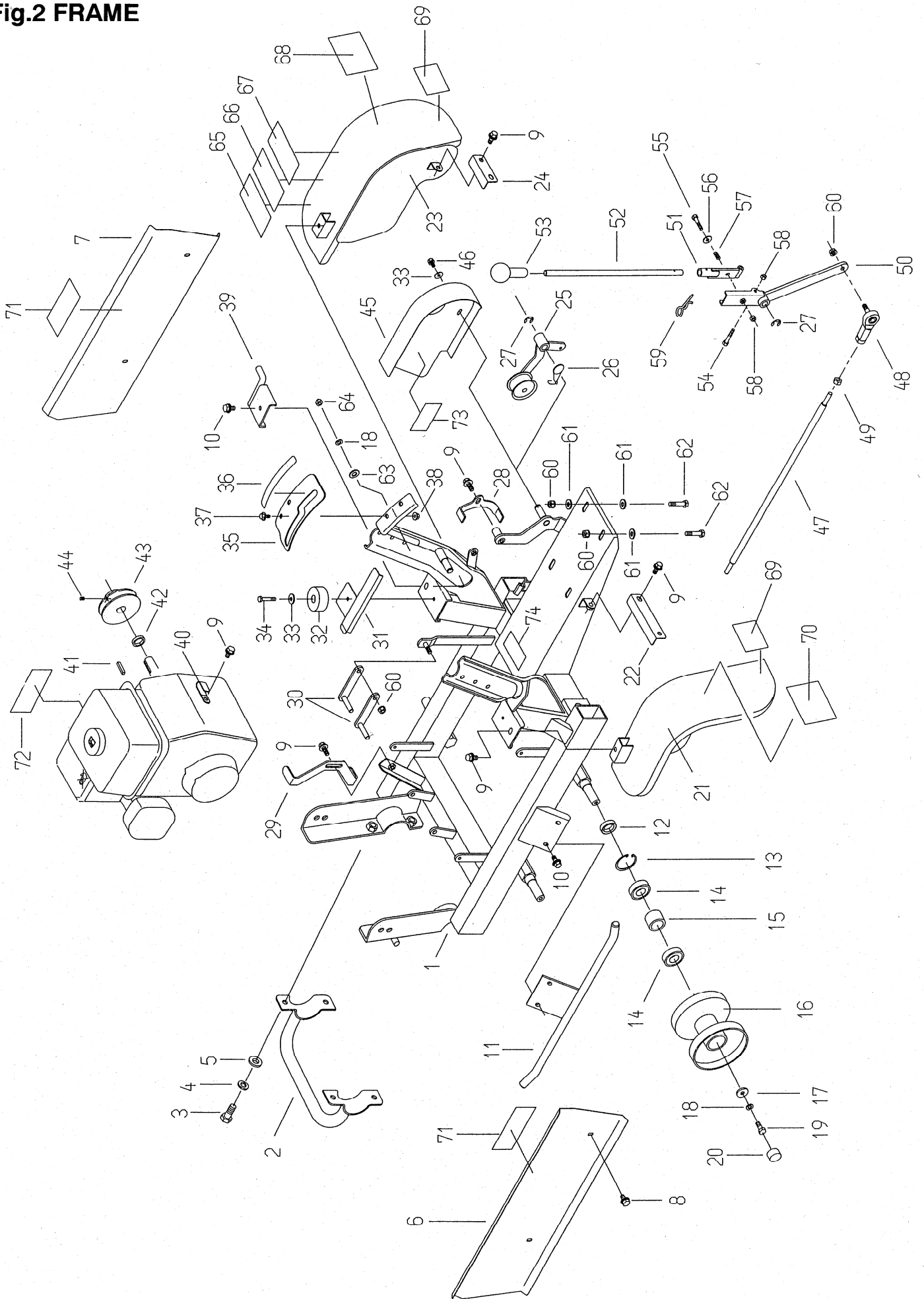


Fig.2 FRAME

Ref.	Parts No.	Parts Name	Quantity LS300 GM132	Remarks
1	80-1923-301-30	Frame	1	
2	80-1920-354-00	Bumper	1	
3	89-1211-100252	Mini Hexagonal Bolt M10*25	4	
4	89-1750-100002	Spring Washer 10	4	
5	89-1714-100002	Flat Washer 10	4	
6	80-1923-752-20	Guard(L)	1	
7	80-1923-751-20	Guard(R)	1	
8	89-1137-060102	Hexagonal Bolt(PW) M6*10	4	
9	89-1233-080162	Mini Hexagonal Bolt(PWSW) M8*16	8	
10	89-1233-080202	Mini Hexagonal Bolt(PWSW) M8*20	5	
11	80-1920-658-00	Stone Guard	2	
12	89-5121-203508	Oil Seal UE 20.35.8	4	
13	89-2512-000350	Snap Ring 35	4	
14	89-3115-060034	Bearing 6003 2RS	8	
15	80-1920-142-00	Spacer(for Turn Wheel)	4	
16	80-1920-421-00	Turn Wheel	4	
17	89-1713-080002	Flat Washer 8	8	
18	89-1750-080002	Spring Washer 8	6	
19	89-1213-080202	Mini Hexagonal Bolt(8T) M8*20	4	
20	83-1415-672-00	Blacking Cover 30	4	
21	80-1923-462-00	Fender (L)	1	
22	80-1923-465-00	Fender Fix Plate (L)	1	
23	80-1923-461-00	Fender (R)	1	
24	80-1923-464-00	Fender Fix Plate (R)	1	
25	80-1923-542-00	Drive Tension Arm	1	
26	80-1923-552-00	Drive Tension Return Spring	1	
27	89-2521-000100	E Type Ring 10	2	
28	80-1923-562-10	Engine Pulley Belt Holder	1	
29	80-1923-577-10	Front Belt Supporter	1	
30	80-1923-563-00	Driving Belt Supporter	2	
31	80-1923-466-10	Support Belt Cover (M)	1	
32	80-1920-306-00	Stopper Rubber B-4	2	
33	89-1711-060002	Flat Washer 6	3	
34	89-1111-060252	Hexagonal Bolt M6*25	2	
35	80-1923-222-20	Change Guide	1	
36	80-1923-911-10	Label, Change	1	
37	89-1137-060122	Hexagonal Bolt(PW) M6*12	2	
38	89-1531-060042	Flange Nut M6	2	
39	80-1923-303-00	Stopper Lock Pin	1	
40	80-1792-988-00	Harness Grip 8	1	
41	89-2150-050350	Key 5*35	1	
42	80-1923-515-00	Engine Pulley Collar	1	
43	80-1923-514-00	Engine Pulley	1	
44	89-1172-060085	Hexagonal Screw M6*8	1	
45	80-1923-463-20	Belt Cover	1	
46	89-1132-060122	Hexagonal Bolt M6*12	2	
47	80-1923-261-00	Shift Rod	1	
48	80-1481-962-00	Link Ball LHSA 8L	1	
49	83-1481-178-00	Hexagonal Nut(L) M8	1	
50	80-1923-263-20	Change Lever Arm	1	
51	80-1923-262-10	Change Lever	1	
52	80-1923-265-00	Lever	1	
53	83-1920-731-00	Lever Grip Rubber 12	1	
54	89-1113-060402	Hexagonal Bolt(8T) M6*40	1	
55	89-1113-060352	Hexagonal Bolt(8T) M6*35	1	
56	89-1713-060002	Flat Washer 6(inch)	1	

Fig.2 FRAME

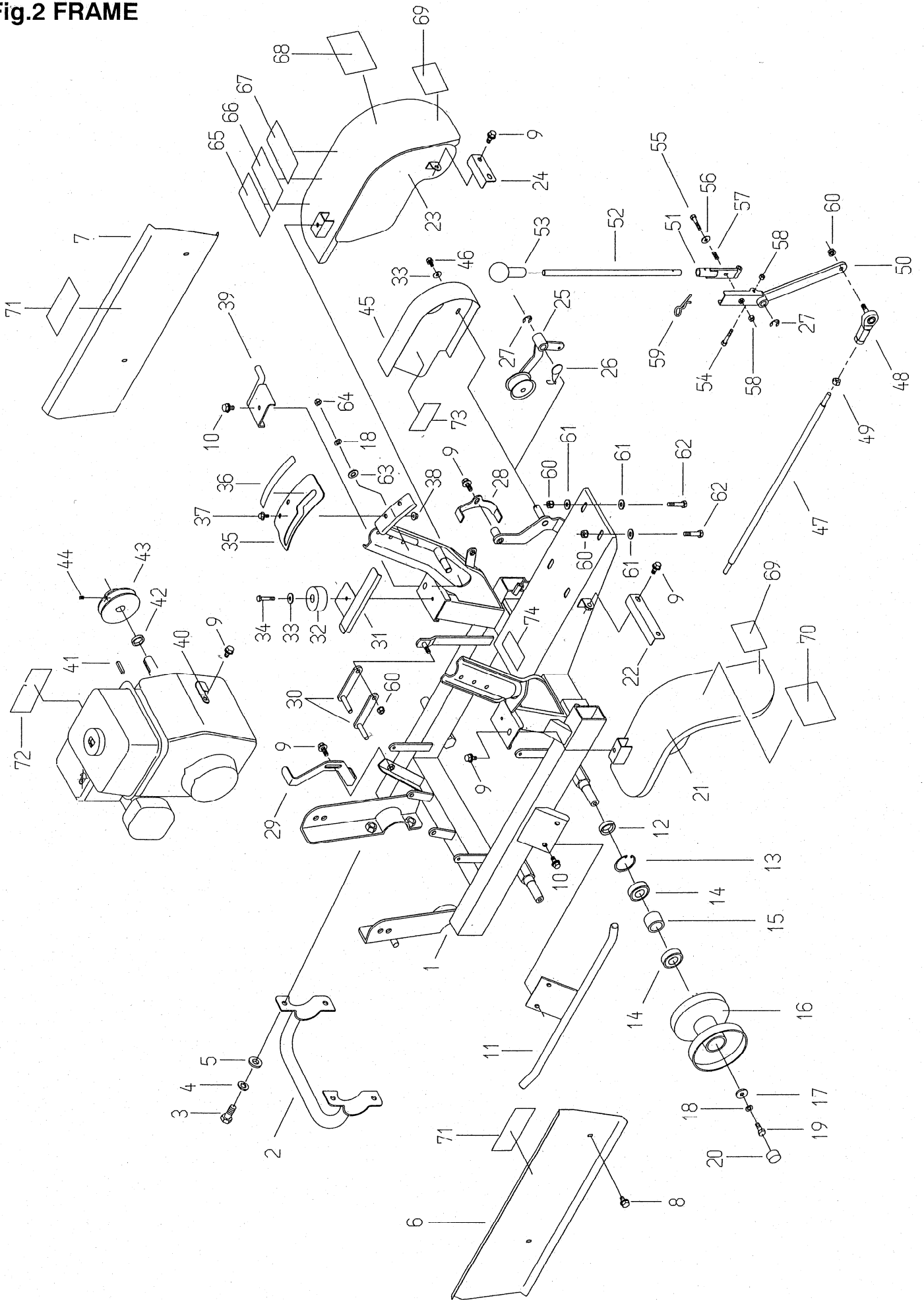


Fig.2 FRAME

Ref.	Parts No.	Parts Name	Quantity LS300 GM132	Remarks
57	80-1020-263-00	Control Shaft Spring	1	
58	89-1551-060002	Hexagonal U Nut M6	2	
59	89-2131-160002	Snap Pin 16	1	
60	89-1543-080002	Mini Hexagonal Nut(SW) M8	6	
61	89-1713-080002	Flat Washer 8(inch)	6	
62	89-1211-080352	Mini Hexagonal Bolt M8*35	4	
63	89-1713-080003	Flat Washer 8(inch)	2	
64	89-1671-080043	Mini Hexagonal Bag Nut M8	2	
65	80-1920-937-00	Label, Caution	1	
66	83-1260-908-00	Label, Caution	1	
67	80-1920-939-00	Label, Caution	1	
68	80-1923-902-00	LS Label	1	
69	80-1484-907-00	Reflection Seat(Yellow)	2	
70	80-1920-903-00	LS Label	1	
71	80-1488-928-00	Label, Caution	2	
72	83-1415-909-00	Label, Caution	1	
73	80-1923-920-00	Label, Belt Size	1	
74	Not for sale	Serial Number Plate	1	

Fig.3 TRANSMISSION

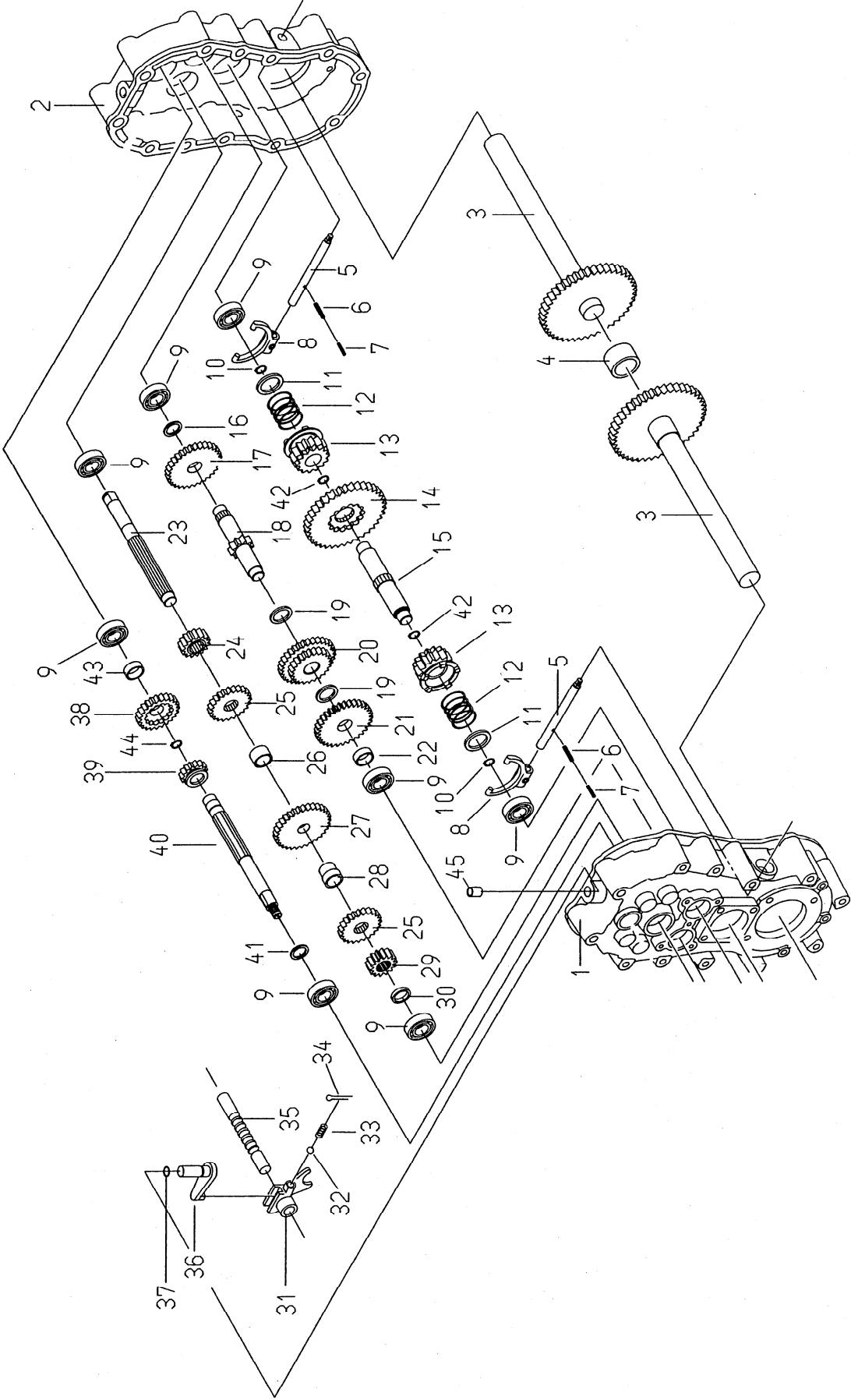


Fig.3 TRANSMISSION

Ref.	Parts No.	Parts Name	Quantity		Remarks
			LS300	GM132	
	80-1923-100-00	Transmission ASSY	1		Note1
1	80-1920-103-00	Transmission Case (R)	1		
2	80-1575-101-10	Transmission Case (L)	1		
3	80-1920-146-00	Axle	2		
4	80-1920-147-00	Axle Collar	1		
5	80-1425-112-00	Drive Clutch Fork Shaft	2		
6	89-2111-050020	Spring Pin 5*20	1		
7	89-2111-030020	Spring Pin 3*20	1		
8	80-1415-114-00	Side Clutch Fork	2		
9	89-3111-062024	Bearing 6202	8		
10	89-2511-000150	Snap Ring 15	3		
11	83-1633-362-10	Thrust Washer 15*30*1.2	2		
12	80-1575-162-00	Side Clutch Spring	2		
13	80-1575-141-00	Side Clutch Gear 14T	2		
14	80-1575-142-00	Side Clutch Gear 38T	1		
15	80-1575-140-00	Side Clutch Shaft	1		
16	83-1017-365-00	Thrust Washer 17*24*1.0	1		
17	80-1920-140-00	3 Shaft Gear 31T	1		
18	80-1923-138-00	3 Shaft	1		
19	83-1830-368-00	Thrust Washer 18*26*1.0	2		
20	80-1920-139-00	Back Gear CMP	1		
21	80-1923-140-00	3 Shaft Gear 32T	1		
22	80-1923-141-00	Collar D	1		
23	80-1923-127-00	2 Shaft	1		
24	80-1920-132-00	2 Shaft Gear 15T	1		
25	80-1920-133-00	2 Shaft Gear 23T	2		
26	80-1920-130-00	Collar C	1		
27	80-1920-128-00	2 Shaft Gear 32T	1		
28	80-1920-131-00	Collar B	1		
29	80-1923-129-00	2 Shaft Gear 14T	1		
30	80-1923-134-00	Collar C	1		
31	80-1575-108-10	1 Shaft Shift Fork	1		
32	89-3410-075000	Steel Ball 7.5	1		
33	80-1310-138-00	Spring 1.4	1		
34	89-2120-200202	Split Pin 2*20	1		
35	80-1923-107-00	Shift Fork Shaft	1		
36	80-1920-106-00	Swing Arm	1		
37	89-5221-009000	O Ring 9	1		
38	80-1920-121-00	Top Gear 23T	1		
39	80-1575-120-10	1 Shaft Shift Gear 14T	1		
40	80-1920-118-10	Main Shaft	1		
41	83-1020-361-00	Thrust Washer 15*24*1.0	1		
42	89-2511-000200	Snap Ring 20	2		
43	80-1920-119-00	Collar D	1		
44	89-2511-000160	Snap Ring (S16)	1		
45	89-3510-012200	DU Bush 12.20	1		

M E M O

Note 1: Transmission ASSY consists from parts 1 to 45(this page)
and 1 to 36(next page).

Fig.4 TRANSMISSION OUT SIDE

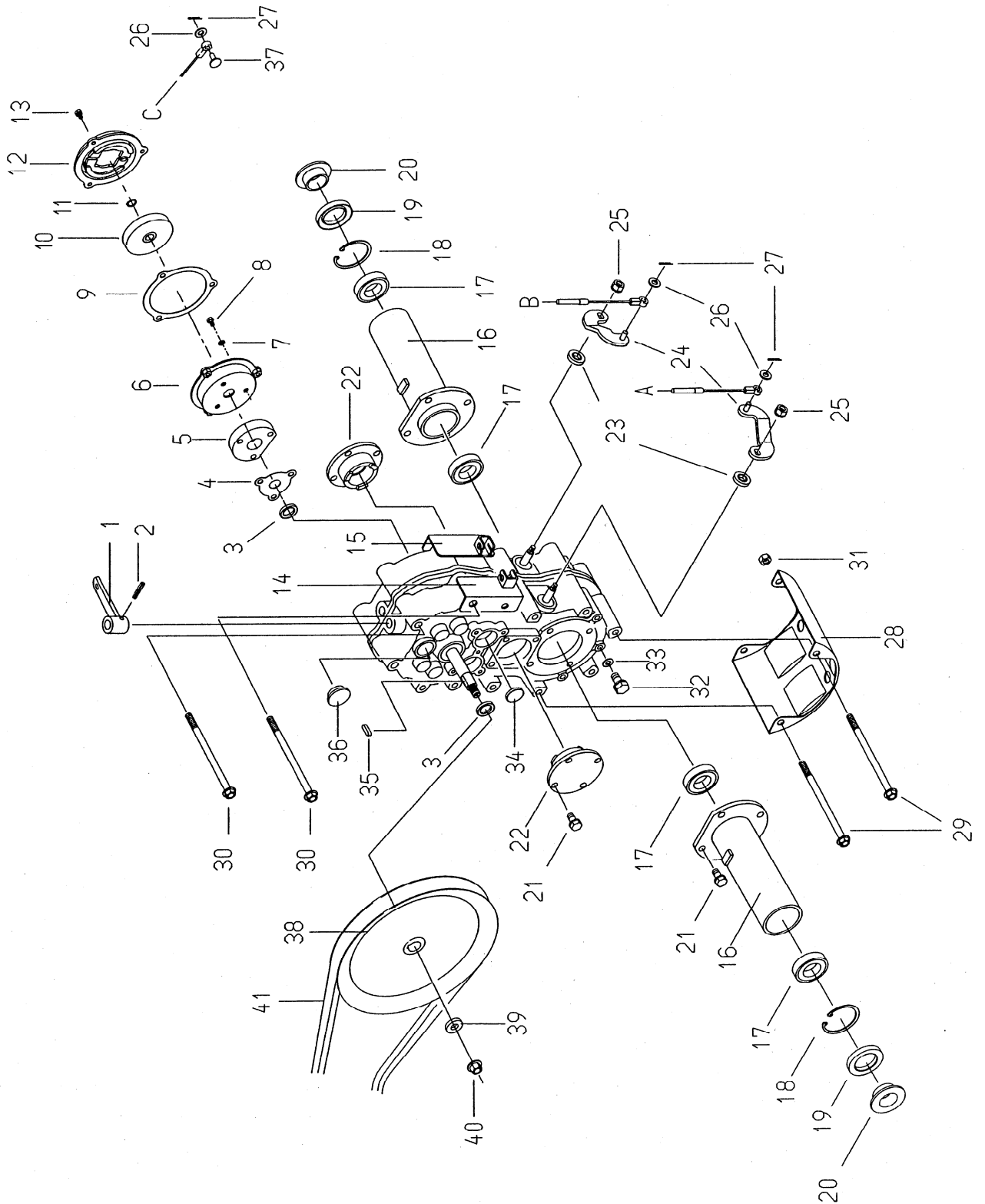


Fig.4 TRANSMISSION OUT SIDE

Ref.	Parts No.	Parts Name	Quantity LS300 GM132	Remarks
1	80-1923-264-20	Change Arm	1	
2	89-2111-050020	Spring Pin 5*20	1	
3	89-5121-153007	Oil Seal UE.15.30.7	2	
4	85-1445-317-00	Packing	1	
5	80-1575-281-00	Brake Cover Spacer	1	*4)
	80-1920-313-00	Brake Cover Spacer	1	*5)
6	80-1614-312-00	Brake Cover CMP	1	
7	89-1750-060002	Spring Washer 6	3	
8	89-1111-060252	Hexagonal Bolt M6*25	3	*4)
	89-1111-060302	Hexagonal Bolt M6*30	3	*5)
9	85-1445-318-00	Packing	1	
10	85-1445-313-00	Brake Drum	1	
11	89-2511-000130	Snap Ring 13	1	
12	85-1445-311-00	Brake(Main Body)	1	
13	89-1132-060122	Hexagonal Bolt(SW) M6*12	3	
14	80-1920-198-00	Side Clutch Wire Receiver (R)	1	
15	80-1920-197-00	Side Clutch Wire Receiver (L)	1	
16	80-1920-145-00	Axle BB Case	2	
17	89-3115-060054	Bearing 6005 2RS	4	*2)
	89-3111-060054	Bearing 6005	4	*1) *3)
18	89-2512-000470	Snap Ring 47	2	
19	89-5121-254210	Oil Seal UE 25.42.10	2	
20	83-1415-663-00	Adopter AP 30.47.7	2	
21	89-1232-080162	Mini Hexagonal Bolt(SW) M8*16	8	
	83-1415-127-00	Seal Bolt(SW) M8*20	8	*1)
22	80-1575-152-10	Side Clutch Shaft BB Case	2	
23	89-5121-122207	Oil Seal UE 12.22.7	2	
24	80-1920-153-00	Side Clutch Arm	2	
25	89-1543-080002	Mini Hexagonal Bolt(SW) M8	2	
26	89-1711-060002	Flat Washer 6	3	
27	89-2120-200152	Split Pin 2*15	3	
28	80-1920-117-00	Transmission Guard	1	
29	89-1251-081453	Flange Bolt M8*145	6	
30	89-1251-081203	Flange Bolt M8*120	7	
31	83-1484-255-00	Rock Nut ZUF M8	11	
32	89-1252-100123	Flange Bolt(slender) M10*12	1	
33	83-1020-349-00	Copper Packing 10.5*18*1.6	1	
34	83-1415-672-00	Blind Cap 30	4	
35	89-2150-050180	Key 5*18	1	
36	83-1110-683-00	Oil Cap 20	2	
	83-1517-683-00	Oil Cap 20	2	*1)
37	89-2181-060162	Flat Head Pin 6*16	1	
38	80-1923-512-00	Transmission Pulley	1	
39	89-1711-100002	Flat Washer 10	1	
40	89-1531-100042	Flange Mini Hexagonal Nut M10	1	
41	89-6122-007601	V Belt SA-76	1	

***1)Interchangeable**

***2)Serial Number : ~UB99A00161**

***3)Serial Number : UB99D00001~**

***4)Serial Number : ~UB99D00024**

***5)Serial Number : UB99M00025~**

Fig.5 PLATFORM

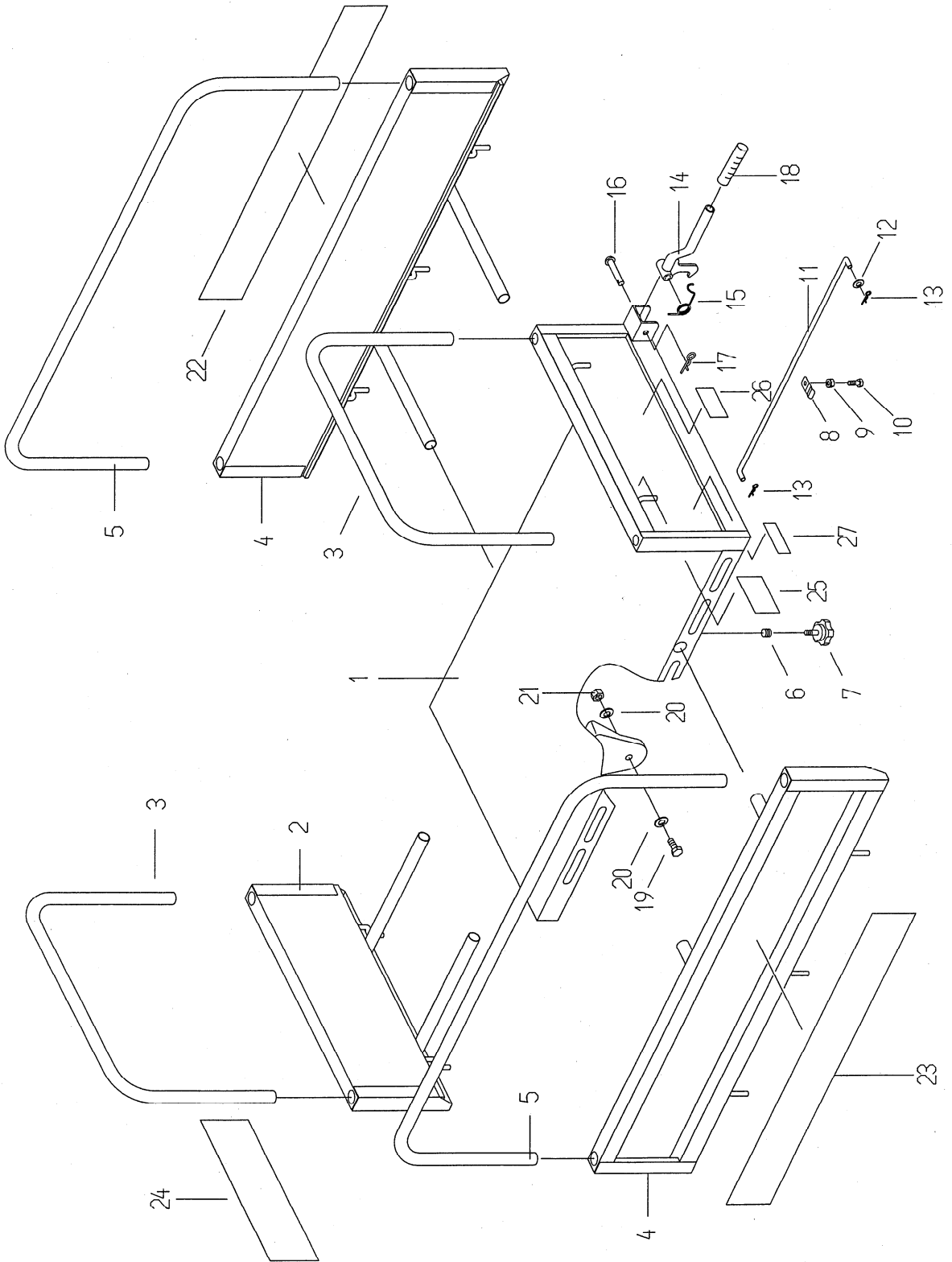


Fig.5 PLATFORM

Ref.	Parts No.	Parts Name	Quantity LS300 GM132	Remarks
1	80-1923-723-10	Platform	1	
	80-1923-723-20	Platform	1	*1)
2	80-1923-725-00	Front Frame for Platform	1	
3	80-1923-735-10	Front Pipe for Platform	2	
4	80-1923-724-00	Side Frame for Platform	2	
5	80-1923-734-00	Side Pipe for Platform	2	
6	80-1920-717-00	Knob Spring for Platform	6	
7	83-1920-102-00	Knob Bolt 8*20	6	
8	80-1920-674-00	Fix Spring	1	
9	89-1543-080002	Mini Hexagonal Nut(SW) M8	1	
10	89-1211-080202	Mini Hexagonal Bolt M8*20	1	
11	80-1920-711-00	Platform Support Bar	1	
12	89-1711-080002	Flat Washer 8	1	
13	89-2131-080002	Snap Pin 8	2	
14	80-1924-706-00	Platform Stopper	1	
15	80-1920-716-00	Platform Lock Spring	1	
16	83-1210-162-00	Round Head Pin 10*55	1	
17	89-2131-100002	Snap Pin 10	1	
18	83-1654-433-00	Lock Lever Grip	1	
19	89-1113-120352	Hexagonal Bolt(8T) M12*35	2	
20	89-1711-120002	Flat Washer 12	2	
21	89-1551-120002	U Nut M12	2	
22	80-1920-905-00	LS Label (R)	1	
23	80-1920-904-00	LS Label (L)	1	
24	80-1920-906-00	Label, OREC	1	
25	80-1484-A47-00	Label, Caution	1	
26	80-1920-936-00	Label, Caution	1	
27	80-1923-A03-00	Label, Loading Capacity	1	

***1)Interchangeable**

***2)Serial Number : ~UB99A00161**

***3)Serial Number : UB99D00001~**

***4)Serial Number : ~UB99D00024**

***5)Serial Number : UB99M00025~**

Fig.6 CRAWLER

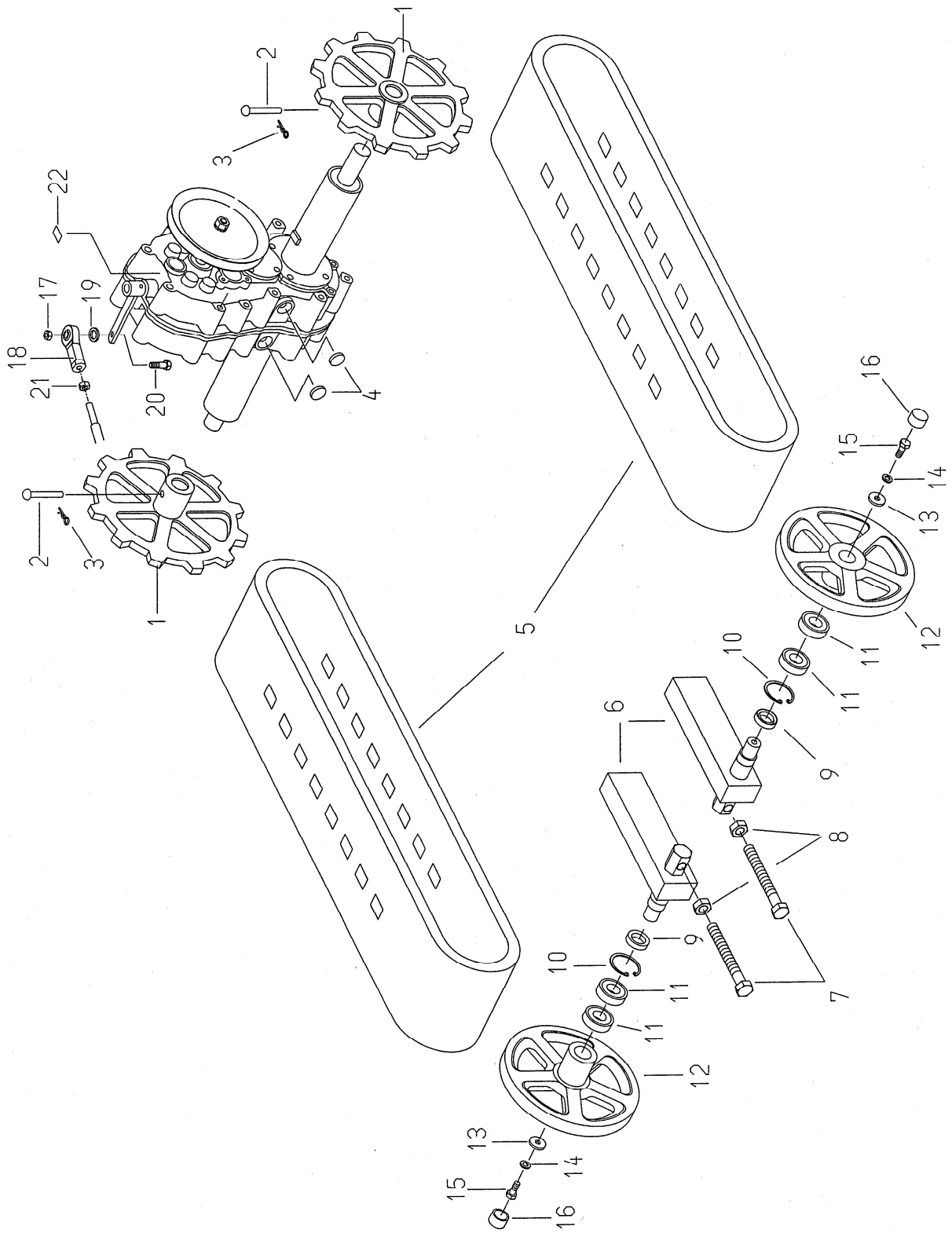


Fig.6 CRAWLER

Ref.	Parts No.	Parts Name	Quantity LS300 GM132	Remarks
1	80-1920-411-00	Drive Sprocket	2	
2	83-1210-162-00	Round Head Pin 10*55	2	
3	89-2131-100002	Snap Pin 10	2	
4	83-1415-671-00	Blind Cap 22	2	
5	80-1920-401-00	Rubber Crawler 160W*60P*35L	2	
6	80-1923-414-00	Induction Ring Attachment	2	
7	89-1111-141302	Hexagonal Bolt M14*130	2	
8	89-1511-140042	Hexagonal Nut M14	2	
9	89-5121-254210	Oil Seal UE 25.42.10	2	
10	89-2512-000420	Snap Ring 42	2	
11	89-3115-060044	Bearing 6004 2RS	4	
12	80-1920-412-00	Idle Roller	2	
13	89-1713-080002	Flat Washer 8	2	
14	89-1750-080002	Spring Washer 8	2	
15	89-1213-080202	Mini Hexagonal Bolt(8T) M8*20	2	
16	83-1415-672-00	Blind Cap 30	2	
17	89-1561-080002	Mini Hexagonal U Nut M8	1	
18	80-1487-963-00	Rod End HS8	1	
19	83-1020-395-00	Shim Washe 8*12*0.8	1	
20	89-1213-080252	Mini Hexagonal Bolt(8T) M8*25	1	
21	89-1611-080042	Mini Hexagonal Nut M8	1	
22	83-1712-923-00	Label, Oil Quantity 1.6	1	