



OREC

# PARTS CATALOG

## G-TEC MOWER

### GR702

MODEL  
GR702

PARTS CODE  
80-1032-△△△-00

#### 《CONTENTS》

FIG 1	HANDLE-----	1
FIG 2	TRANSMISSION-----	3
FIG 3	GEAR BOX-----	5
FIG 4	SAFETY COVER-----	7
FIG 5	FRAME-----	11
FIG 6	FRONT & REAR WHEELS-----	13

JUNE 1999

TECHNO GREEN LTD.

FIG. 1 HANDLE

GR702

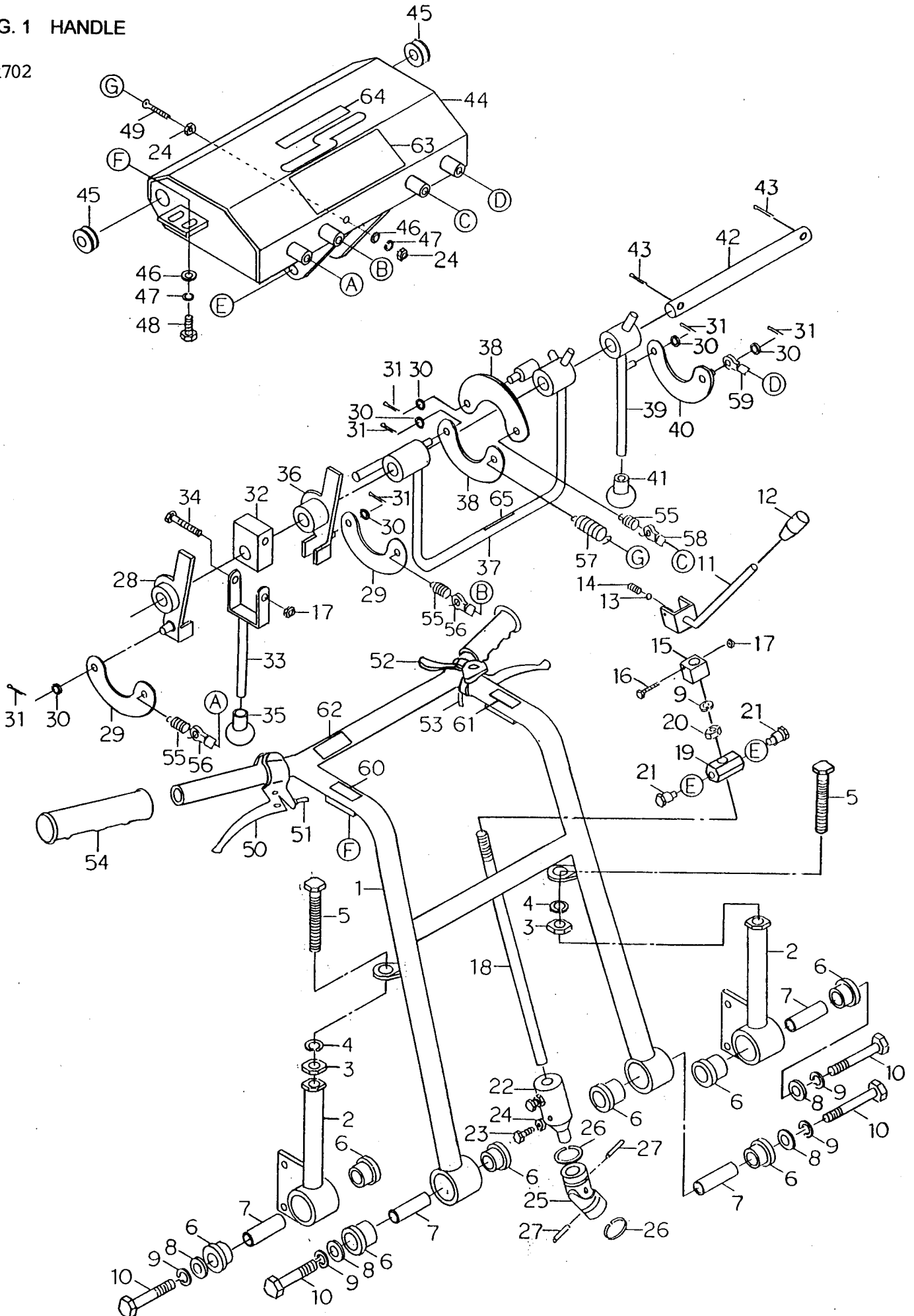


FIG. 1 HANDLE

Ref.	Parts No.	Parts Name	Qty	Remarks
1	80-1032-221-00	Handle	1	
2	80-1032-225-00	Handle Adjust Stay	2	
3	89-1511-140042	Hexagonal Nut M14	2	
4	89-1750-140002	Spring Washer 14	2	
5	89-1111-140902	Hexagonal Bolt M14x90	2	
6	80-1030-218-00	Rubber for Preventing Handle Vibration	8	
7	80-1030-222-00	Inner Collar for Handle	4	
8	89-1711-120002	Flat Washer 12	4	
9	89-1750-120002	Spring Washer 12	5	
10	89-1111-120602	Hexagonal Bolt M12x60	4	
11	80-1032-263-00	Change Lever	1	
12	83-1711-426-00	Lever Grip 12	1	
13	89-3410-080000	Steel Ball 8	1	
14	80-1210-161-00	Spring	1	1.4
15	80-1032-262-00	Change Lever Setting Boss	1	
16	89-1111-060452	Hexagonal Bolt M6x45	1	
17	89-1551-060002	U Nut M6	2	
18	80-1032-261-00	Change Rod	1	
19	80-1030-264-00	Change Lever Boss	1	
20	89-1511-120042	Hexagonal Nut M12	1	
21	80-1030-269-00	Change Lever Boss Setting Bolt	2	
22	80-1030-192-00	Change Lever Joint	1	
23	89-1113-080202	Hexagonal Bolt(8T) M8x20	2	
24	89-1511-080042	Hexagonal Nut M8	4	
25-27	80-1030-191-00	Joint ASSY(NC-12)	1	
28	80-1032-243-00	Tension Lever Receiver(left)	1	
29	80-1751-245-00	Double Tension Joint	2	
30	89-1711-060002	Flat Washer 6	6	
31	89-2120-200152	Split Pin 2x15	6	
32	80-1751-242-00	Double Tension Lever Boss	1	
33	80-1032-241-00	Drive Clutch Lever	1	
34	89-1111-060402	Hexagonal Bolt M6x40	1	
35	83-1032-431-00	Lever Grip(black, round) 10	1	
36	80-1032-244-00	Tension Lever Receiver(right)	1	
37	80-1032-247-00	Brake Lever	1	
38	80-1032-234-00	Brake Joint	2	
39	80-1032-251-00	Cutting Clutch Lever	1	
40	80-1032-255-00	Cutting Clutch Lever Joint	1	
41	83-1032-432-00	Lever Grip(red, round) 10	1	
42	80-1032-233-00	Tension Lever Shaft	1	
43	89-2120-250202	Split Pin 2.5x20	2	
44	80-1032-231-10	Tension Lever Case	1	
45	83-1032-669-00	Gromet 25.35.6	2	
46	89-1711-080002	Flat Washer 8	5	
47	89-1750-080002	Spring Washer 8	5	
48	89-1111-080162	Hexagonal Bolt M8x16	4	
49	80-1633-231-00	Brake Spring Adjuster	1	
50	83-1210-457-00	Lever 3101	2	
51	83-1032-962-00	Side Clutch Wire	2	
52	83-1560-463-00	Throttle Lever	1	
53	83-1030-951-00	Throttle Wire	1	
54	83-1560-414-00	Handle Grip 27	2	
55	80-1751-246-00	Spring for Double Tension	3	
56	83-1032-932-00	Drive Clutch Wire	2	
57	80-1032-248-00	Brake Return Spring	1	
58	83-1032-938-00	Brake Wire	1	
59	83-1032-941-00	Cutting Clutch Wire	1	
60	80-1560-914-00	Label, Drive	1	
61	80-1560-915-00	Label, Cutting Clutch	1	

62	80-1575-912-00	Label, Sub-Change	1	
63	80-1020-902-00	Label, OREC	1	
64	80-1560-911-00	Label, Change	1	
65	80-1050-935-00	Label, Parking	1	

FIG. 2 TRANSMISSION

GR702

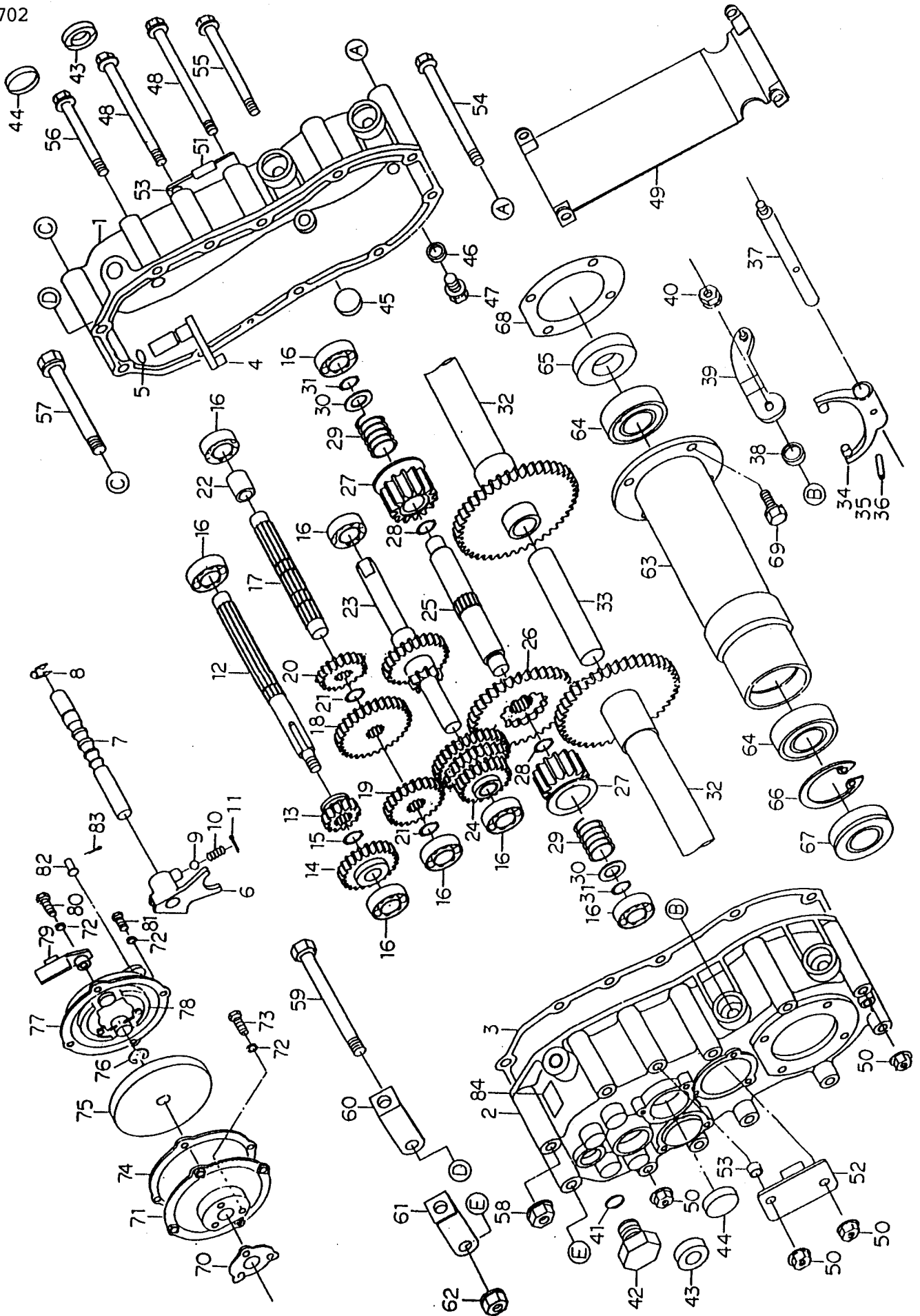


FIG. 2 TRANSMISSION

Ref.	Parts No.	Parts Name	Qty	Remarks
1-84	80-1032-100-00	Transmission ASSY	1	
1	80-1032-101-00	Transmission Case(L)	1	
2	80-1032-103-00	Transmission Case(R)	1	
3	80-1415-105-00	Transmission Case PK	1	
4	80-1050-106-00	Main Change Swing Arm	1	
5	89-5221-009000	O Ring P9	1	
6	80-1575-108-10	1st Shaft Shift Fork	1	
7	80-1575-107-00	Main Change Shift Fork Shaft	1	
8	89-2521-000100	E-type Ring 10	1	
9	89-3410-075000	Steel Ball 7.5	2	
10	80-1310-138-00	Spring for Ball Pushing 1.4	1	
11	89-2120-200202	Split Pin 2x20	1	
12	80-1032-118-00	1st Shaft	1	
13	80-1575-120-00	1st Shaft Shift Gear 14T	1	
14	80-1575-121-00	Top Gear 24T	1	
15	89-2511-000160	Snap Ring 16	1	
16	89-3111-062024	Bearing 6202	8	
17	80-1575-127-20	2nd Shaft	1	
18	80-1575-128-10	2nd Shaft Gear 32T	1	
19	80-1032-128-00	2nd Shaft Gear 20T	1	
20	80-1032-129-00	2nd Shaft Gear 16T	1	
21	89-2511-000170	Snap Ring 17	2	
22	80-1032-126-00	2nd Shaft Collar	1	
23	80-1032-134-00	3rd Shaft	1	
24	80-1032-136-00	3rd Shaft Low Gear	1	with Bush 1615(2 pces)
25	80-1032-140-00	Side Clutch Shaft	1	
26	80-1575-142-00	Side Clutch Gear 38T	1	
27	80-1032-141-00	Side Clutch Gear 14T	2	
28	89-2511-000200	Snap Ring 20	2	
29	80-1575-162-00	Side Clutch Spring	2	
30	83-1633-362-10	Thrust Washer 15x30x1.2	2	
31	89-2511-000150	Snap Ring 15	2	
32	80-1032-146-00	Axle	2	
33	80-1450-150-00	Axle Pin 22-95	1	
34	80-1415-114-00	Side Clutch Fork	2	
35	89-2111-050020	Spring Pin 5x20	2	
36	89-2111-030020	Spring Pin 3x20	2	
37	80-1425-112-00	Side Clutch Fork Shaft	2	
38	89-5121-122207	Oil Seal UE12.22.7	2	
39	80-1032-153-00	Side Clutch Arm	2	
40	89-1541-080002	Hexagonal Nut(SW) M8	2	
41	89-5221-018000	O Ring P18	2	
42	80-1032-119-00	Oil Cock M22	2	
43	89-5121-153007	Oil Seal UE15.30.7	2	
44	83-1415-672-00	Blacking Cover 30	2	
45	83-1415-671-00	Blacking Cover 22	2	
46	89-5230-120000	Seal Washer 12	1	
47	80-1032-648-00	Oil Discharge Bolt M12x1.5	1	
48	89-1251-081453	Flange Mini Bolt M8x145	3	
49	80-1032-107-00	Transmission Guard	1	
50	89-1555-080003	Flange U Nut M8	10	
51	80-1032-105-00	Side Clutch Wire Holder(L)	1	
52	80-1032-106-00	Side Clutch Wire Holder(R)	1	
53	80-1415-198-00	Collar	2	
54	89-1251-081403	Flange Mini Bolt M8x140	4	
55	89-1251-081203	Flange Mini Bolt M8x120	1	
56	83-1415-115-00	Flange Mini Bolt M8x112	2	
57	89-1251-101152	Flange Mini Bolt M10x115	1	
58	89-1555-100003	Flange U Nut M10	1	

59	89-1111-101302	Hexagonal Bolt M10x130	1	
60	80-1032-113-00	Transmission Hunger(L)	1	
61	80-1032-114-00	Transmission Hunger(R)	1	
62	89-1541-100002	Hexagonal Nut(SW) M10	1	
63	80-1032-156-00	Axle BB Case	2	
64	89-3115-060064	Bearing 6005 2RS	4	
65	89-5121-304707	Oil Seal UE30.47.7	2	
66	89-2512-000470	Snap Ring 47	2	
67	83-1415-663-00	Oil Seal AP30.47.7	2	with Adapter
68	80-1415-157-00	Axle Packing	2	
69	89-1132-080182	Hexagonal Bolt(SW) M8x18	8	
70	85-1445-317-00	Packing(small)	1	
71	80-1575-281-00	Brake Cover	1	
72	89-1750-060002	Spring Washer 6	7	
73	89-1111-060252	Hexagonal Bolt M6x25	3	
74-78	80-1032-280-00	Brake ASSY	1	
74	80-1030-288-00	Packing(large)	1	
75	80-1030-282-00	Brake Drum	1	
76	89-2521-000120	E-type Ring 12	1	
77	80-1030-271-00	Brake Cap ASSY	1	
78	80-1030-284-00	Brake Shoe	2	
79	80-1575-291-00	Wire Holder	1	
80	89-1111-060352	Hexagonal Bolt M6x35	1	
81	89-1111-060142	Hexagonal Bolt M6x14	3	
82	89-2181-060162	Flat Head Pin 6x16	1	
83	89-2120-200152	Split Pin 2x15	1	
84	80-1032-909-00	Label, Transmission ASSY	1	

FIG. 3 GEAR BOX

GR702

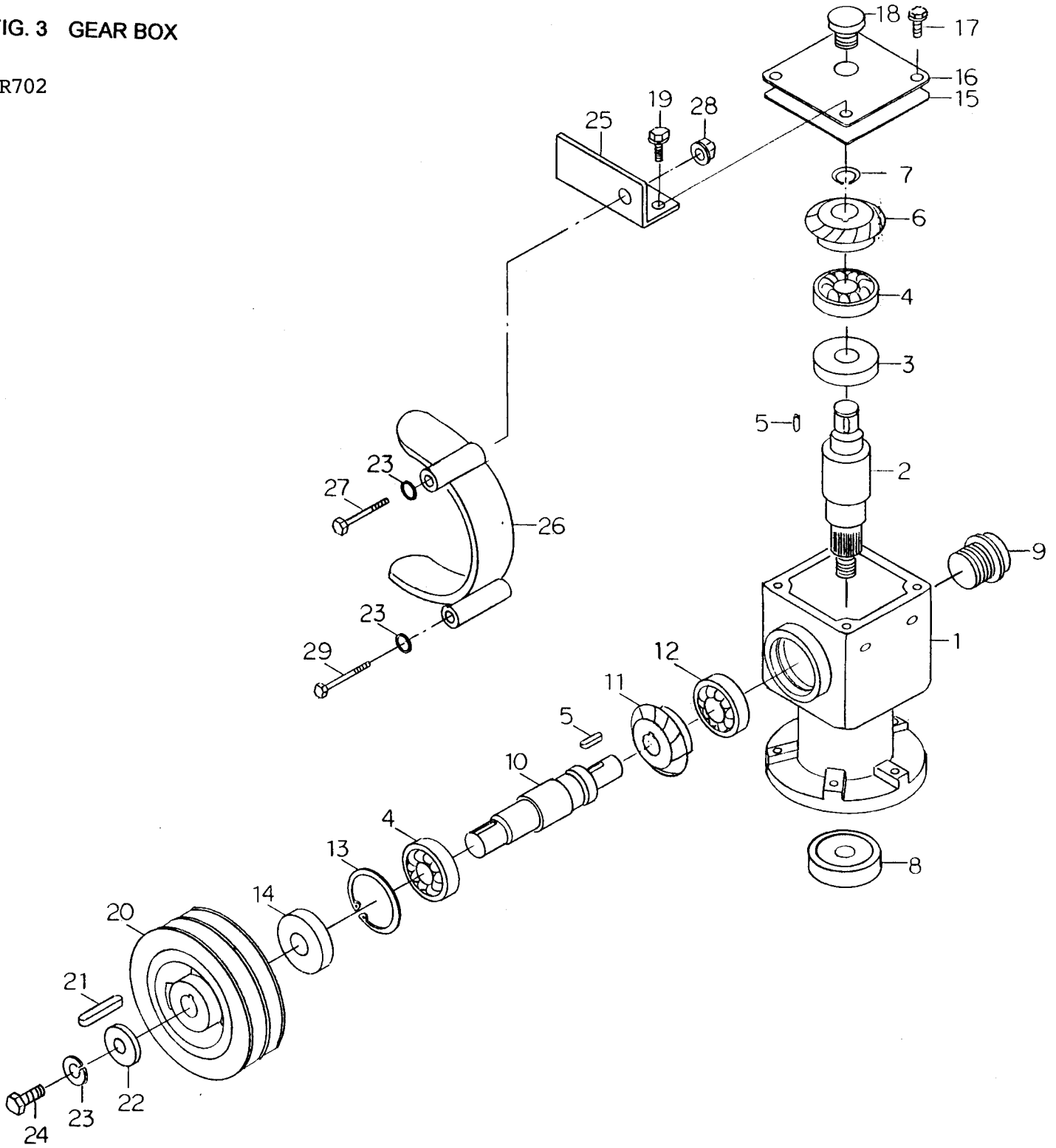




FIG. 3 GEAR BOX

Ref.	Parts No.	Parts Name	Qty	Remarks
1-19	80-1032-600-00	Gear Box ASSY	1	
1	80-1032-601-00	Gear Box	1	
2	80-1032-617-00	Vertical Shaft	1	
3	89-5121-354808	Oil Seal UE35.48.8	1	
4	89-3111-062054	Bearing 6205	2	
5	89-2150-050250	Key 5x25	2	
6	80-1415-622-00	Bevel Gear(R) 20T	1	
7	89-2511-000200	Snap Ring 20	1	
8	89-3115-062064	Bearing 6206 2RS	1	
9	83-1032-689-00	Oil Gauge M28	1	KMS-28-A
10	80-1032-616-00	Horizontal Shaft	1	
11	80-1415-618-00	Bevel Gear(L) 20T	1	
12	89-3111-063044	Bearing 6304	1	
13	89-2512-000520	Snap Ring 52	1	
14	89-5121-255208	Oil Seal UE25.52.8	1	
15	84-1713-607-00	Packing	1	
16	84-1713-606-00	Gear Box Cover	1	
17	89-1135-080162	Hexagonal Bolt(SW) M8x16	2	
18	83-1210-684-00	Oil Cap 1/2"	1	KRM-A2
19	89-1135-080202	Hexagonal Bolt(SW) M8x20	2	
20	80-1030-571-00	Gear Box Pulley	1	
21	89-2151-070400	Key 7x40	1	
22	83-1210-313-00	Washer 8x32x3.2	1	
23	89-1750-080002	Spring Washer 8	3	
24	89-1113-080252	Hexagonal Bolt(8T) M8x25	1	
25	80-1032-574-00	Belt Hold Plate	1	
26	80-1032-575-00	Gear Box Belt Holder	1	
27	89-1111-080602	Hexagonal Bolt M8x60	1	
28	89-1541-080042	Hexagonal Nut(SW) M8	1	
29	89-1111-080552	Hexagonal Bolt M8x55	1	

FIG. 4 SAFETY COVER

GR702

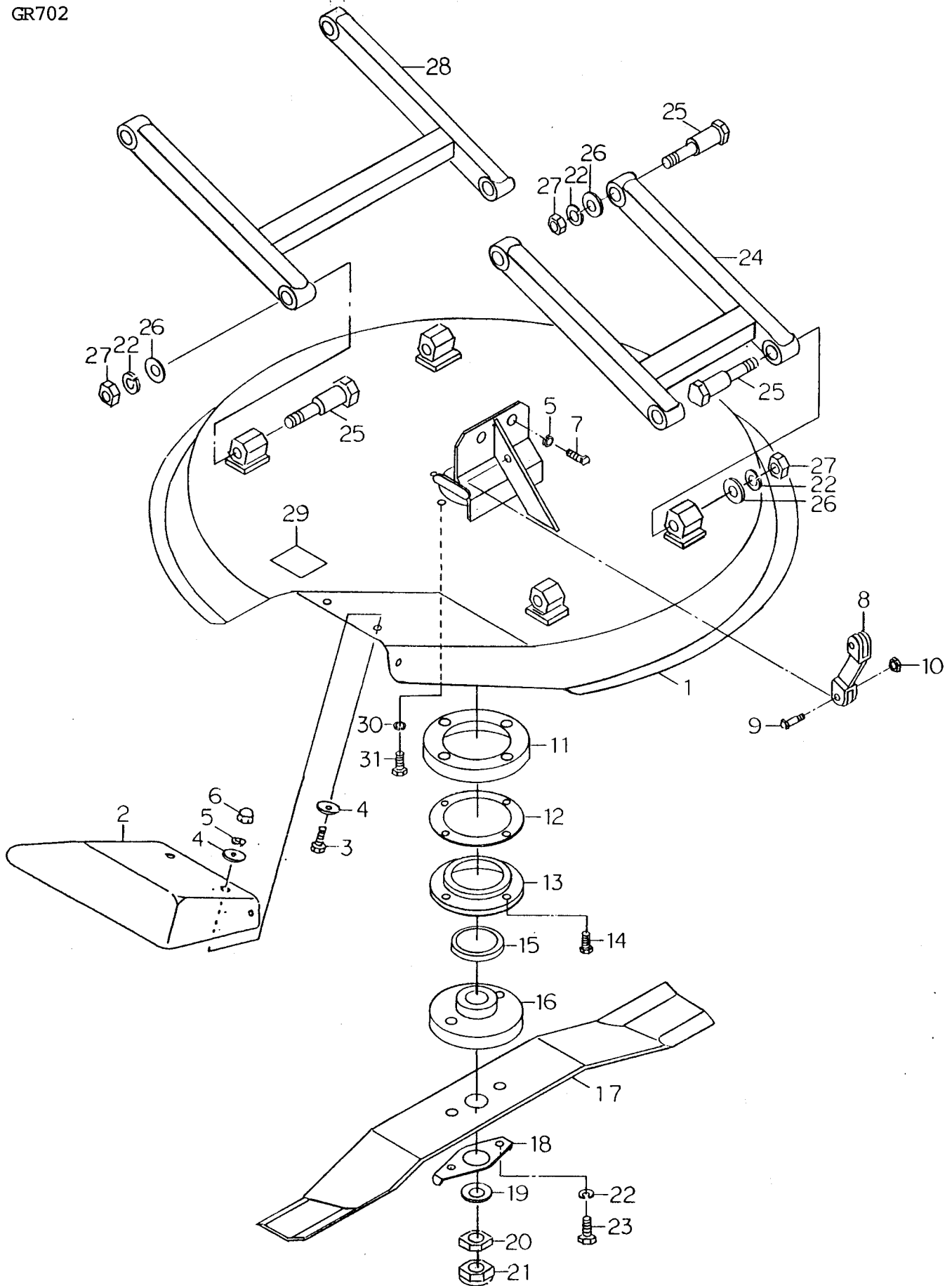


FIG. 4 SAFETY COVER

Ref.	Parts No.	Parts Name	Qty	Remarks
1	80-1032-731-00	Safety Cover	1	
2	80-1030-753-00	Side Cover	1	
3	89-1111-080162	Hexagonal Bolt M8x16	3	
4	89-1711-080002	Flat Washer 8	6	
5	89-1750-080002	Spring Washer 8	8	
6	89-1571-080042	Bag Nut M8	3	
7	89-1111-080182	Hexagonal Bolt M8x18	2	
8	80-1032-764-00	Cutting Height Connecting Plate	1	
9	80-1032-763-00	Bolt for Cutting Height Connecting Plate	2	
10	89-1551-100042	U Nut M10	2	
11	80-1032-653-00	Gear Box Dust Cover	1	
12	80-1032-656-00	Lower Cover Packing	1	
13	80-1032-654-00	Lower Cover	1	
14	89-1113-060162	Hexagonal Bolt(8T) M6x16	4	
15	83-1032-632-00	Oil Seal KD40.52.5	1	
16	80-1032-833-00	Knife Bracket	1	
17	80-1030-821-00	Blade H40	1	
17	80-1030-822-00	Blade H60	1	Optional Part(for bush)
18	80-1030-837-00	Washer for Tighting	1	
19	80-1030-838-00	Washer for Knife Bracket Holder	1	
20	89-1514-160042	Hexagonal Nut(3 sorts) M16x1.5	1	
21	83-1030-188-00	Bag Nut M16x1.5	1	
22	89-1750-120002	Spring Washer 12	10	
23	89-1113-120252	Hexagonal Bolt(8T) M12x25	2	
24	80-1032-707-00	Link(front)	1	
25	80-1032-709-00	Link Bolt	8	
26	89-1711-120002	Flat Washer 12	8	
27	89-1551-120042	U Nut M12	8	
28	80-1032-708-00	Link(rear)	1	
29	83-1415-906-00	Label, Danger	2	
30	89-1750-100002	Spring Washer 10	6	
31	89-1111-100252	Hexagonal Bolt M10x25	6	

FIG. 5 FRAME

GR702

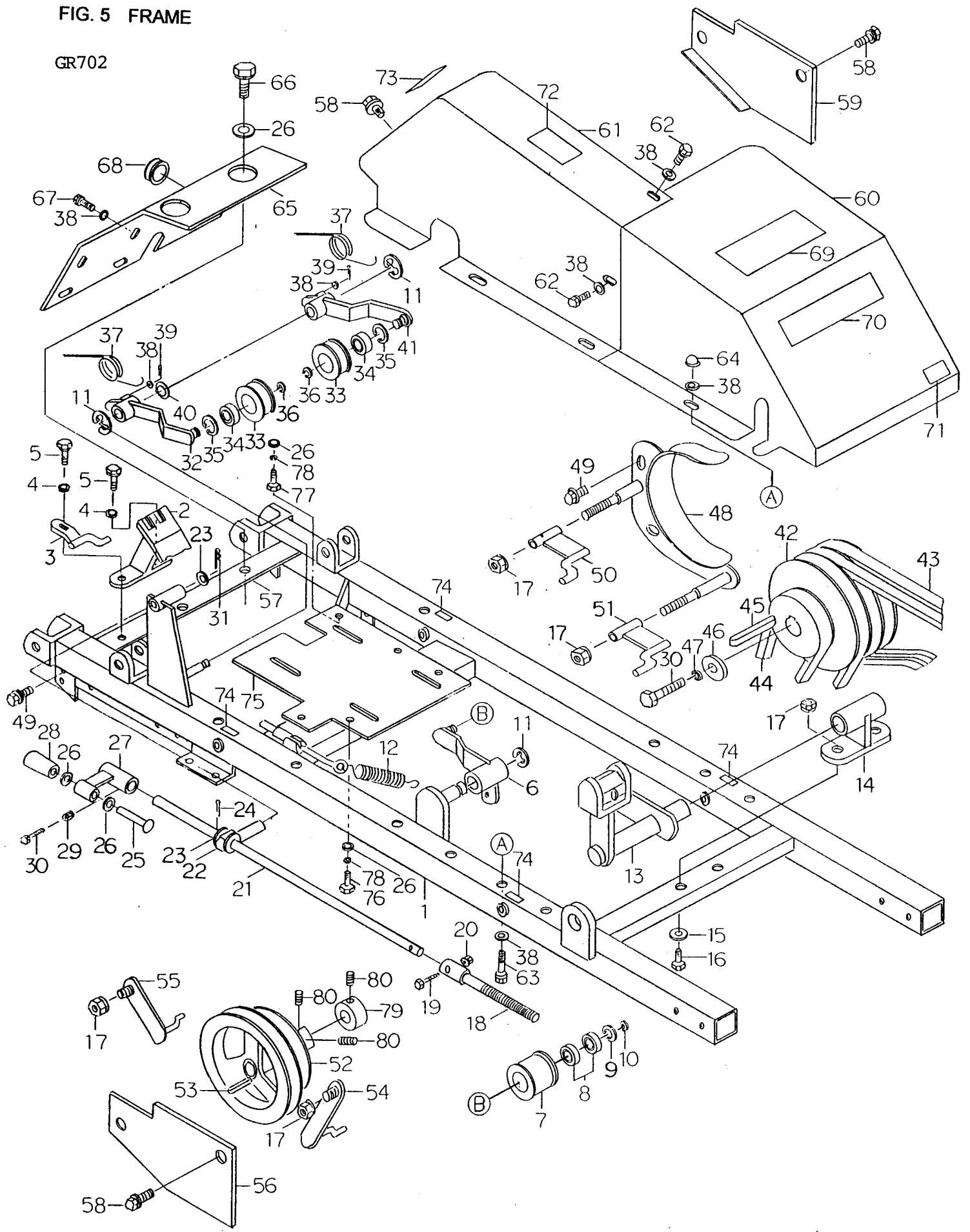


FIG. 5 FRAME

Ref.	Parts No.	Parts Name	Qty	Remarks
1	80-1032-301-00	Frame	1	
2	80-1032-554-00	Drive Tension Wire Receiver	1	
3	80-1032-566-00	Transmission Pulley Belt Holder(up)	1	
4	89-1711-080002	Flat Washer 8	2	
5	89-1135-080202	Hexagonal Bolt(SW) M8x20	2	
6	80-1032-556-00	Knife Tension Arm	1	
7	83-1450-772-00	Tension Pulley	1	
8	89-3114-062024	Bearing 6202 ZZ	2	
9	89-2512-000350	Snap Ring 35	1	
10	89-2511-000150	Snap Ring 15	1	
11	89-2521-000150	E-type Ring 15	3	
12	80-1030-558-00	Spring for Knife Tension	1	
13	80-1032-766-00	Cutting Height Adjust Shaft	1	
14	80-1032-767-00	Cutting Height Adjust Shaft Receiver	1	
15	83-1210-313-00	Washer 8x32x3.2	2	
16	89-1111-080402	Hexagonal Bolt M8x40	2	
17	89-1541-080042	Hexagonal Nut(SW) M8	6	
18	80-1030-743-00	Cutting Height Adjust Screw	1	
19	89-1113-060302	Hexagonal Bolt(8T) M6x30	1	
20	89-1551-060042	U Nut M6	1	
21	80-1032-762-00	Cutting Height Adjust Handle	1	
22	80-1030-742-00	Cutting Height Adjust Handle Boss	1	
23	89-1711-160002	Flat Washer 16	2	
24	89-2120-250302	Split Pin 2.5x30	1	
25	89-2181-100702	Flat Head Pin 10x70	1	
26	89-1711-100002	Flat Washer 10	9	
27	84-1712-739-00	Front Wheel Vertical Handle	1	
28	83-1210-425-00	Lever Grip 10	1	
29	89-1511-080042	Hexagonal Nut M8	1	
30	89-1113-080202	Hexagonal Bolt(8T) M8x20	2	
31	89-2131-160002	Snap Pin 16	1	
32	80-1032-542-00	Drive Tension Arm(low speed)	1	
33	83-1032-765-00	Tension Pulley	2	
34	89-3114-062034	Bearing 6203 ZZ	2	
35	89-2512-000400	Snap Ring 40	2	
36	89-2511-000170	Snap Ring 17	2	
37	80-1030-552-00	Return Spring	2	
38	89-1711-060002	Flat Washer 6	20	
39	89-2120-200152	Split Pin 2x15	2	
40	89-2511-000180	Snap Ring 18	1	
41	80-1032-546-00	Drive Tension Arm(high speed)	1	
42	80-1032-514-00	Engine Pulley	1	
43	89-6123-004401	V Belt(cutting) LB44	2	Note 1
44	89-6123-004401	V Belt(drive) LB44	2	Note 2
44	89-6123-004301	V Belt(drive) LB43	2	Note 3
45	89-2151-070450	Key 7x45	1	
46	83-1020-312-00	Washer 8x30x3.2	1	
47	89-1750-080002	Spring Washer 8	1	
48	80-1032-561-00	Engine Pulley Belt Holder	1	Note 2
	80-1032-561-10	Engine Pulley Belt Holder	1	Note 3
49	89-1136-080202	Hexagonal Bolt(SP) M8x20	2	
50	80-1032-562-00	Drive Belt Holder(upper)	1	
51	80-1032-563-00	Drive Belt Holder(lower)	1	
52	80-1032-521-00	Transmission Pulley	1	
53	89-2151-050400	Key 5x40	1	
54	80-1032-564-00	Transmission Pulley Belt Holder(front)	1	
55	80-1032-565-00	Transmission Pulley Belt Holder(rear)	1	
56	80-1032-503-00	Pulley Cover(R)	1	
57	80-1032-304-00	Pulley Cover Setting	1	

58	89-1136-080162	Hexagonal Bolt(SP) M8x16	7	
59	80-1032-502-00	Pulley Cover(L)	1	
60	80-1032-505-00	Bonnet(front)	1	
61	80-1032-506-00	Bonnet(rear)	1	
62	89-1135-060122	Hexagonal Bolt(SW) M6x12	2	
63	89-1111-060502	Hexagonal Bolt M6x50	5	
64	89-1571-060042	Bag Nut M6	5	
65	80-1032-504-00	Pulley Cover(rear)	1	
66	89-1135-100252	Hexagonal Bolt(SW) M10x25	2	
67	89-1135-060162	Hexagonal Bolt(SW) M6x16	6	
68	83-1032-669-00	Gromet 25.35.6	1	
69	83-1030-904-00	Label, G	1	
70	80-1032-902-00	Label, Model	1	
71	80-1030-924-00	Label, Oil Quantity	1	
72	80-1415-928-00	Label, Caution	1	
73	80-1210-927-00	Label, Caution	1	
74	83-1141-918-00	Label, Caution	4	
75	80-1032-311-00	Engine Base	1	Note 2
	80-1032-311-10	Engine Base	1	Note 3
76	89-1111-100452	Hexagonal Bolt M10x45	4	
77	89-1111-100552	Hexagonal Bolt M10x55	1	
78	89-1750-100002	Spring Washer 10	5	
79	80-1032-124-00	Seal Cover	1	
80	89-1172-080101	Hexagonal Hole Screw M8x10	3	

M E M O

Note 1 : Used for G910L-96 and GM301LN.

Note 2 : Used for G910-96.

Note 3 : Used for GM301LN.

FIG. 6 FRONT & REAR WHEEL

GR702

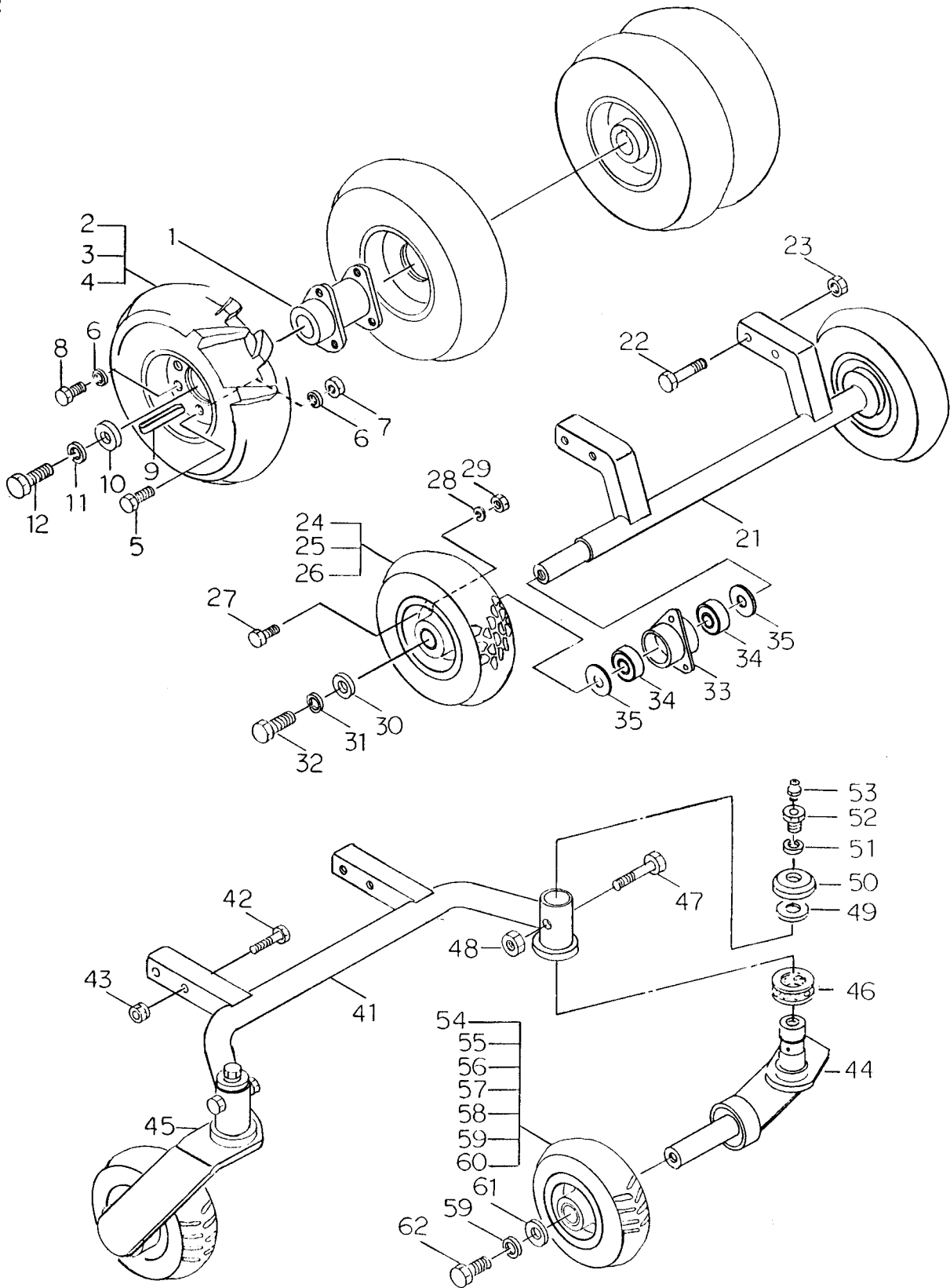


FIG. 6 FRONT & REAR WHEELS

Ref.	Parts No.	Parts Name	Qty	Remarks
1-8	85-1032-120-00	Lug Tire Boss ASSY	2	
1	80-1032-413-00	Wheel Boss(for Lug Tire)	2	
2-7	80-1032-411-00	Lug Tire ASSY(L)	2	
	80-1032-412-00	Lug Tire ASSY(R)	2	
2	80-1160-401-00	Tire 3.50-5	4	
3	80-1160-404-00	Tube	4	
4	80-1032-407-00	Wheel ASSY	4	
5	89-1111-080162	Hexagonal Bolt M8x16	12	
6	89-1750-080002	Spring Washer 8	24	
7	89-1511-080042	Hexagonal Nut M8	12	
8	89-1111-080202	Hexagonal M8x20	12	
1-8	85-1032-125-00	Turf Tire Boss ASSY	2	
1	80-1032-414-00	Wheel Boss(for Turf Tire)	2	
2-7	80-1030-421-00	Turf Tire ASSY	4	
2	80-1030-402-00	Tire 13x5.00-6	4	
3	80-1030-405-00	Tube	4	
4	80-1030-408-00	Wheel ASSY	4	
5	89-1111-080162	Hexagonal Bolt M8x16	12	
6	89-1750-080002	Spring Washer 8	24	
7	89-1511-080042	Hexagonal Nut M8	12	
8	89-1111-080202	Hexagonal Bolt M8x20	12	
9	89-2151-070400	Key 7x40	2	
10	83-1610-321-00	Washer 10x36x4.5	2	
11	89-1750-100002	Spring Washer 10	2	
12	89-1113-100352	Hexagonal Bolt(8T) M10x35	2	
21-35	85-1032-510-00	Fixed Front Wheel ASSY	1	
21	80-1032-723-00	Fixed Front Wheel Arm	1	
22	89-1111-080602	Hexagonal Bolt M8x60	4	
23	89-1541-080042	Hexagonal Nut(SW) M8	4	
24-29	80-1030-727-10	Tire ASSY 3.50-5	2	
24	80-1030-771-00	Tire	2	
25	80-1030-772-00	Tube	2	
26	80-1633-773-00	Wheel ASSY	2	
27	89-1111-080162	Hexagonal Bolt M8x16	12	
28	89-1750-080002	Spring Washer 8	12	
29	89-1511-080042	Hexagonal Nut M8	12	
30	83-1610-321-00	Washer 10x36x4.5	2	
31	89-1750-100002	Spring Washer 10	2	
32	89-1111-100252	Hexagonal Bolt M10x25	2	
33	80-1633-774-10	Front Wheel Boss	2	
34	89-3115-062044	Bearing 6204 2RS	4	
35	83-1633-339-00	Front Wheel Dust Cover Washer 20x46x1.2	4	
41-62	85-1032-515-00	Free Front Wheel ASSY	1	
41	80-1032-722-00	Front Wheel Arm	1	
42	89-1111-080602	Hexagonal Bolt M8x60	4	
43	89-1541-080042	Hexagonal Nut(SW) M8	4	
44	84-1783-725-10	Front Wheel Fork(L)	1	
45	84-1783-726-10	Front Wheel Fork(R)	1	
46	89-3370-051105	Thrust Bearing 51105	2	
47	89-1111-100452	Hexagonal Bolt M10x45	2	
48	89-1551-100042	U Nut M10	2	
49	84-1783-792-00	Washer 25x34x1.0	2	
50	84-1783-729-00	Fork Shaft Dust Cover	2	
51	89-1750-140002	Spring Washer 14	2	
52	84-1783-791-00	Grease Nipple Bolt M14	2	
53	83-1415-975-00	Grease Nipple M6	2	
54-60	84-1563-727-00	Tire ASSY 2.50-4	2	



54	84-1563-771-00	Tire	2	
55	84-1563-772-00	Tube	2	
56	84-1563-773-00	Wheel ASSY	2	Note 1
57	83-1031-988-00	Bearing 204B	4	
58	89-1111-080162	Hexagonal Bolt M8x16	8	
59	89-1750-080002	Spring Washer 8	10	
60	89-1511-080042	Hexagonal Nut M8	8	
61	83-1210-313-00	Washer 8x32x3.2	2	
62	89-1111-080202	Hexagonal Bolt M8x20	2	

M E M O

Note 1 : Wheel Assy is not supplied by itself.