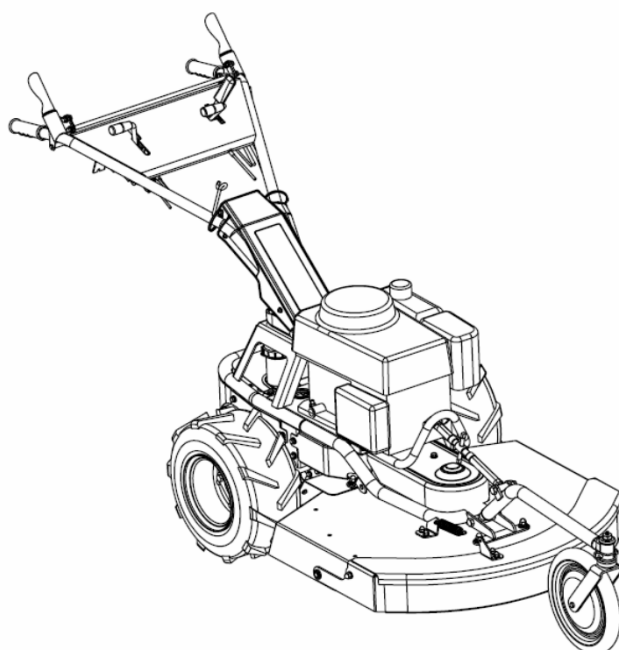


PARTS CATALOG

BUSH CUTTER

(EXPORT MODEL)

SH72HST



MODEL	CODE
SH71HST	0324-00000

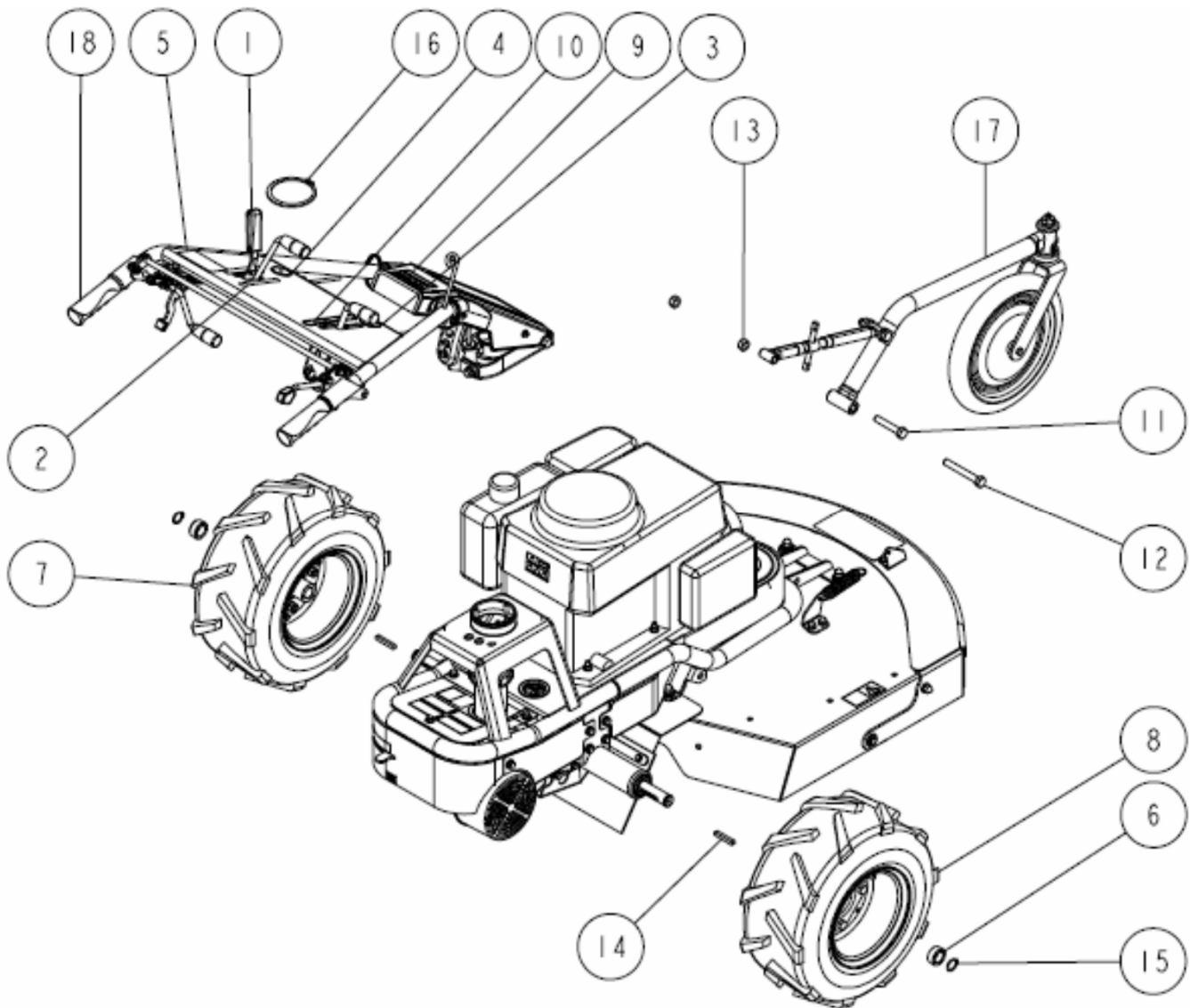
CONTENTS

FRAME-----	1
REAR WHEEL-----	8
FRONT ARM-----	9
KNIFE COVER-----	10
HANDLE-----	12
TRANSMISSION-----	17
HST UNIT-----	27

OREC CO.,LTD.

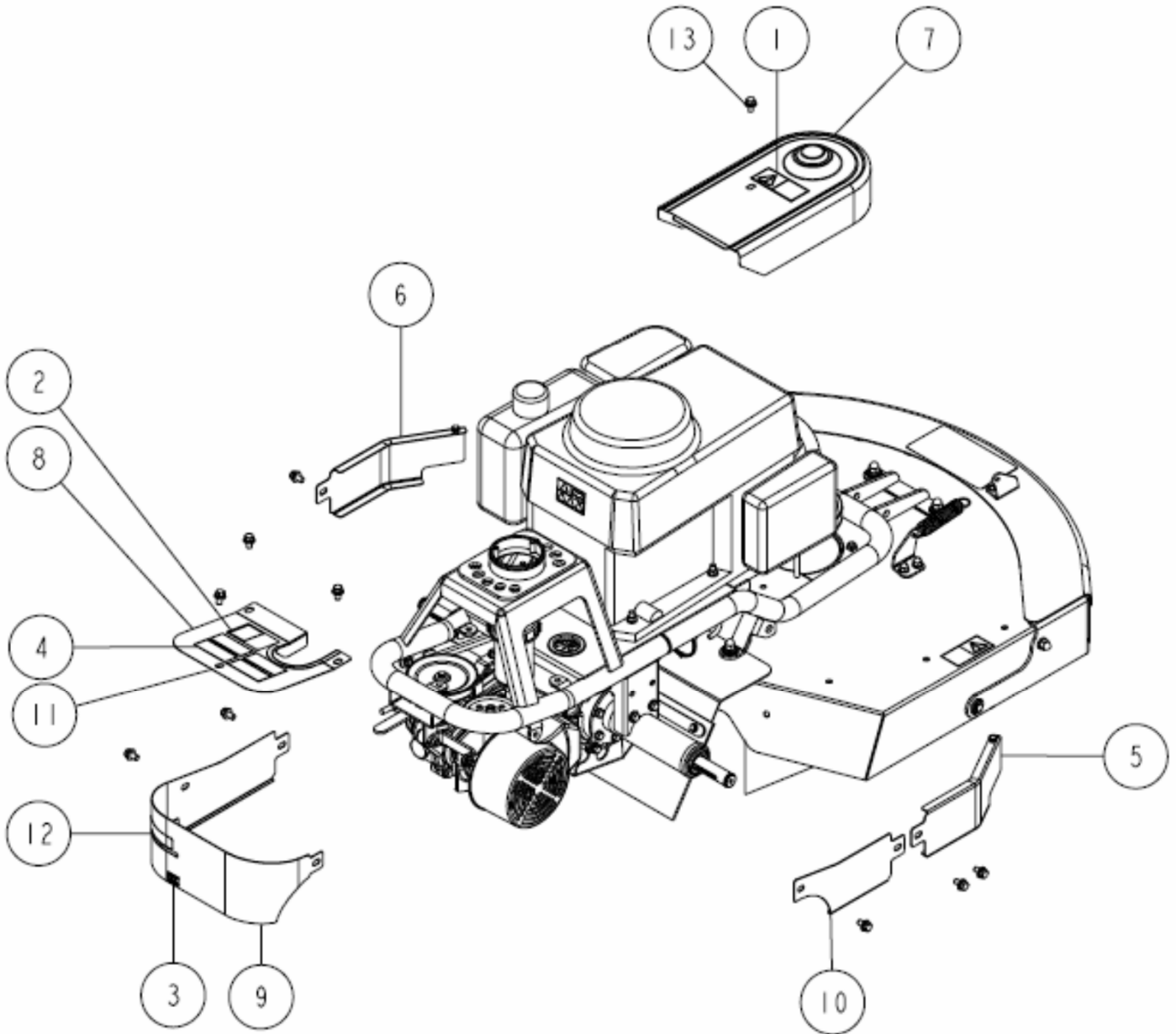
Update : May 2014

1/28 Frame 1/7



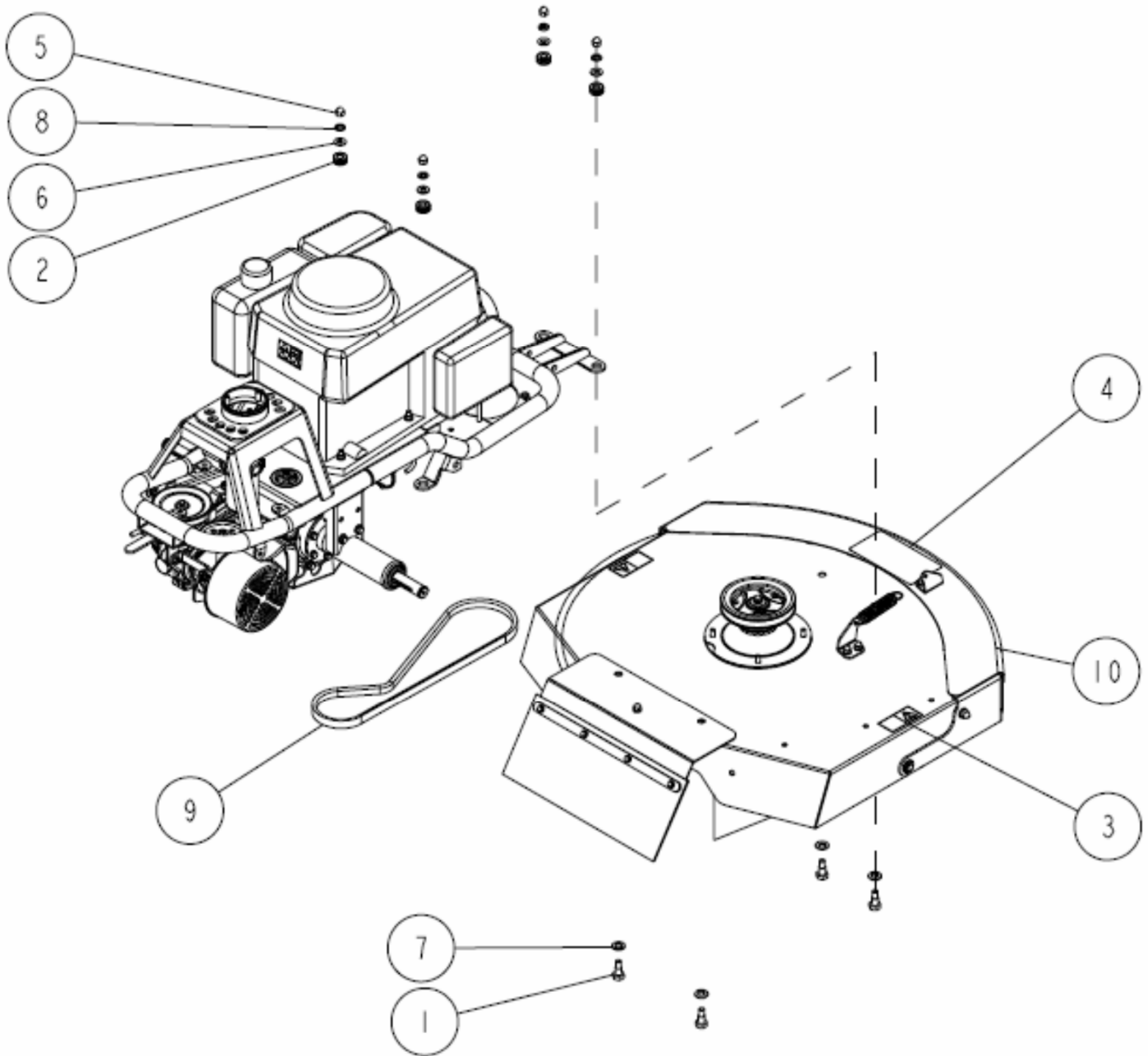
Ref.	Parts Number	Parts Name	Quantity	Remarks
1	80-1020-911-10	Throttle Label (K)	1	
2	80-1417-906-10	Label, Differential Lock	1	
3	0215-83200	Label, Protection Equipment	1	
4	0223-72910	Attention Mark for Slope	1	
5	0320-73300	Label, Driving, Knife Control	1	
6	0324-30100	Wheel Boss Collar	2	
7	0324-31100	Rear Wheel (L) ASSY	1	
8	0324-31200	Rear Wheel (R) ASSY	1	
9	0324-71100	Label, Main	1	
10	0324-71200	Label, Change	1	
11	89-1111-120652	Hexagonal Bolt M12*65	1	
12	89-1111-120902	Hexagonal Bolt M12*90	1	
13	89-1551-120002	Hexagonal U Nut M12	2	
14	89-2150-070500	Key 7*50 (round)	2	
15	89-2511-000220	Snap Ring (S22)	2	
16	89-2511-000850	Snap Ring (S85)	1	
17	-	Front Arm ASSY	1	
18	-	Handle ASSY	1	

2/28 Frame 2/7



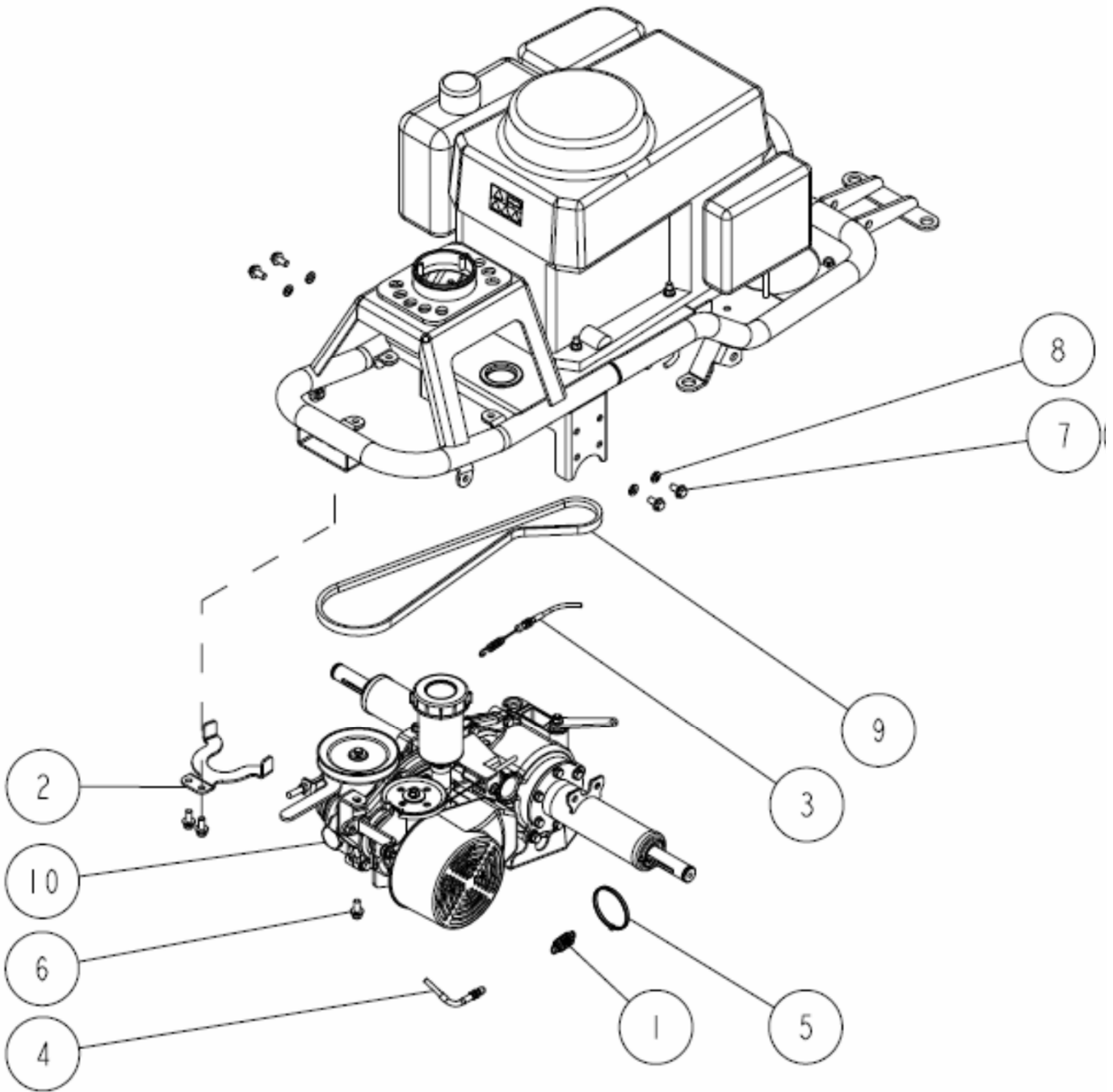
Ref.	Parts Number	Parts Name	Quantity	Remarks
1	80-1488-928-10	Label, Caution for Belt Involving	1	
2	0202-74400	Label, Noise	1	
3	0217-70800	Label, Gear Oil 1.0L	1	
4	0223-76100	Label, Caution (Large)	1	
5	0257-60100	Engine Pulley Cover (Right)	1	
6	0257-60300	Engine Pulley Cover (Left)	1	
7	0257-60500	Knife Pulley Cover	1	
8	0320-60100	Belt Cover A CMP	1	
9	0320-60200	Belt Cover B CMP	1	
10	0320-60300	Belt Cover C	1	
11	0320-70100	Rubber 175L	1	
12	0320-73400	Label, Driving	1	
13	89-1233-080162	Mini Hexagonal Bolt (PWSW) M8*16	10	

3/28 Frame 3/7



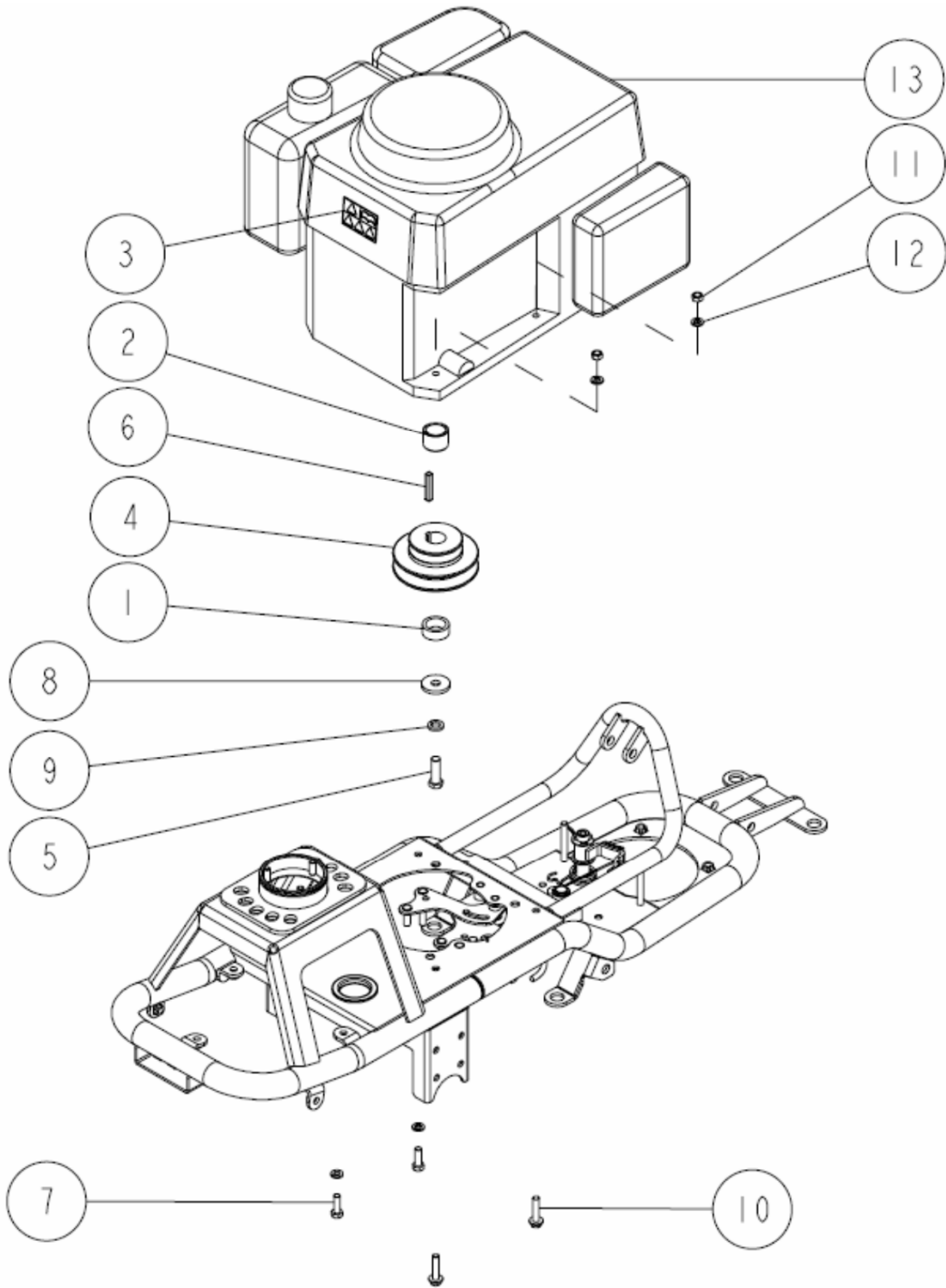
Ref.	Parts Number	Parts Name	Quantity	Remarks
1	80-1450-709-00	Bolt for Attaching Stay	4	
2	80-1450-719-00	Grommet	4	
3	80-1488-926-10	Label, Caution for Knife	2	
4	0203-71100	Label, Main (Shuttle Mower)	1	
5	89-1671-100042	Mini Cap Nut M10	4	
6	89-1714-100002	Flat Washer 10	4	
7	89-1714-120002	Flat Washer 12	4	
8	89-1750-100002	Spring Washer 10	4	
9	89-6123-004501	V Belt SBR-45	1	
10	-	Knife Cover ASSY	1	

4/28 Frame 4/7



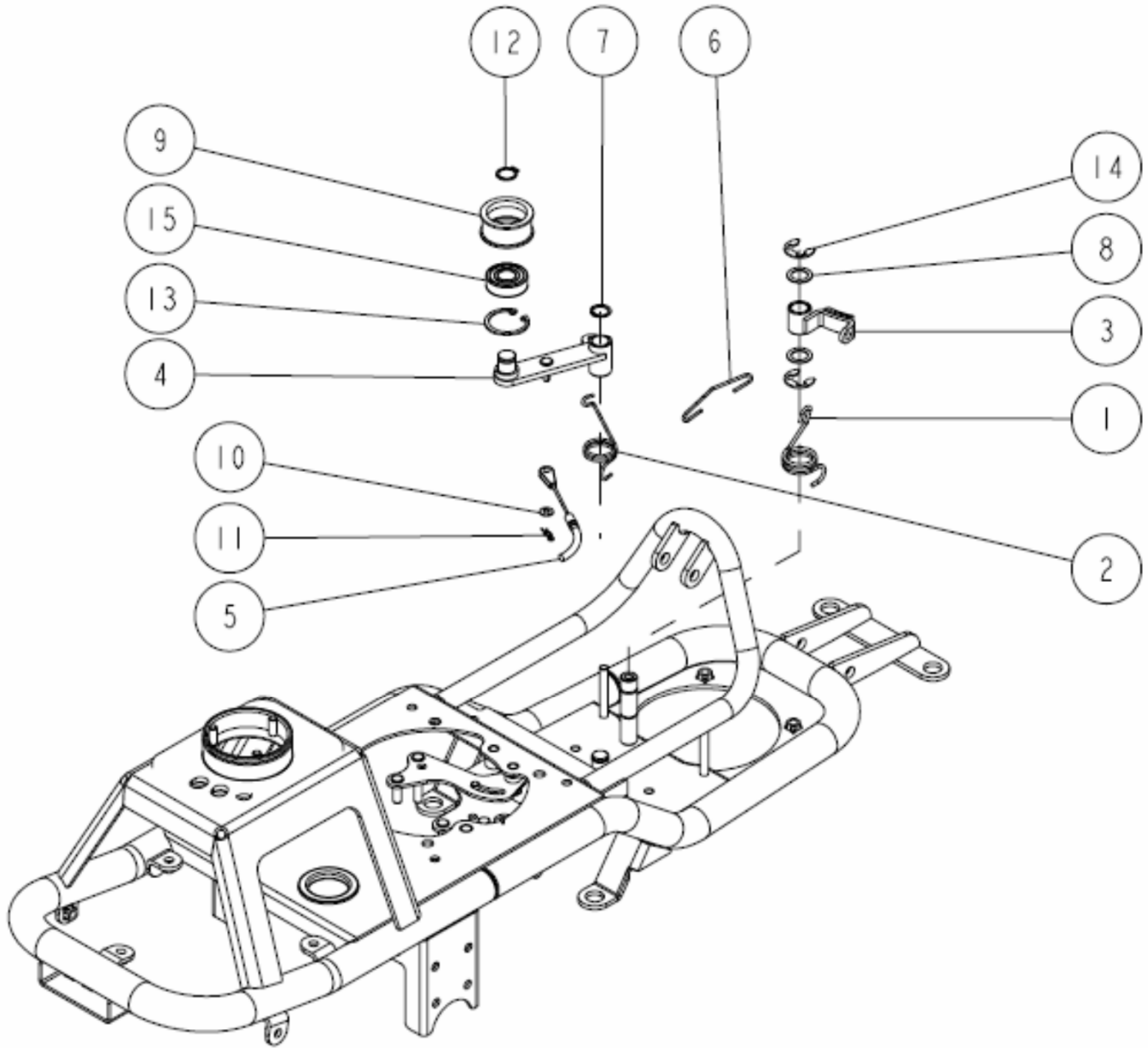
Ref.	Parts Number	Parts Name	Quantity	Remarks
1	80-1417-155-00	Spring	1	
2	0320-40200	Driving Belt Stopper	1	
3	0320-70800	Brake Wire	1	
4	0320-71100	Defferential Lock Wire	1	
5	83-1711-719-00	Wire Band 200L	1	
6	89-1233-080202	Mini Hexagonal Bolt (PWSW) M8*20	3	
7	89-1253-080162	Flange Mini Hexagonal Bolt (8T) M8*16	4	
8	89-1750-080002	Spring Washer 8	4	
9	89-6122-004001	V Belt SAR-40	1	
10	-	Transmission ASSY	1	

5/28 Frame 5/7



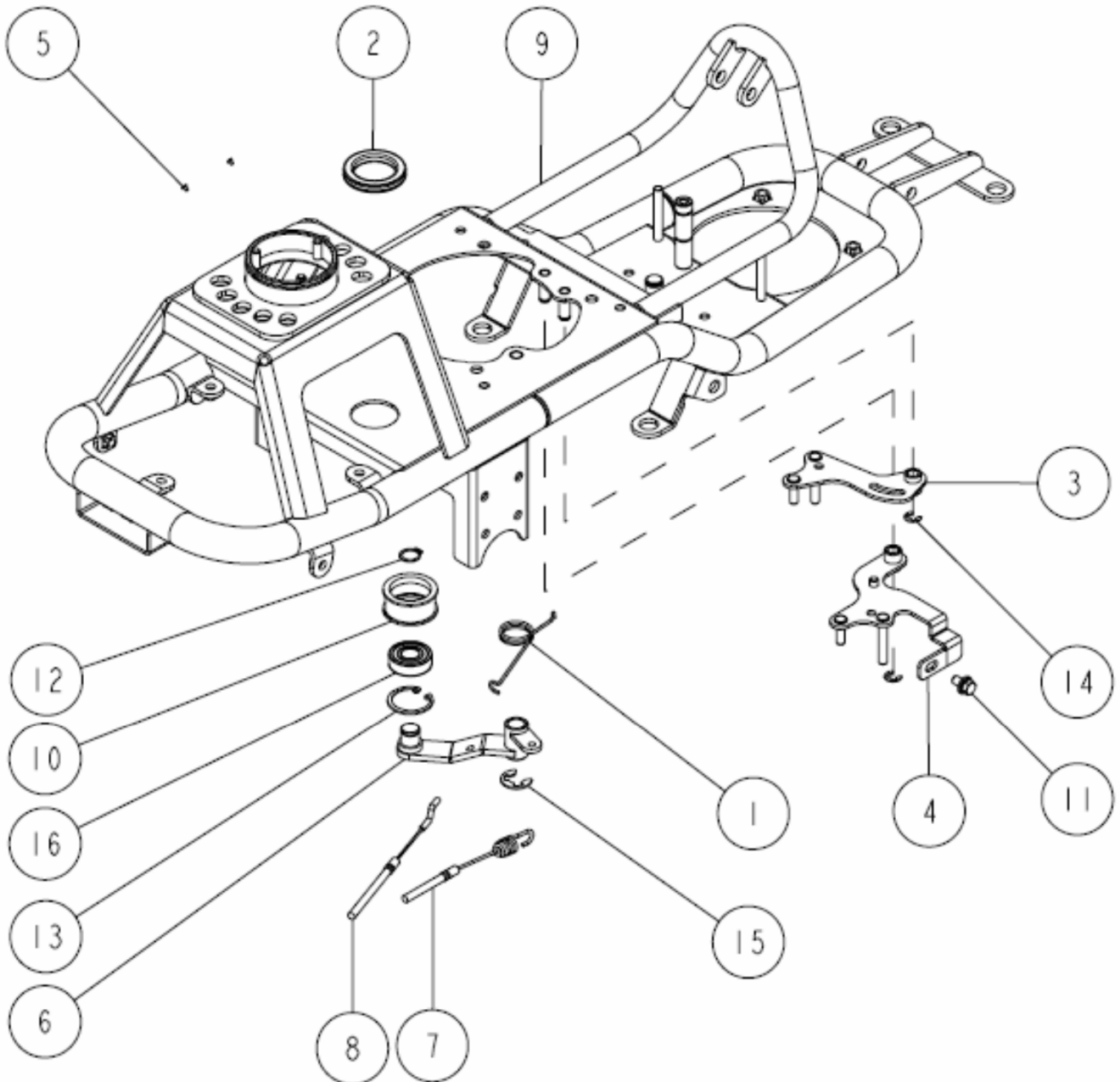
Ref.	Parts Number	Parts Name	Quantity	Remarks
1	80-1330-515-10	Pulley Collar (L13)	1	
2	80-1437-516-10	Pulley Collar (L23)	1	
3	0214-72100	Label, Caution for Engine etc	1	
4	0258-40100	Engine Pulley	1	
5	83-1437-115-00	Hexagonal Bolt (8T) UNF7/16*35	1	
6	83-1437-205-00	Key 1/4 inch *40	1	
7	83-1482-116-00	Hexagonal Bolt UNF5/16-24*25	2	
8	83-1482-319-00	Washer 11*36*4.5	1	
9	83-1493-300-00	Spring Washer 7/16	1	
10	89-1253-080352	Flange Mini Hexagonal Bolt (8T) M8*35	2	
11	89-1611-080042	Mini Hexagonal Nut M8	2	
12	89-1750-080002	Spring Washer 8	4	
13	9007-0271	GXV340UT2 DN4	1	

6/28 Frame 6/7



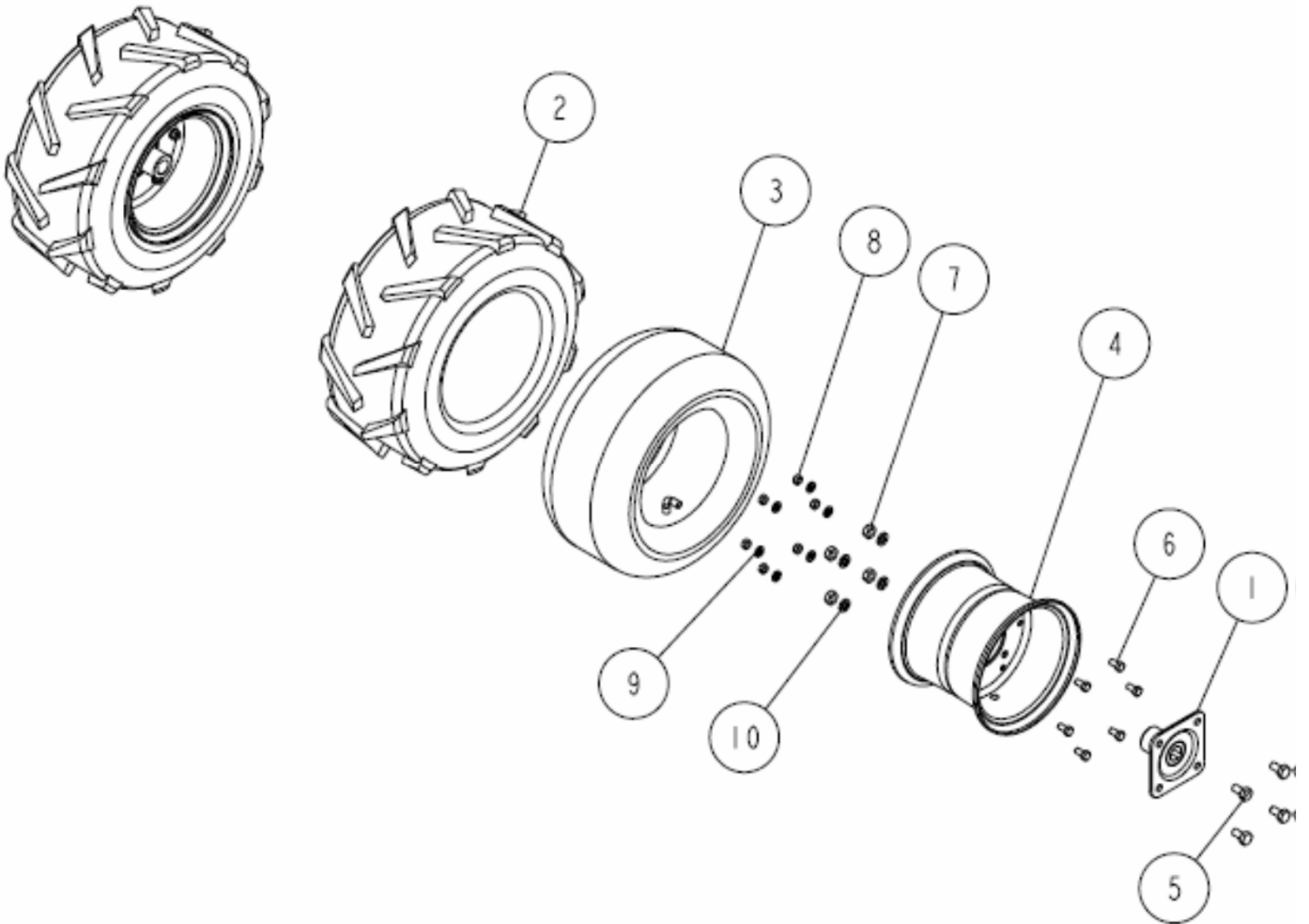
Ref.	Parts Number	Parts Name	Quantity	Remarks
1	80-1417-373-00	Return Spring	1	
2	80-1417-568-00	Knife Tension Return Spring	1	
3	0231-37100	Knife Brake	1	
4	0320-50100	Knife Tension Arm	1	
5	0320-70600	Knife Clutch Wire	1	
6	0320-74100	Brake Rod	1	
7	0320-74200	S Type Ring 16	1	
8	83-1020-363-00	Thrust Washer 16*24*1.0	2	
9	83-1032-765-00	Tension Pulley	1	
10	89-1711-060002	Flat Washer 6	1	
11	89-2132-060002	Snap Pin 6 (with stopper)	1	
12	89-2511-000170	Snap Ring (S17)	1	
13	89-2512-000400	Snap Ring (R40)	1	
14	89-2521-000150	E Type Ring 15	2	
15	89-3115-062034	Bearing 6203 2RS	1	

7/28 Frame 7/7



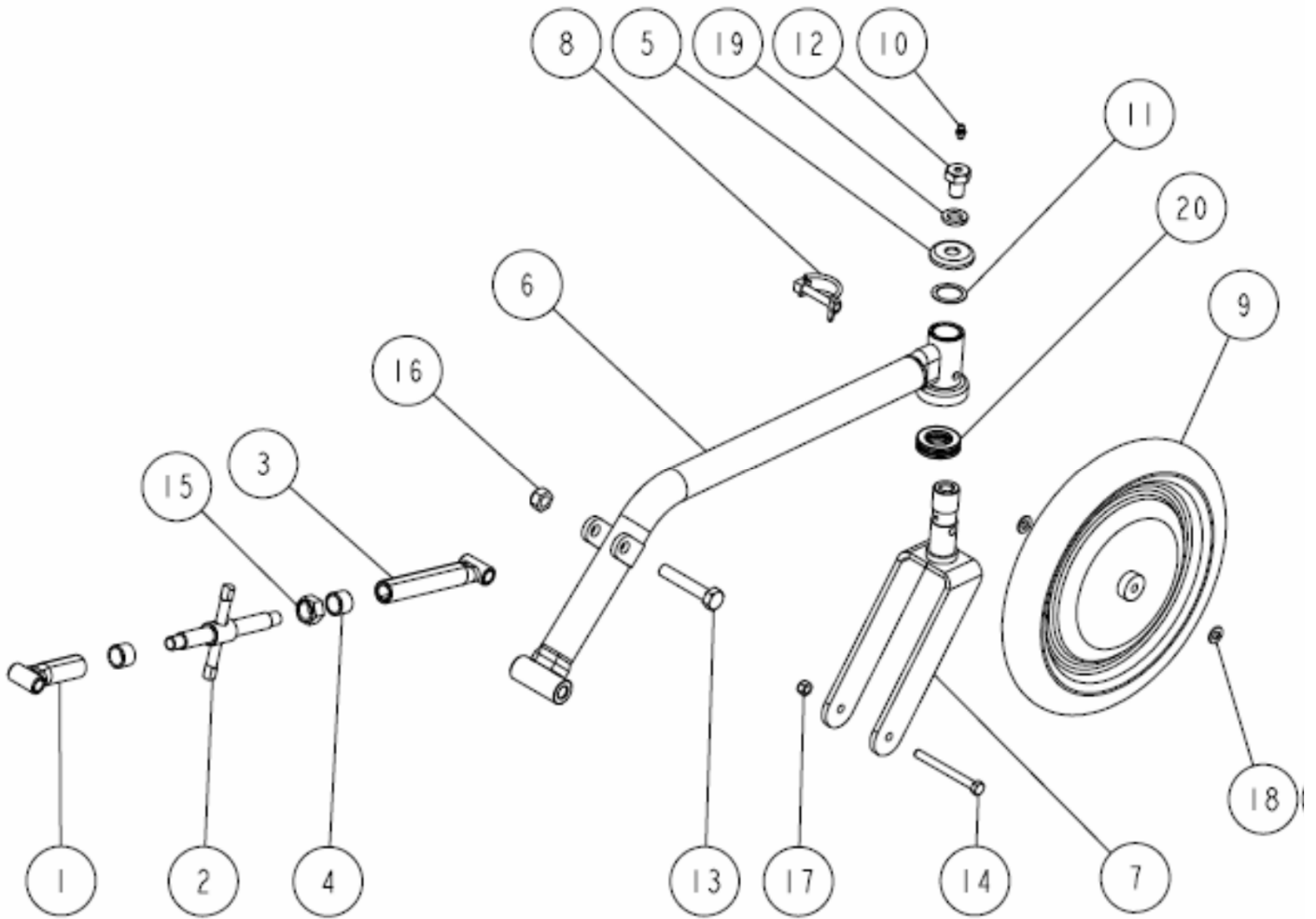
Ref.	Parts Number	Parts Name	Quantity	Remarks
1	80-1417-552-00	Return Spring	1	
2	0207-70800	Grommet 45-3.5	1	
3	0257-40300	Engine Belt Stopper A	1	
4	0257-40500	Engine Belt Stopper B	1	
5	0284-73100	Blind Revet NA3-3	2	
6	0320-40300	Driving Tension Arm	1	
7	0320-70700	Driving Clutch Wire	1	
8	0320-71300	Change Brake Wire	1	
9	0324-20100	Frame CMP	1	
10	83-1032-765-00	Tension Pulley	1	
11	89-1233-080162	Mini Hexagonal Bolt (PWSW) M8*16	1	
12	89-2511-000170	Snap Ring (S17)	1	
13	89-2512-000400	Snap Ring (R40)	1	
14	89-2521-000080	E Type Ring 8	2	
15	89-2521-000150	E Type Ring 15	1	
16	89-3115-062034	Bearing 6203 2RS	1	

8/28 Rear Wheel 1/1



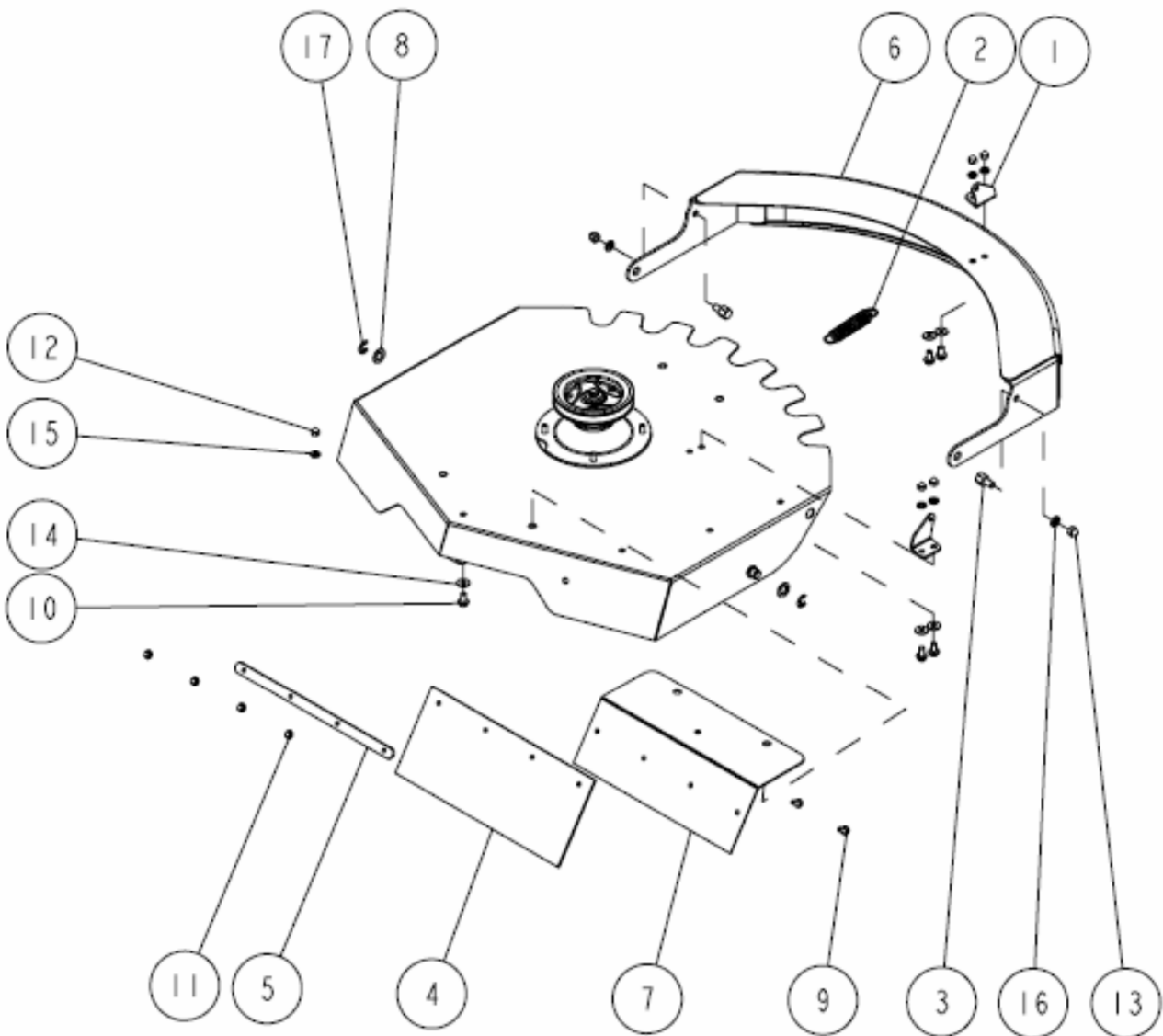
Ref.	Parts Number	Parts Name	Quantity	Remarks
1	80-1437-413-10	Wheel Boss	2	
2	80-1761-401-00	Tire (16*7.00-8)	2	
3	80-1761-404-00	Tire Tube (16*7.00-8)	2	
4	80-1761-407-00	Wheel Assy (16*7.00-8)	2	
5	89-1111-100202	Hexagonal Bolt M10*20	8	
6	89-1211-080162	Mini Hexagonal Bolt M8*16	12	
7	89-1511-100042	Hexagonal Nut M10	8	
8	89-1611-080042	Mini Hexagonal Nut M8	12	
9	89-1750-080002	Spring Washer 8	12	
10	89-1750-100002	Spring Washer 10	8	

9/28 Front Arm 1/1



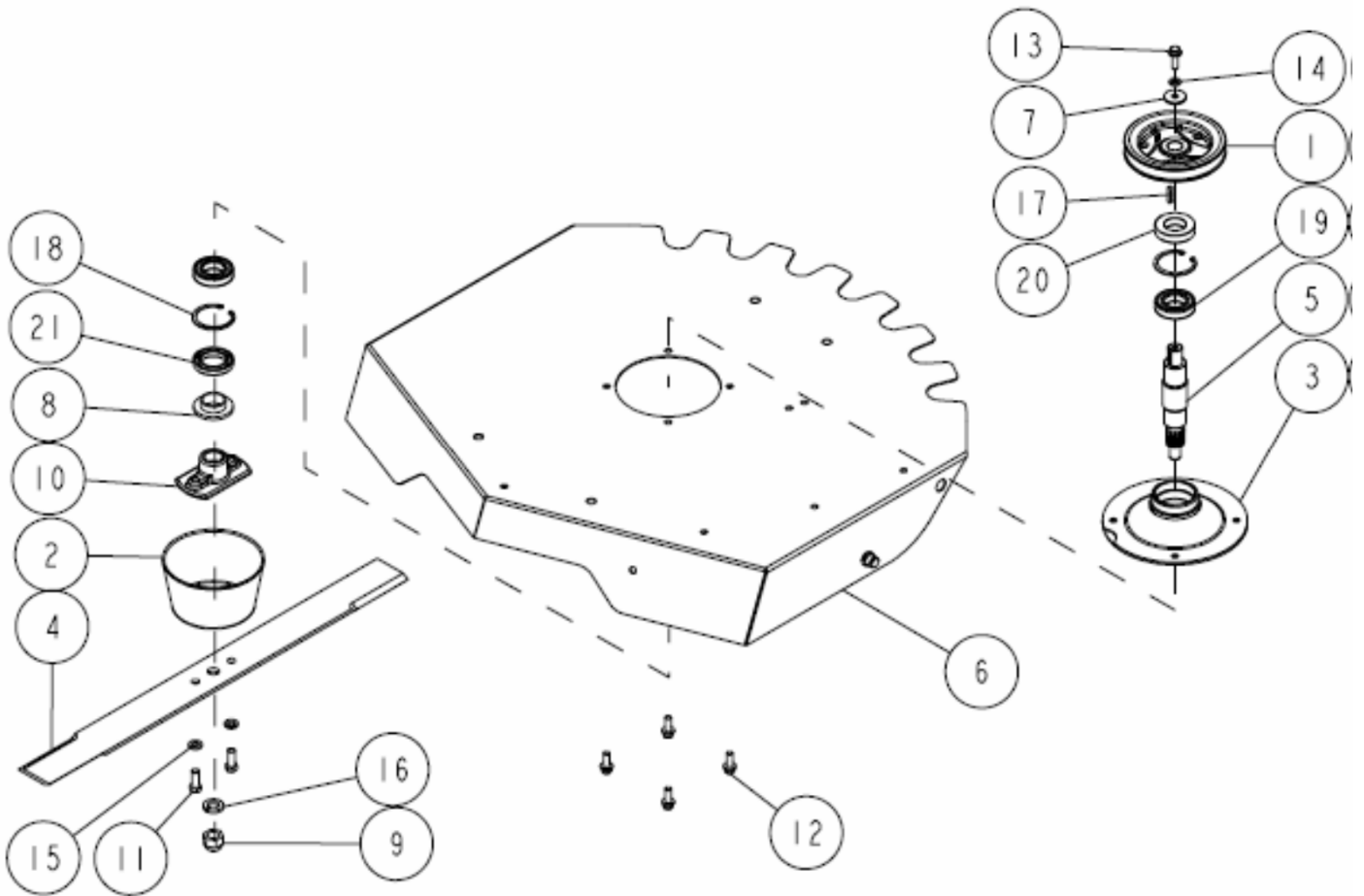
Ref.	Parts Number	Parts Name	Quantity	Remarks
1	80-1415-741-00	Receiver for Adjusting Bolt (L)	1	
2	0212-74300	Cutting Height Adjustment Bolt	1	
3	0231-74200	Receiver for Adjusting Bolt (R)	1	
4	0231-74300	Cutting Height Adjustment Collar	2	
5	0256-60700	Dust Cover	1	
6	0258-60410	Front Wheel Arm	1	
7	0258-60510	Front Wheel Fork	1	
8	0258-70200	Pipe Pin 8	1	
9	0258-70300	Front Wheel	1	
10	83-1415-975-00	Grease Nipple M6	1	
11	83-1783-376-00	Thrust Washer 25*34*1.0	1	
12	84-1783-791-00	Grease Nipple Bolt M14	1	
13	89-1111-120652	Hexagonal Bolt M12*65	1	
14	89-1213-080802	Mini Hexagonal Bolt (8T) M8*80	1	
15	89-1511-160042	Hexagonal Nut M16		
16	89-1551-120002	Hexagonal U Nut M12	1	
17	89-1561-080002	Mini Hexagonal U Nut M8	1	
18	89-1711-080002	Flat Washer 8	2	
19	89-1750-140002	Spring Washer 14	1	
20	89-3370-051105	Thrust Bearing 51105	1	

10/28 Knife Cover 1/2



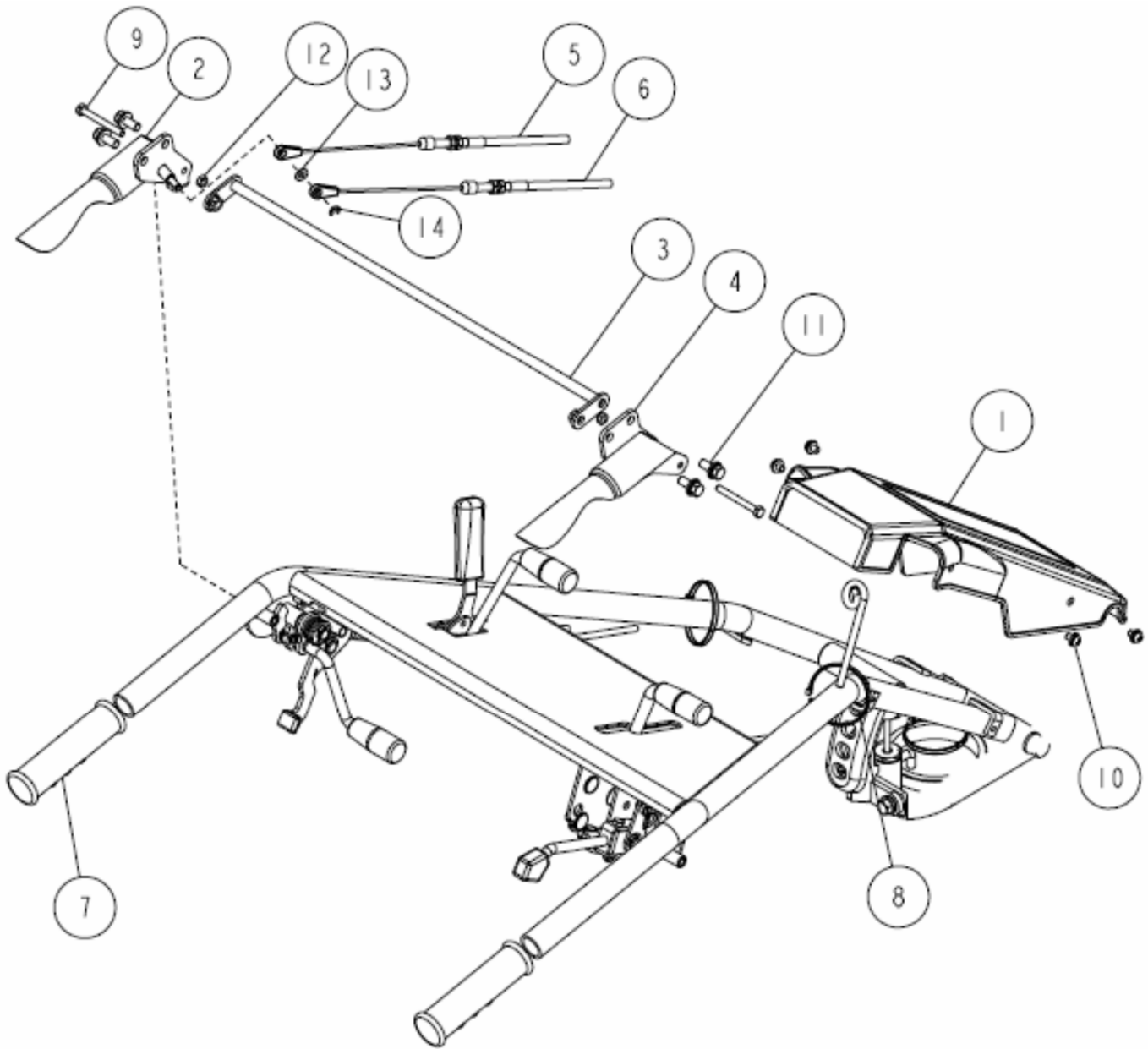
Ref.	Parts Number	Parts Name	Quantity	Remarks
1	80-1020-705-30	Lock Arm Bracket A	2	
2	80-1417-735-00	Spring	1	
3	80-1417-736-00	Bolt for Fixing Front Guard	1	
4	80-1417-781-00	Rear Flapper	1	
5	80-1417-785-00	Supporter for Flapper	1	
6	80-1437-733-00	Front Guard CMP	1	
7	0231-75100	Rear Guard	1	
8	83-1630-342-00	Washer 16*26*2.3	2	
9	89-1137-060172	Hexagonal Bolt (PW) M6*17	4	
10	89-1253-080162	Flange Mini Hexagonal Bolt (8T) M8*16	5	
11	89-1581-060042	Flange Cap Nut M6	4	
12	89-1671-080042	Mini Cap Nut M8	5	
13	89-1671-100042	Mini Cap Nut M10	1	
14	89-1713-080002	Flat Washer 8 (large)	5	
15	89-1750-080002	Spring Washer 8	5	
16	89-1750-100002	Spring Washer 10	1	
17	89-2521-000120	E Type Ring 12	2	

11/28 Knife Cover 2/2



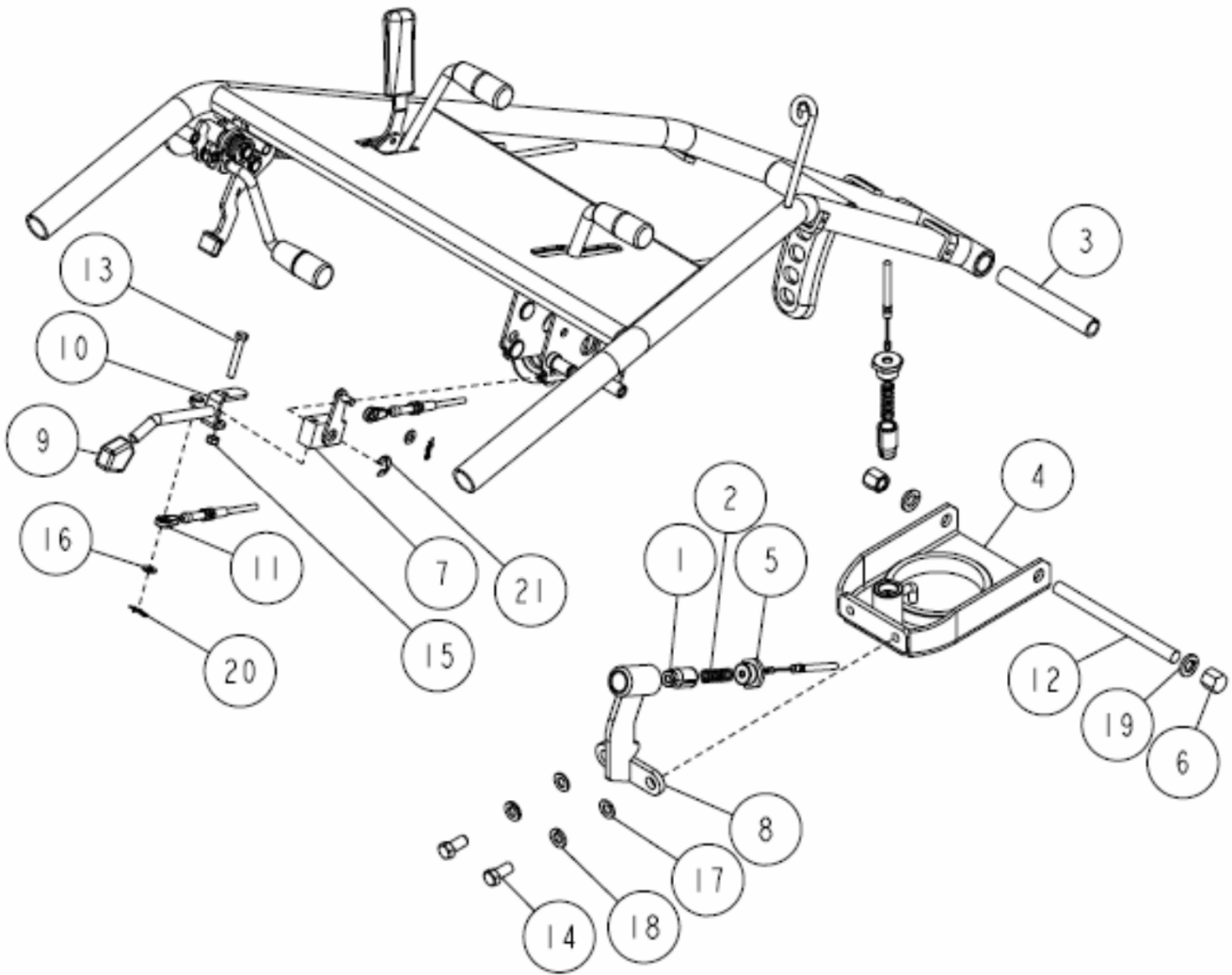
Ref.	Parts Number	Parts Name	Quantity	Remarks
1	80-1415-571-10	Knife Pulley	1	
2	80-1415-836-00	Knife Neck Guard	1	
3	80-1417-601-00	Knife BB Case	1	
4	80-1445-821-00	Bar Knife SH70	1	
5	0231-64100	Knife Axle	1	
6	0232-73100	Knife Cover CMP	1	
7	83-1415-312-00	Washer 8*30*3.2	1	
8	83-1415-662-00	Oil Seal AP 35.55.8	1	
9	83-1732-175-00	Bag Nut M16 (Lock)	1	
10	84-1763-833-00	Knife Bracket	1	
11	89-1213-100252	Mini Hexagonal Bolt (8T) M10*25	2	
12	89-1236-080252	Mini Hexagonal Bolt (PWSW) M8*25	4	
13	89-1253-080252	Flange Mini Hexagonal Bolt (8T) M8*25	1	
14	89-1750-080002	Spring Washer 8	1	
15	89-1750-100002	Spring Washer 10	2	
16	89-1750-160002	Spring Washer 16	1	
17	89-2151-050250	Key 5*25 (half round)	1	
18	89-2512-000550	Snap Ring (R55)	2	
19	89-3115-060064	Bearing 6006 2RS	2	
20	89-5121-305512	Oil Seal UE 30.55.12	1	
21	89-5121-355508	Oil Seal UE 35.55.8	1	

12/28 Handle 1/5



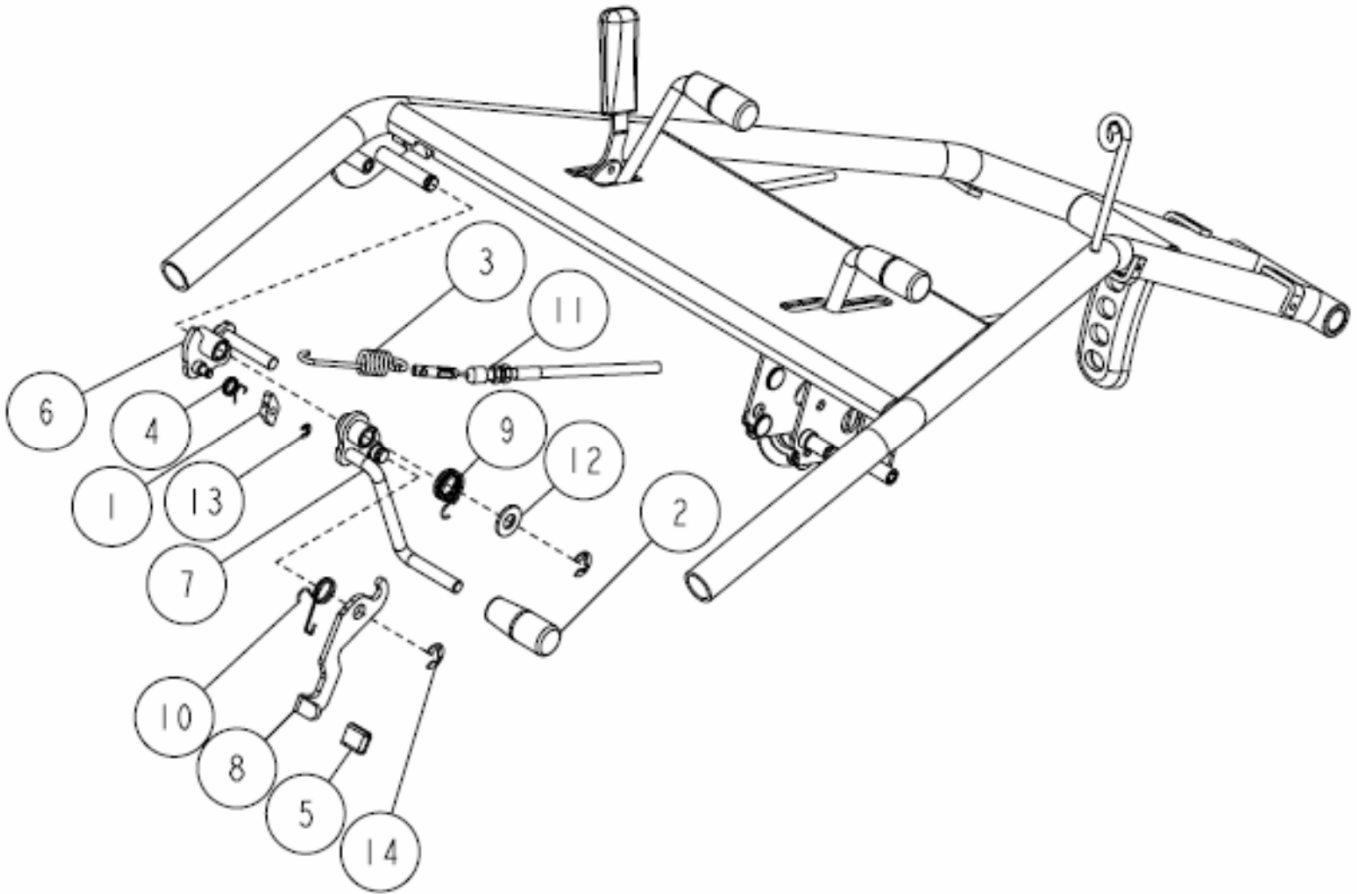
Ref.	Parts Number	Parts Name	Quantity	Remarks
1	80-1415-223-00	Handle Bonnet	1	
2	0320-11200	Driving Clutch Lever (L)	1	
3	0320-11300	Connection Bar CMP	1	
4	0320-11400	Driving Clutch Lever (R)	1	
5	0320-70700	Driving Clutch Wire	1	
6	0320-70800	Brake Wire	1	
7	83-1560-414-00	Handle Grip 27	2	
8	83-1711-719-00	Wire Band 200L	3	
9	89-1113-060552	Hexagonal Bolt (8T) M6*55	2	
10	89-1158-060102	Cross recess Headed Screw (PWSW) M6*10	4	
11	89-1236-080202	Mini Hexagonal Bolt (PWSW) M8*20	4	
12	89-1551-060002	Hexagonal U Nut M6	2	
13	89-1711-060002	Flat Washer 6	1	
14	89-2521-000050	E Type Ring 5	1	

13/28 Handle 2/5



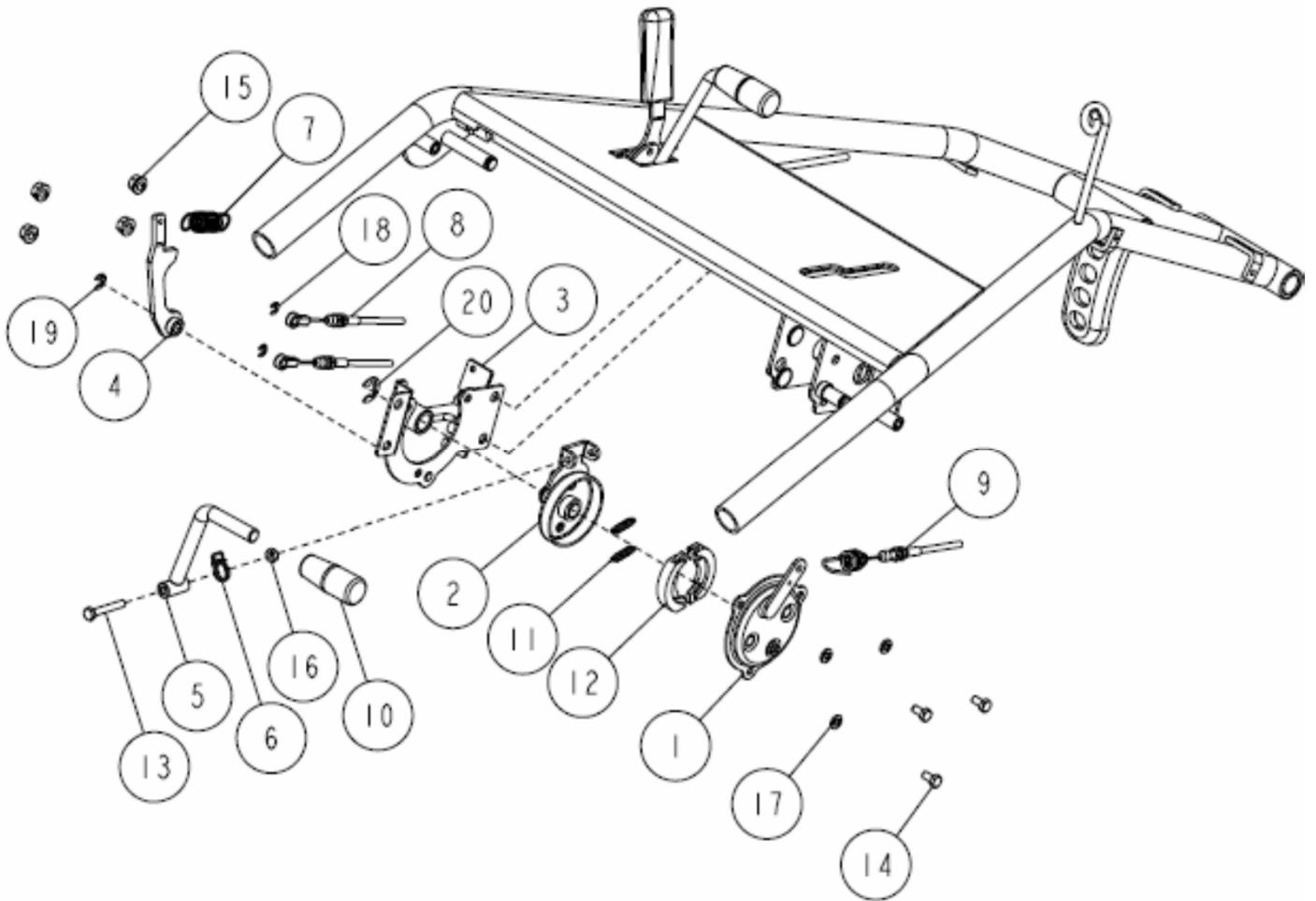
Ref.	Parts Number	Parts Name	Quantity	Remarks
1	80-1210-216-00	Stopper Pin	2	
2	80-1210-217-00	Stopper Spring	2	
3	80-1210-222-00	Handle Setting Collar	1	
4	80-1310-203-00	Turntable for Handle	1	
5	80-1310-215-00	Stopper Cap	2	
6	80-1310-228-00	Handle Fix Nut	2	
7	80-1321-245-00	Lever Arm	1	
8	80-1445-214-10	Stopper for Handle Up/Down	1	
9	80-1761-291-00	Lever Cap	1	
10	0225-11100	Lever	1	
11	0324-72100	Handle Up/Down, Right/Left Wire	2	
12	83-1210-133-00	Setting Bolt M12*160	1	
13	89-1111-060402	Hexagonal Bolt M6*40	1	
14	89-1211-100202	Mini Hexagonal Bolt M10*20	2	
15	89-1551-060002	Hexagonal U Nut M6	1	
16	89-1711-060002	Flat Washer 6	2	
17	89-1711-100002	Flat Washer 10*18*1.6	2	
18	89-1750-100002	Spring Washer 10	2	
19	89-1750-120002	Spring Washer 12	2	
20	89-2132-060002	Snap Pin 6 (with stopper)	2	
21	89-2521-000100	E Type Ring 10	1	

14/28 Handle 3/5



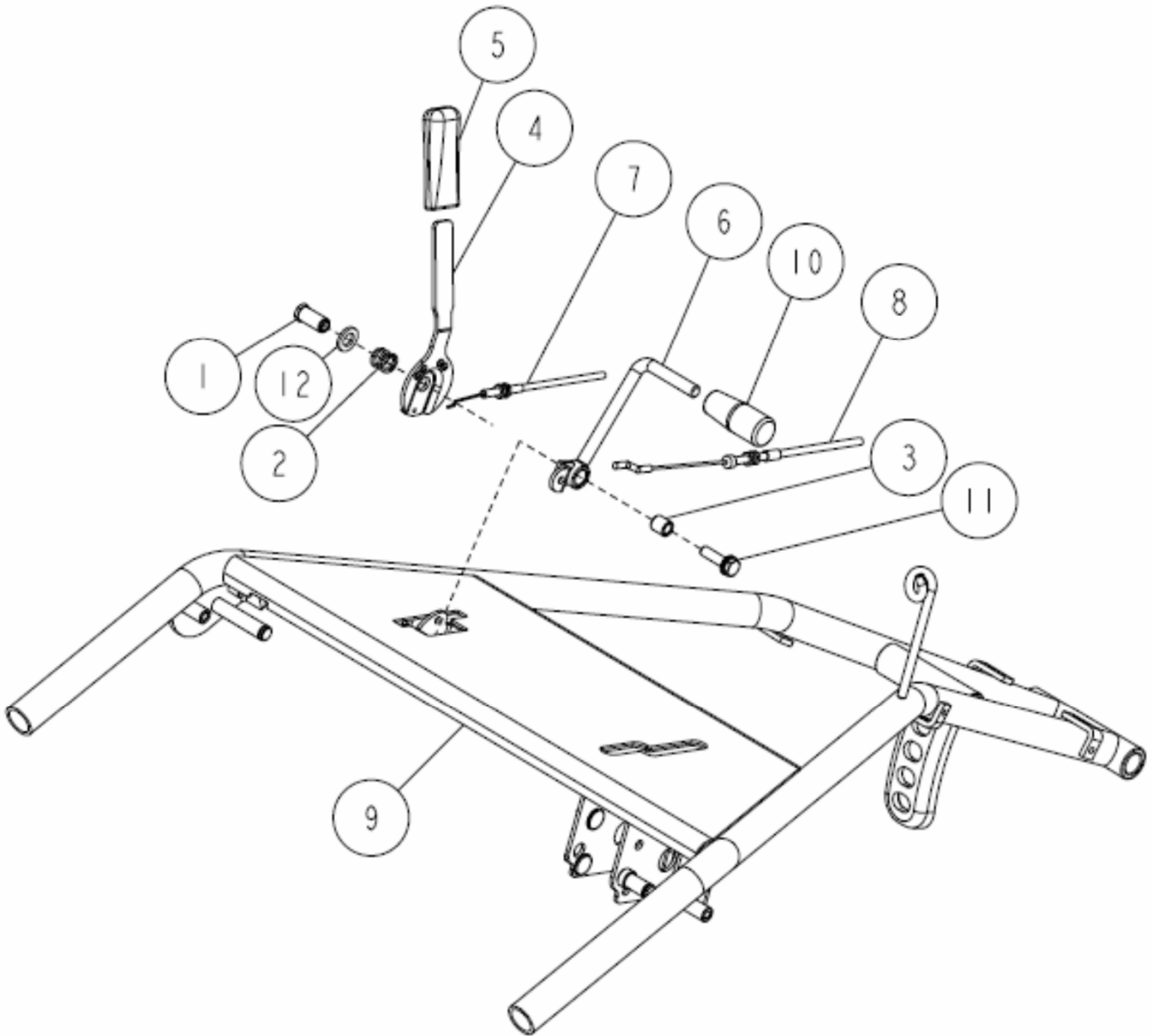
Ref.	Parts Number	Parts Name	Quantity	Remarks
1	80-1417-253-00	Stopper	1	
2	80-1417-255-00	Lever Grip (Red) 10	1	
3	80-1417-966-00	Clutch Spring	1	
4	0211-70410	Stopper Return Spring	1	
5	0305-70200	Lever Cap	1	
6	0320-10200	Wire Arm	1	
7	0320-10300	Knife Tension Lever	1	
8	0320-10400	Lock Lever	1	
9	0320-70200	Knife Wire Return Spring	1	
10	0320-70300	Spring for Lock Lever Return	1	
11	0320-70600	Knife Clutch Wire	1	
12	83-1565-328-00	Washer 12*25*2.3	1	
13	89-2521-000050	E Type Ring 5	1	
14	89-2521-000100	E Type Ring 10	2	

15/28 Handle 4/5



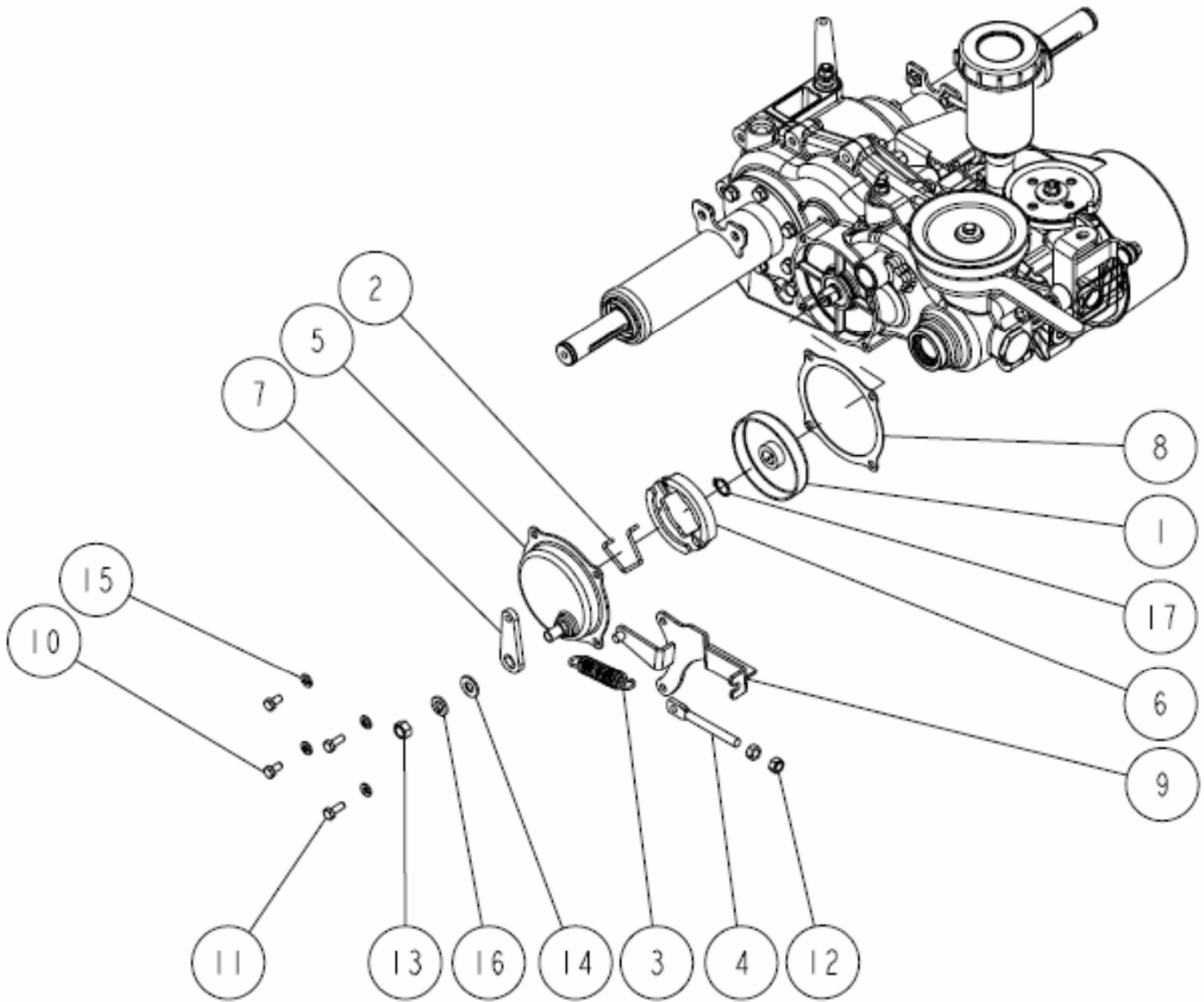
Ref.	Parts Number	Parts Name	Quantity	Remarks
1	80-1614-314-00	Brake Cover	1	
2	0225-10600	Change Drum	1	
3	0320-10500	Change Brake Stay CMP	1	
4	0320-10600	Change Return Arm	1	
5	0320-10700	Change Lever	1	
6	0320-70400	Change Lever Return Spring	1	
7	0320-70500	Change Return Spring	1	
8	0320-71200	Change Wire	2	
9	0320-71300	Change Brake Wire	1	
10	83-1711-426-00	Lever Grip 12	1	
11	85-1711-317-00	Shoe Return Spring	2	
12	85-1711-318-00	Brake Shoe Set	1	
13	89-1111-060402	Hexagonal Bolt M6*40	1	
14	89-1113-060122	Hexagonal Bolt (8T) M6*12	3	
15	89-1543-080003	Mini Hexagonal Nut (SW) M8	4	
16	89-1551-060002	Hexagonal U Nut M6	1	
17	89-1750-060002	Spring Washer 6	3	
18	89-2521-000050	E Type Ring 5	2	
19	89-2521-000070	E Type Ring 7	1	
20	89-2521-000120	E Type Ring 12	1	

16/28 Handle 5/5



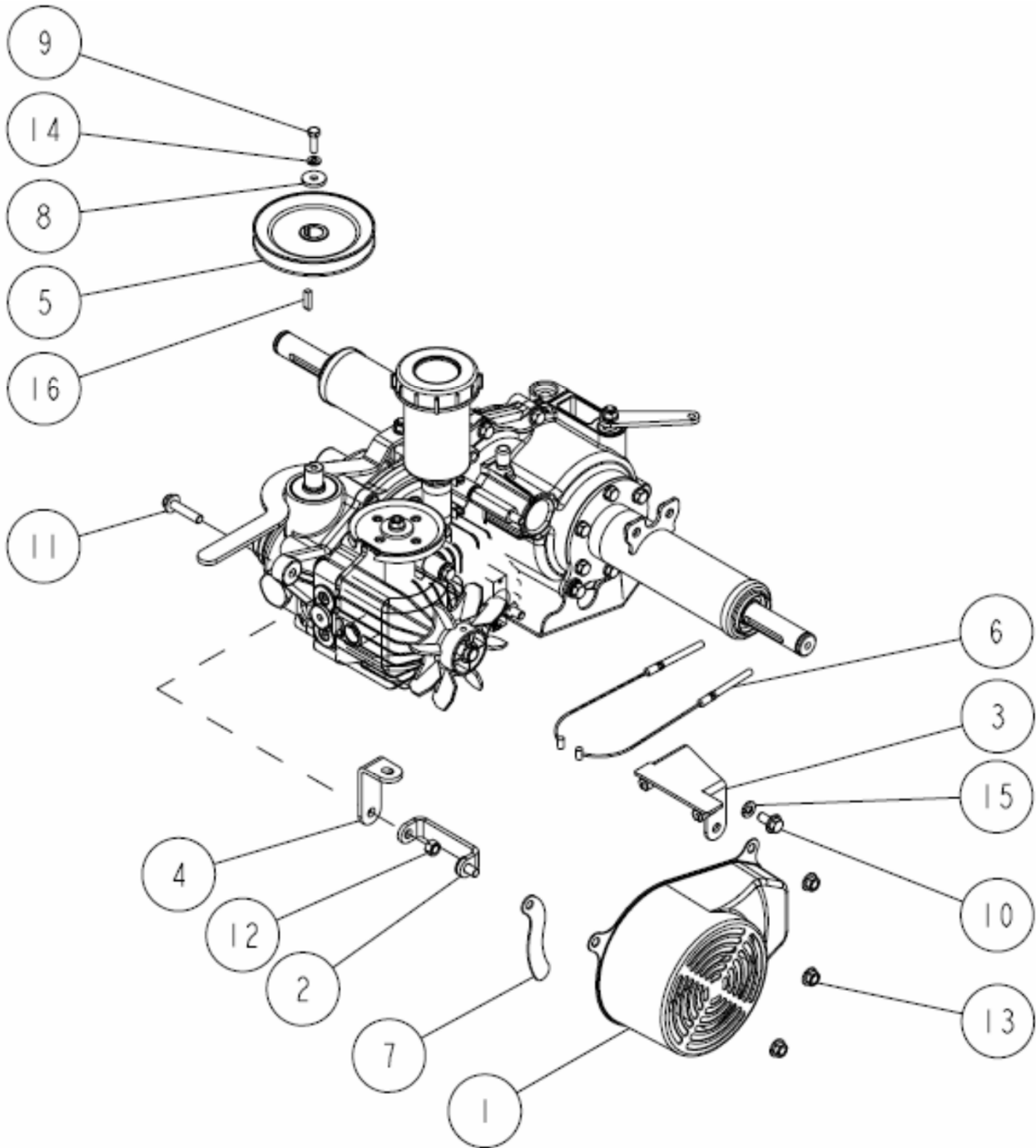
Ref.	Parts Number	Parts Name	Quantity	Remarks
12	89-1711-120003	Flat Washer 12	1	
11	89-1139-080302	Hexagonal Bolt (PWSW) M8*30	1	
10	83-1210-425-00	Lever Grip 10	1	
9	0324-10100	Handle CMP	1	
8	0320-71100	Defferential Lock Wire	1	
7	0320-70900	Throttle Wire	1	
6	0320-10800	Defferential Lock Lever	1	
5	80-1484-262-00	Arm Grip (Red)	1	
4	80-1437-261-00	Throttle Lever (GXV270)	1	
3	80-1020-270-00	Inner Collar	1	
2	80-1020-263-00	Control Lever Shaft Spring	1	
1	80-1020-262-00	Control Lever Shaft	1	

17/28 Transmission 1/10



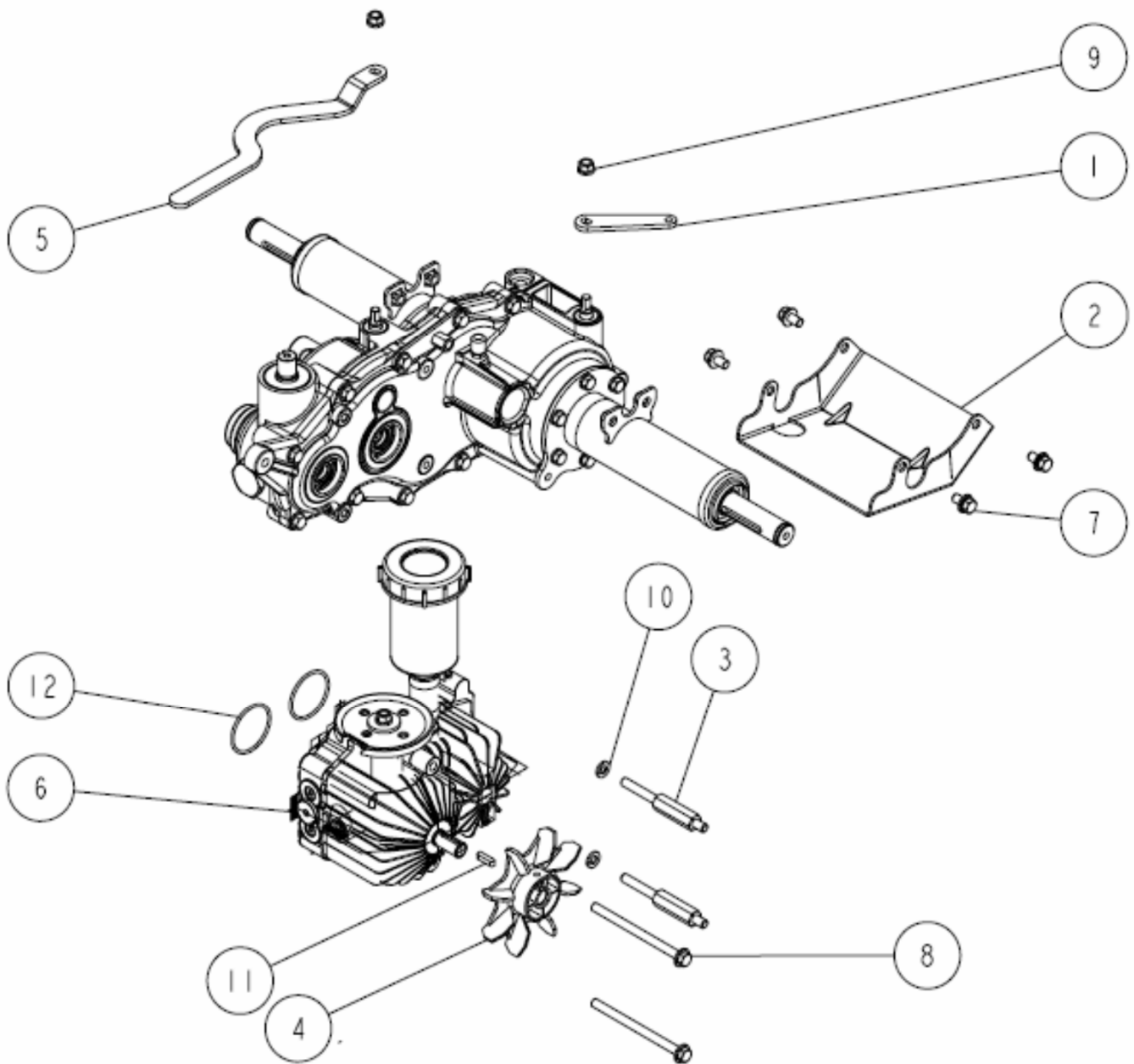
Ref.	Parts Number	Parts Name	Quantity	Remarks
1	80-1030-282-00	Brake Drum (PA-7)	1	
2	80-1030-285-00	Spring for Brake Shoe Return	1	
3	0201-52700	Tension Spring for Blade	1	
4	0207-72300	Change Brake Adjuster	1	
5	0207-73800	Brake Cap Assy	1	
6	0244-88100	Brake Shoe Set (PA-7)	1	
7	0294-70700	Brake Arm	1	
8	0308-00300	Brake Cover PK (PA-7)	1	
9	0320-02200	Brake Bracket CMP	1	
10	89-1113-060122	Hexagonal Bolt (8T) M6*12	2	
11	89-1113-060162	Hexagonal Bolt (8T) M6*16	2	
12	89-1611-080042	Mini Hexagonal Nut M8	2	
13	89-1611-100042	Mini Hexagonal Nut M10	1	
14	89-1712-100000	Flat Washer 10	1	
15	89-1750-060002	Spring Washer 6	4	
16	89-1750-100002	Spring Washer 10	1	
17	89-2511-000150	Snap Ring (S15)	1	

18/28 Transmission 2/10



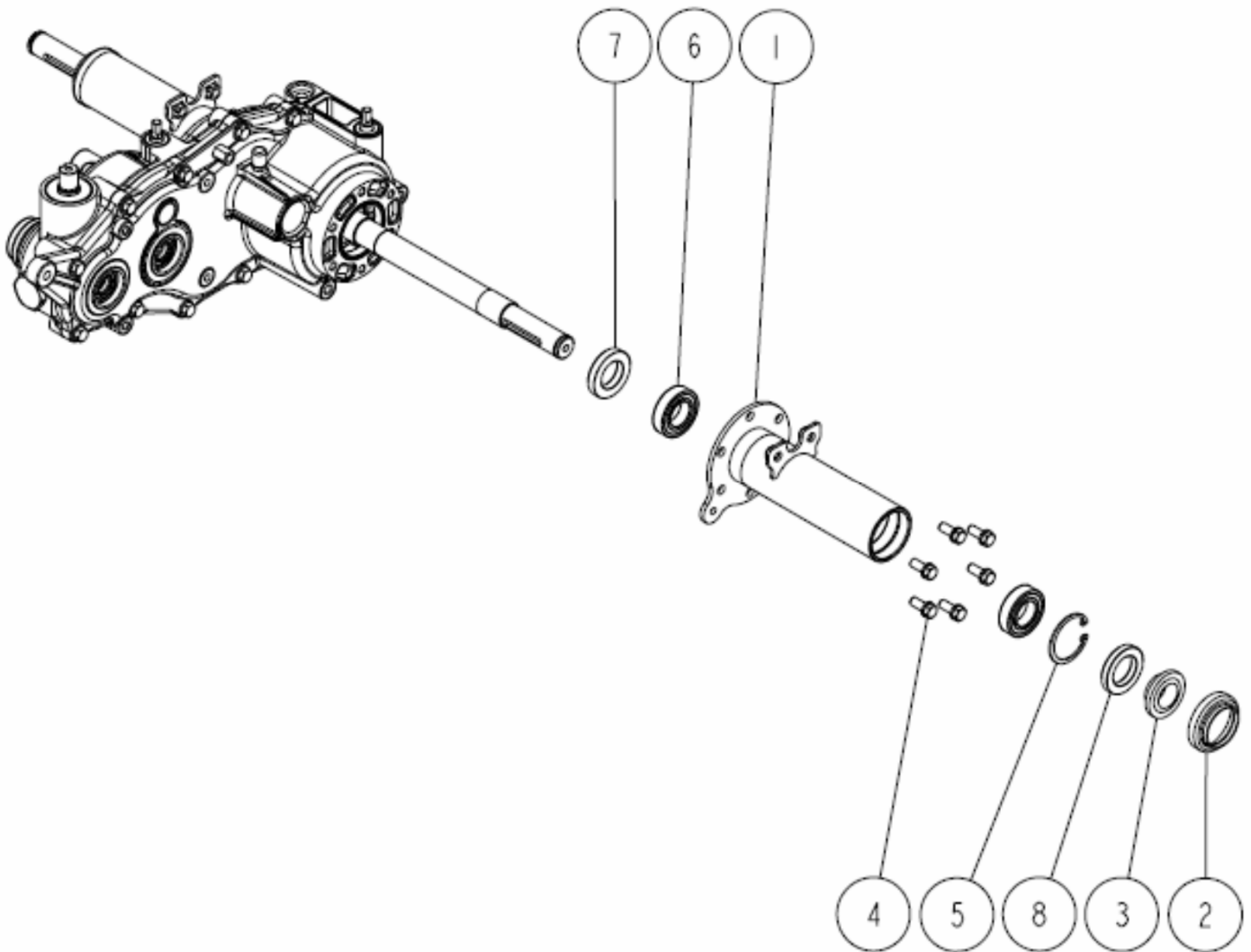
Ref.	Parts Number	Parts Name	Quantity	Remarks
1	0207-07200	Fan Cover CMP	1	
2	0207-07400	Fan Cover Setting CMP	1	
3	0320-01400	Receiver for Control Wire CMP	1	
4	0320-02300	Transmission Hunger Stay	1	
5	0320-40100	Transmission Pulley	1	
6	0320-71200	Change Wire	2	
7	0324-00100	Fan Cover (IN)	1	
8	83-1482-311-00	Washer 6.5*22*3.2	1	
9	89-1113-060202	Hexagonal Bolt (8T) M6*20	1	
10	89-1253-080162	Flange Mini Hexagonal Bolt (8T) M8*16	1	
11	89-1253-080352	Flange Mini Hexagonal Bolt (8T) M8*35	1	
12	89-1561-080002	Mini Hexagonal U Nut M8	1	
13	89-1631-080042	Flange Mini Hexagonal Nut M8	3	
14	89-1750-060002	Spring Washer 6	1	
15	89-1750-080002	Spring Washer 8	1	
16	89-2151-050200	Key 5*20 (half round)	1	

19/28 Transmission 3/10



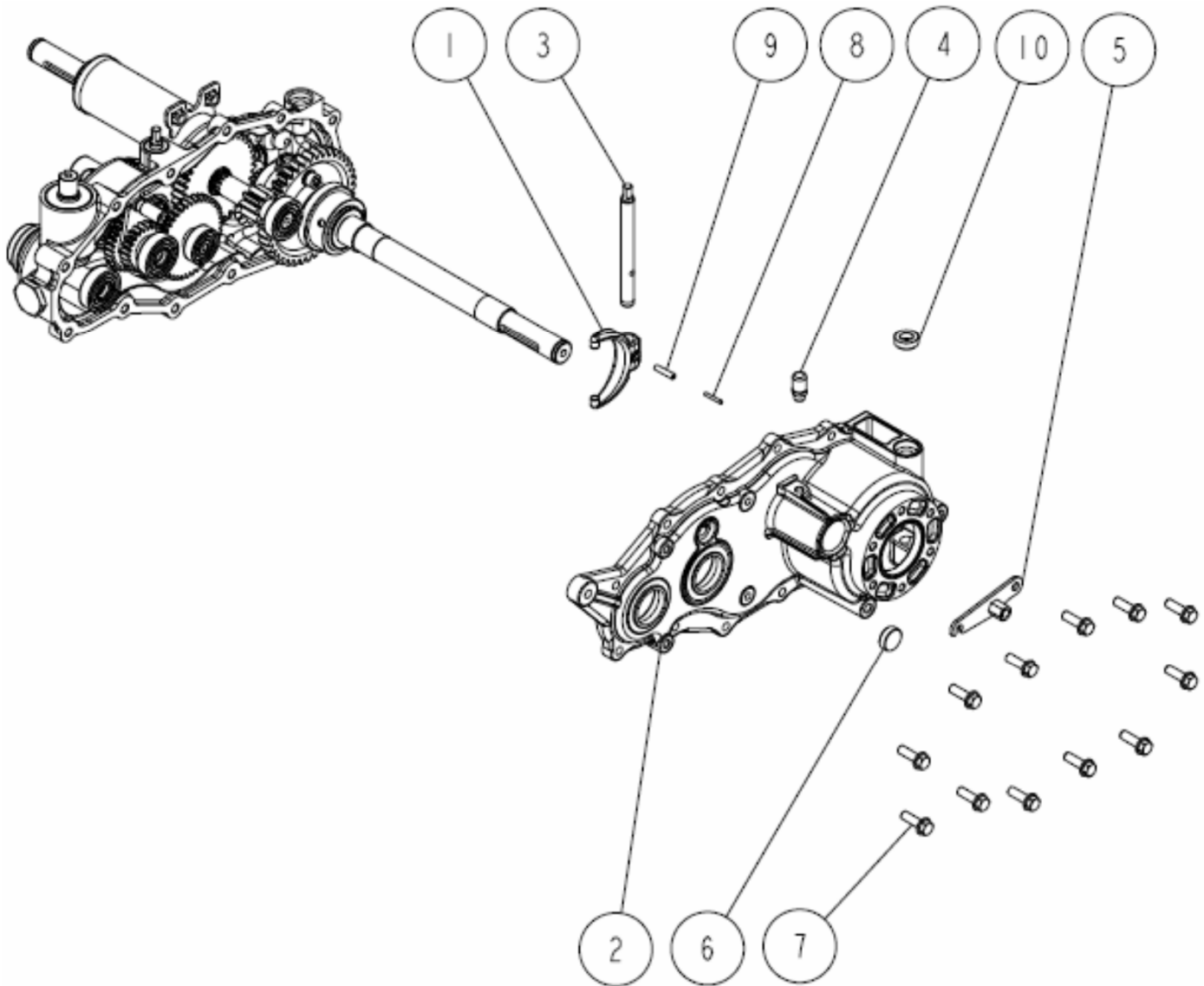
Ref.	Parts Number	Parts Name	Quantity	Remarks
1	80-1417-153-00	Differential Lock Arm	1	
2	0207-03100	Mission Guard CMP	1	
3	0207-07300	Double Spring Bolt	2	
4	0207-07500	Fan	1	
5	0320-01600	Change Arm	1	
6	0320-03000	HST Unit Assy	1	
7	89-1239-080162	Mini Hexagonal Bolt (PWSW) M8*16	4	
8	89-1251-081123	Flange Mini Hexagonal Bolt M8*112	2	
9	89-1543-080002	Mini Hexagonal Nut (SW) M8	2	
10	89-1750-080002	Spring Washer 8	2	
11	89-2150-050200	Key 5*20 (round)	1	
12	89-5222-045000	O Ring G45	2	

20/28 Transmission 4/10



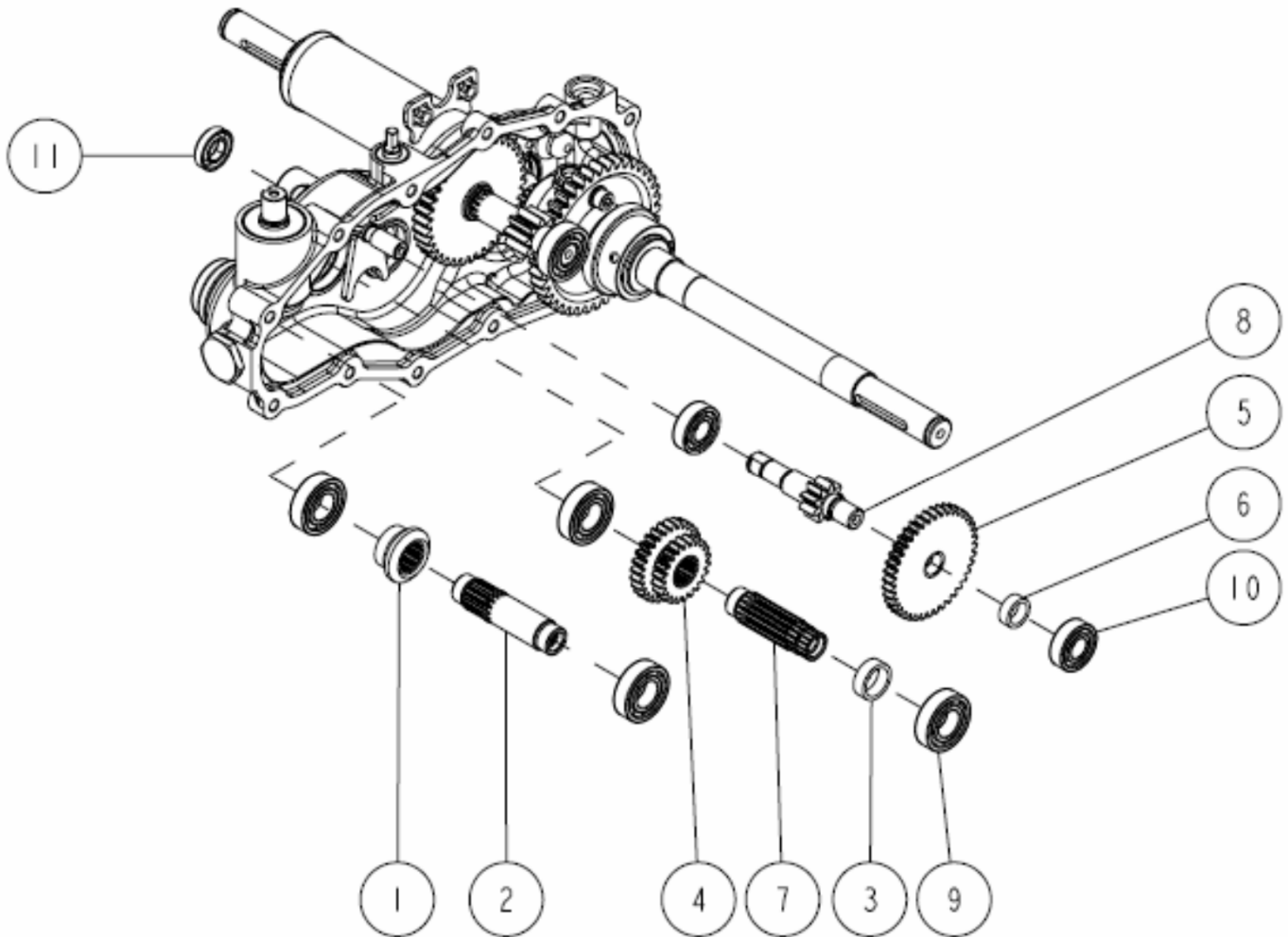
Ref.	Parts Number	Parts Name	Quantity	Remarks
	0244-08000	Oil Seal 20.47.15(with DP)		Include : 3,8
1	0320-00600	Axle BB Case CMP	1	
2	0320-00700	Dust Cover	1	
3	83-1415-663-00	Oil Seal DP 25.30.15	1	
4	89-1232-080202	Mini Hexagonal Bolt (SW) M8*20	6	
5	89-2512-000470	Snap Ring (R47)	1	
6	89-3115-060054	Bearing 6005 2RS	2	
7	89-5121-284708	Oil Seal UE 28.47.8	1	
8	89-5121-304707	Oil Seal UE 30.47.7	1	

21/28 Transmission 5/10



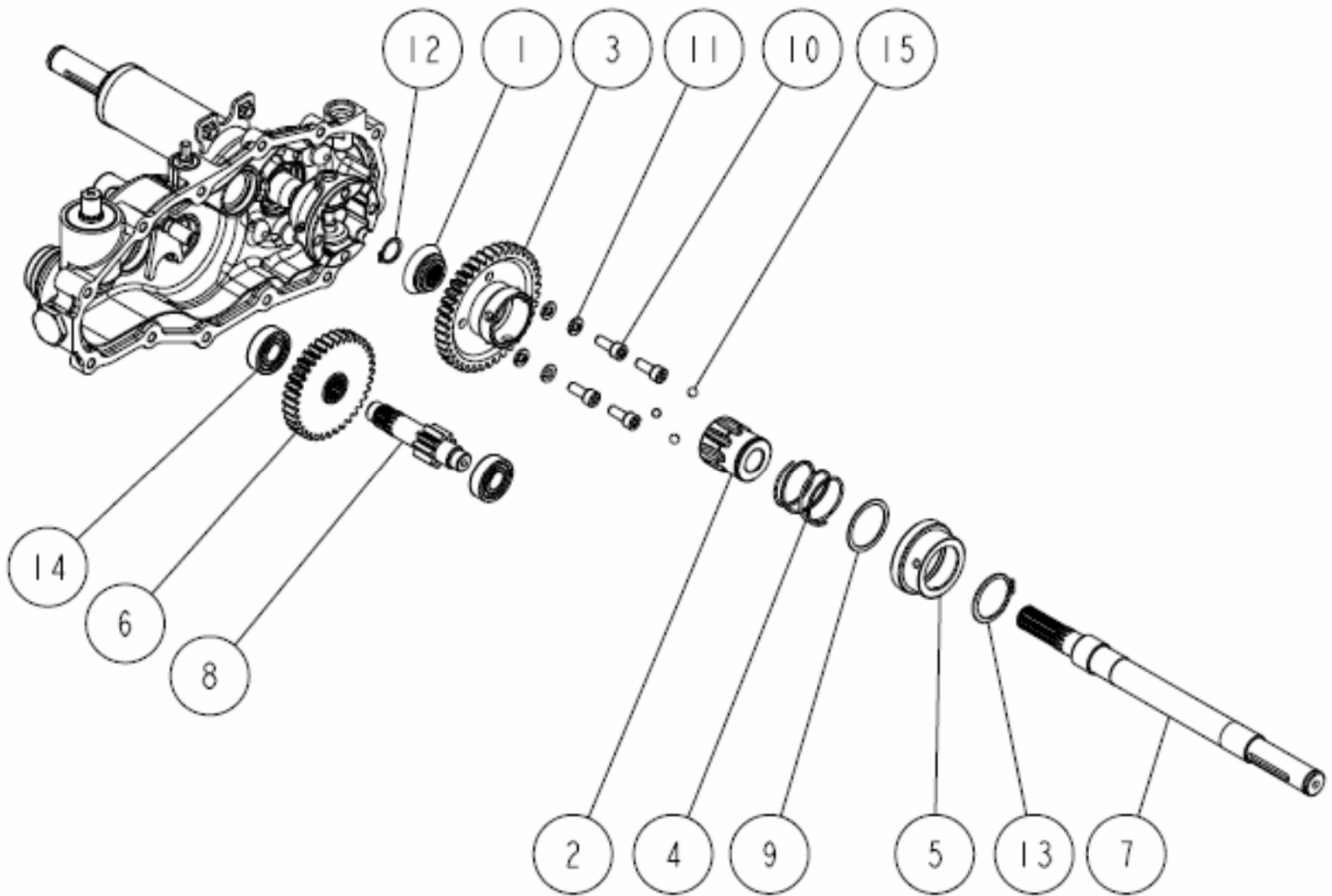
Ref.	Parts Number	Parts Name	Quantity	Remarks
1	80-1830-113-00	Differential Lock Fork	1	
2	0207-00200	Transmission Case(R)	1	
3	0207-01800	Differential Lock Fork Shaft	1	
4	0207-06100	Air Bleezer	1	
5	0320-01500	Receiver for Wire Stay CMP	1	
6	83-1415-671-00	Blind Cover 22	1	
7	83-1482-143-00	Tapping Bolt M8*25	12	
8	89-2111-030020	Spring Pin 3*20	1	
9	89-2111-050022	Spring Pin 5*22	1	
10	89-5121-122207	Oil Seal UE 12.22.7	1	

22/28 Transmission 6/10



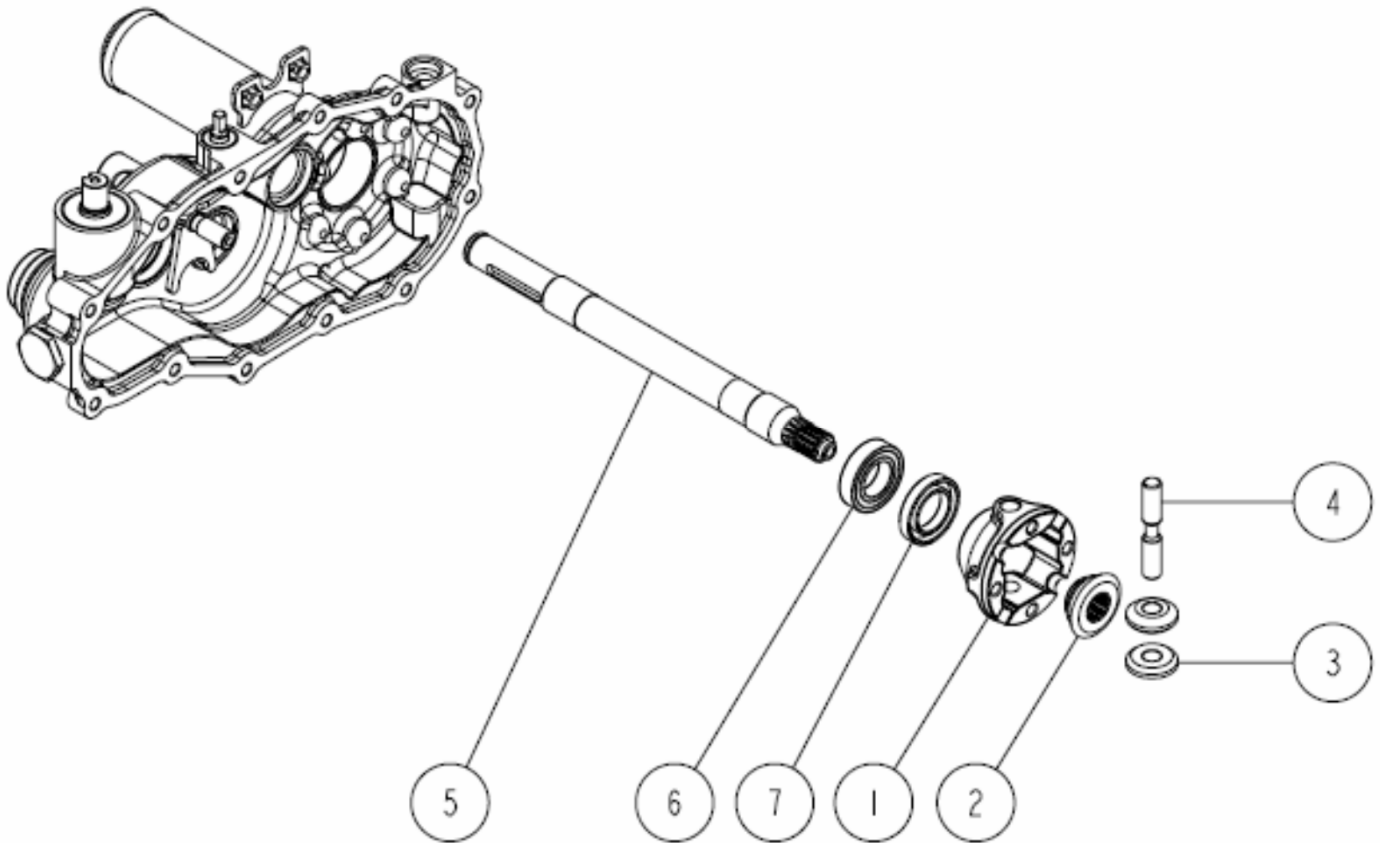
Ref.	Parts Number	Parts Name	Quantity	Remarks
1	0207-00500	20T Spiral Mita Gear(R)	1	
2	0207-00600	B Axle	1	
3	0207-00800	C Axle Collar 9	1	
4	0207-00910	Shift Gear 22-28	1	
5	0207-01210	Brake Shaft 40T Gear	1	
6	0207-01500	Brake Shaft Collar 8	1	
7	0320-00300	C Axle	1	
8	0320-00500	Brake Axle	1	
9	89-3111-060044	Bearing 6004	4	
10	89-3111-062024	Bearing 6202	2	
11	89-5125-153007	Oil Seal UE 15.30.07F	1	

23/28 Transmission 7/10



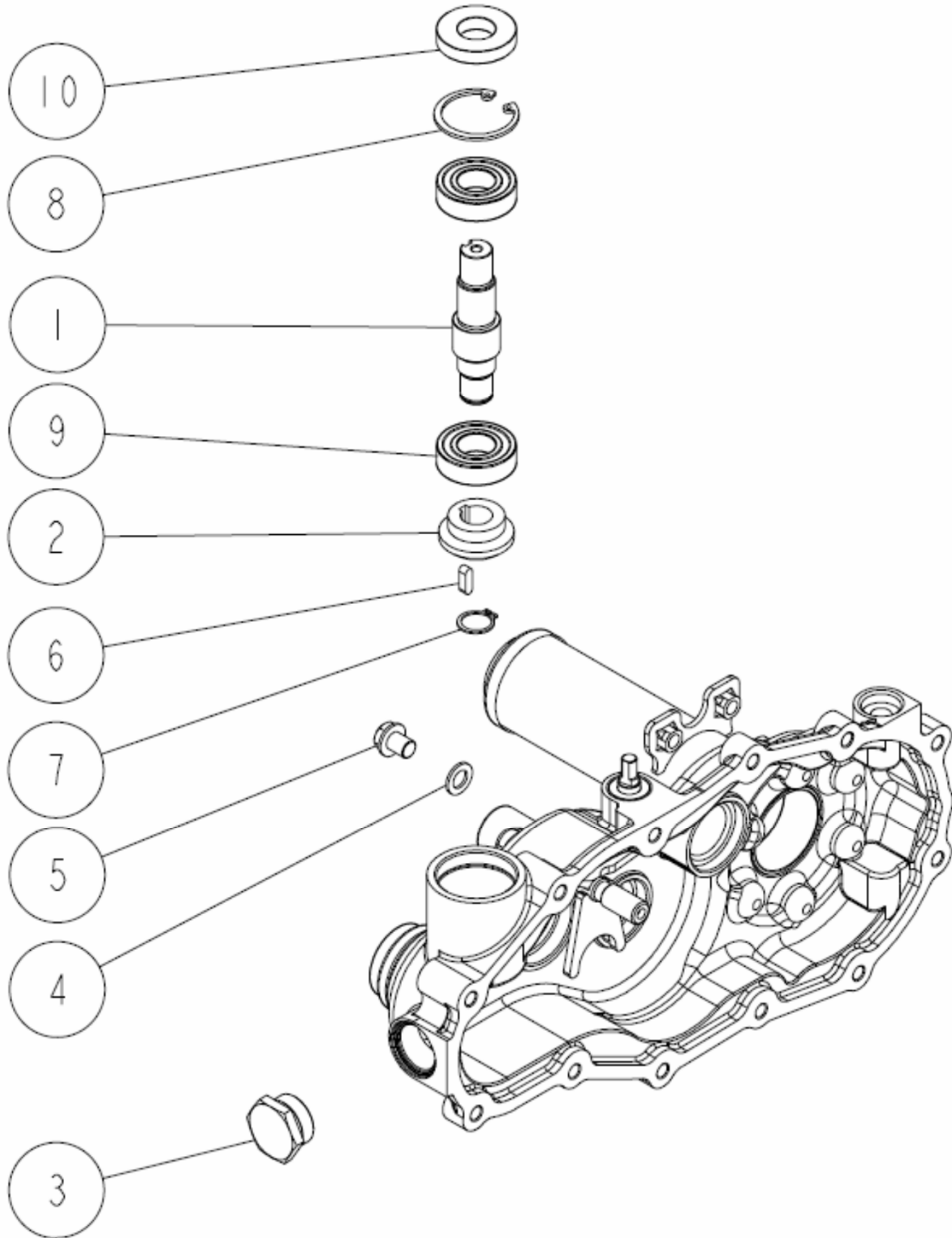
Ref.	Parts Number	Parts Name	Quantity	Remarks
1	80-1260-152-00	Differential Gear 14T	1	
2	80-1417-143-10	Differential Lock Shaft	1	
3	80-1417-148-00	Axle 40T Gear	1	
4	80-1417-162-00	Differential Lock Spring	1	
5	80-1425-143-00	Differential Lock Cone	1	
6	0207-01400	D Axle 37T Gear	1	
7	0220-01100	Axle (L) CMP	1	
8	0320-00400	D Axle	1	
9	83-1830-382-00	Thrust Washer 40*48*1.0	1	
10	83-1981-149-00	Hexagonal Bolt with Hole M8*20	4	
11	89-1750-080002	Spring Washer 8	4	
12	89-2511-000200	Snap Ring (S20)	1	
13	89-2511-000400	Snap Ring (S40)	1	
14	89-3111-062034	Bearing 6203	2	
15	89-3410-075000	Steel Ball 7.5	3	

24/28 Transmission 8/10



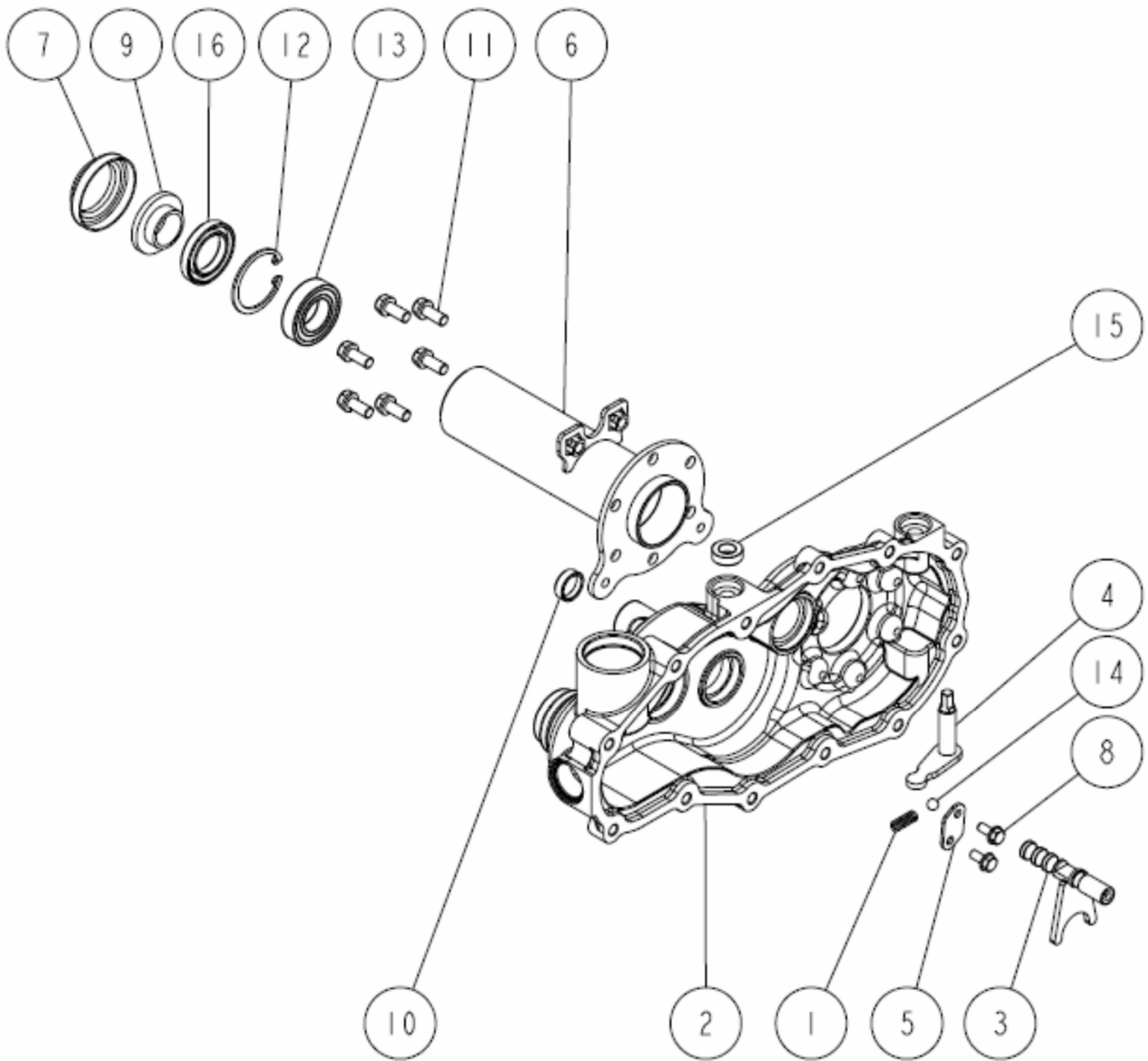
Ref.	Parts Number	Parts Name	Quantity	Remarks
1	80-1260-151-00	Differential Lock Case	1	
2	80-1260-152-00	Differential Gear 14T	1	
3	80-1260-153-00	Pinion 10T Gear	2	
4	80-1260-155-10	Differential Pinion Shaft	1	
5	0220-01200	Axle (R) CMP	1	
6	89-3115-060054	Bearing 6005 2RS	1	
7	89-5121-284708	Oil Seal UE 28.47.8	1	

25/28 Transmission 9/10



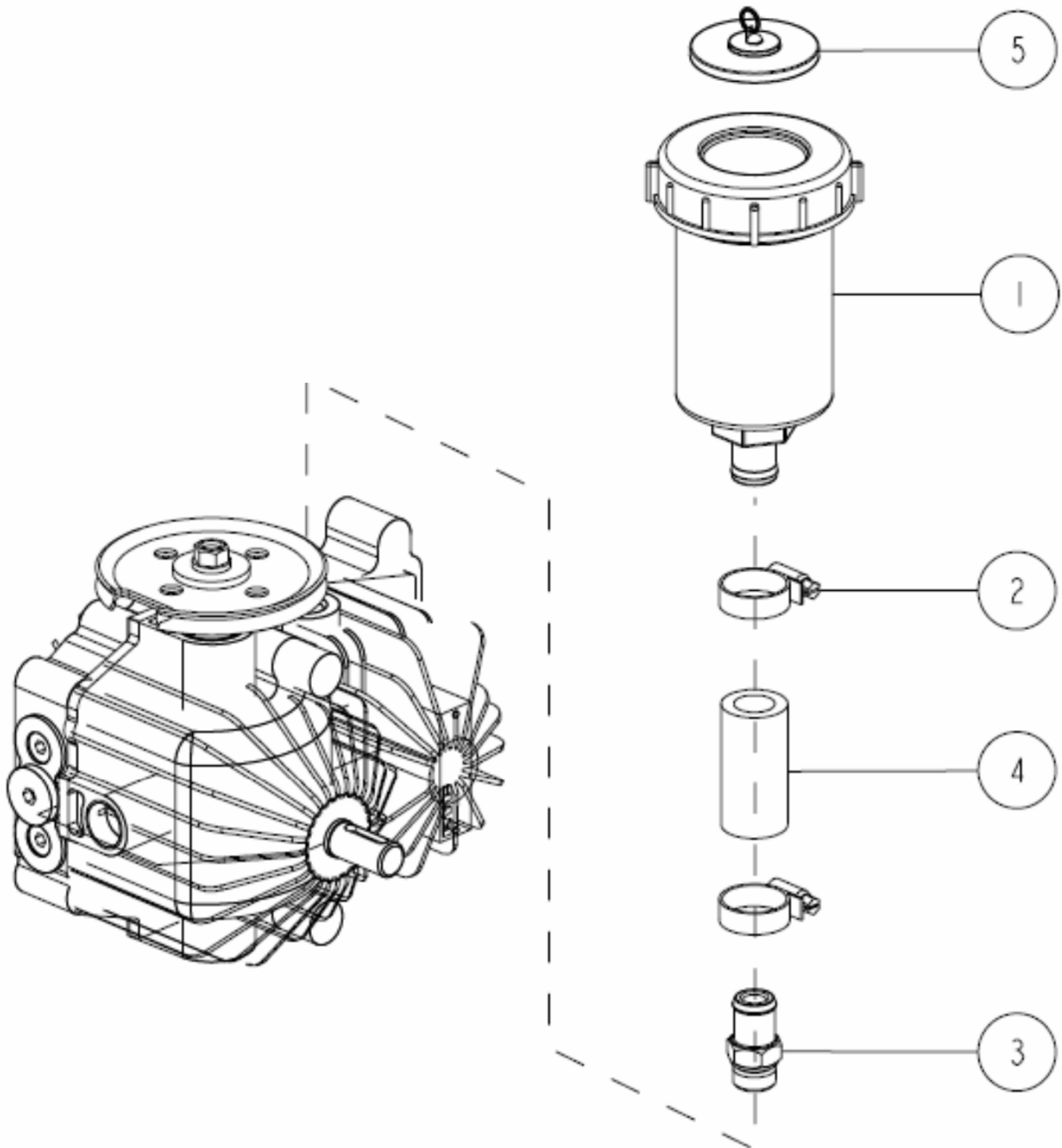
Ref.	Parts Number	Parts Name	Quantity	Remarks
1	0207-00300	A Axle	1	
2	0207-00400	20T Spiral Mita Gear(L)	1	
3	0289-01000	Oil Plug Assy (with O Ring)	1	
4	83-1020-349-00	Copper Packing 10.5*18*1.6	1	
5	89-1252-100122	Flange Mini Hexagonal Bolt M10*12 (slender)	1	
6	89-2150-050160	Key 5*16 (round)	1	
7	89-2511-000170	Snap Ring (S17)	1	
8	89-2512-000420	Snap Ring (R42)	1	
9	89-3115-060044	Bearing 6004 2RS	2	
10	89-5121-204208	Oil Seal UE 20.42.8	1	

26/28 Transmission 10/10



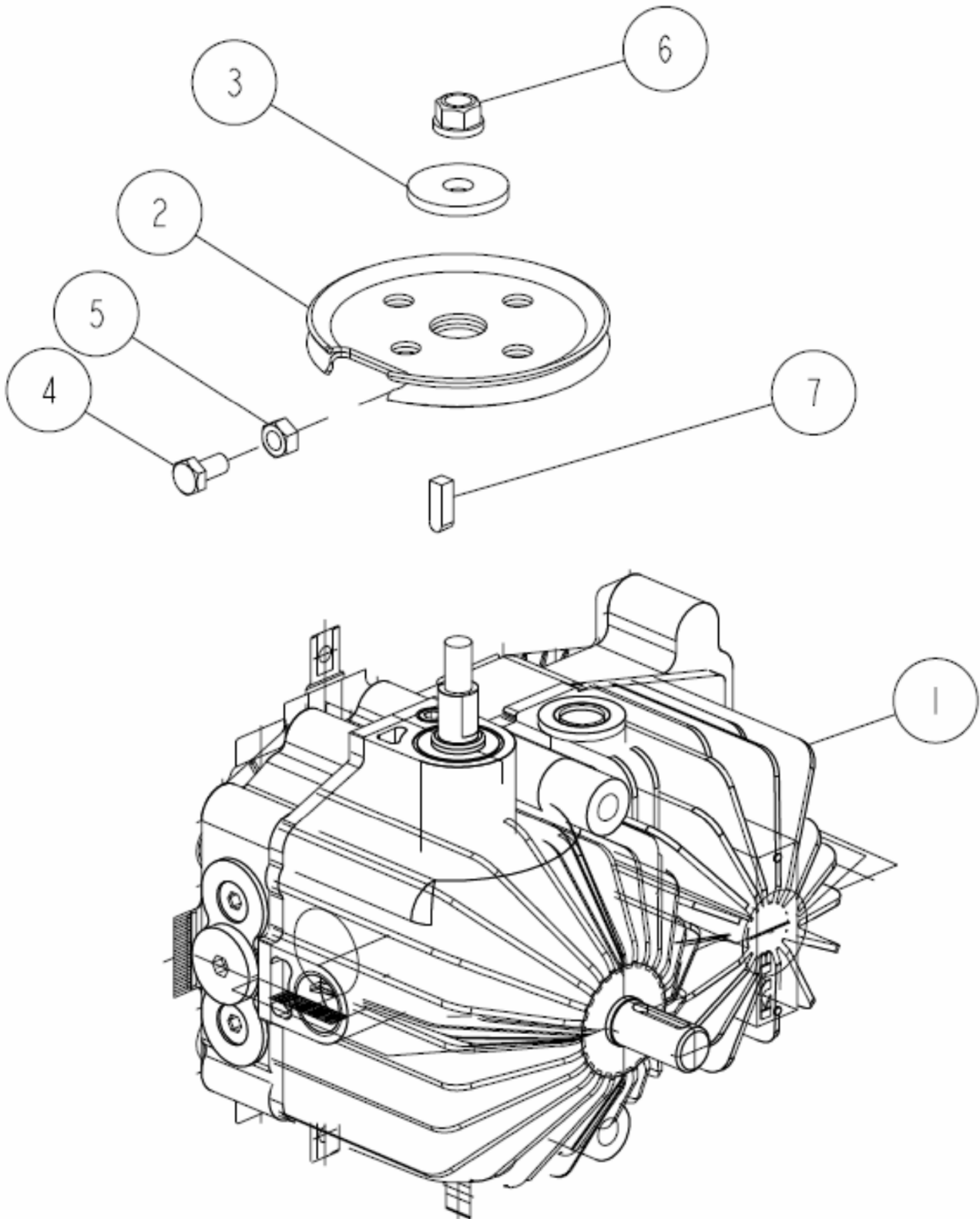
Ref.	Parts Number	Parts Name	Quantity	Remarks
	0244-08000	Oil Seal 20.47.15(with DP)		Include : 9,16
1	80-1310-138-00	Spring 1.4	1	
2	0207-00100	Transmission Case(L)	1	
3	0207-01600	Shift Fork Shaft CMP	1	
4	0207-01700	Swing Arm CMP	1	
5	0207-01900	Shift Spring Holder	1	
6	0320-00600	Axle BB Case CMP	1	
7	0320-00700	Dust Cover	1	
8	83-1020-148-00	Tapping Bolt M6*14	2	
9	83-1415-663-00	Oil Seal DP 25.30.15	1	
10	83-1415-671-00	Blind Cover 22	1	
11	89-1232-080202	Mini Hexagonal Bolt (SW) M8*20	6	
12	89-2512-000470	Snap Ring (R47)	1	
13	89-3115-060054	Bearing 6005 2RS	1	
14	89-3410-080000	Steel Ball 8.0	1	
15	89-5121-122207	Oil Seal UE 12.22.7	1	
16	89-5121-304707	Oil Seal UE 30.47.7	1	

27/28 HST Unit 1/2



Ref.	Parts Number	Parts Name	Quantity	Remarks
1	0207-07620	Oil Tank	1	
2	0312-74400	Hose Band 16-25	2	
3	0320-01200	Joint	1	
4	0320-01300	HST Hose 52	1	
5	0322-71600	Moisture Adsorption Sheet	1	

28/28 HST Unit 2/2



Ref.	Parts Number	Parts Name	Quantity	Remarks
1	0207-07110	HST Unit	1	
2	0320-01100	Control Arm CMP	1	
3	83-1415-312-00	Washer 8*30*3.2	1	
4	89-1113-060122	Hexagonal Bolt (8T) M6*12	1	
5	89-1511-060042	Hexagonal Nut M6	1	
6	89-1543-080002	Mini Hexagonal Nut (SW) M8	1	
7	89-2151-050160	Key 5*16 (half round)	1	